



Suspect Water Pollution in One of Our Parks?

- 1.) Document the date, time, and location
- 2.) If it is safe, take some pictures
- 3.) Call the Water Quality Pollution Hotline:

(301) 495-3582

What Types of Concerns Should I Report?

Call the Water Quality Concerns Hotline if you see the following on Parkland:

Aquatic Organism Mortality

- Fish and amphibians (e.g., frogs and salamanders) are good indicators of water quality. If you see multiple dead aquatic organisms in a concentrated area and suspect the cause may be from pollution, report this.

Illicit Discharges

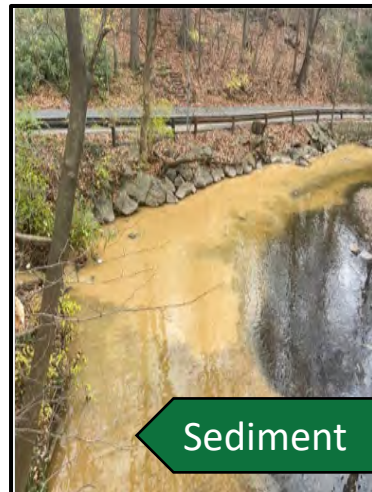
- Report suspected discharges of sewage, detergents, oil or auto fluids, concrete or paint, pesticides and fertilizers, hazardous waste, pool water or chlorine, cooking grease, household waste, and grey water.
- Use your sense of **smell** to help detect illicit discharges. If you smell gas, leave the area immediately and call 911 and Washington Gas at (703) 750-1400.

Spills and Leaks

- Report any accidental spills or leaks that have potential to enter a nearby storm drain or stream.
- For sewage leaks and water main break concerns, contact WSSC Emergency Services directly at (301) 206-4002.

Discolored Water

- Colorful substances in water can indicate the presence of pollution. Report these:
 - **Brown** water is an indicator of excess sediment and could mean there is a watermain break nearby.
 - **White** water is an indicator of concrete wash, paint, or other construction material illegally washed down the storm drain.
 - **Bright green** or blue-green water can be an indicator of a harmful algal bloom.



Sediment



Paint



Algal Bloom

Everyone has a role in preventing pollution and protecting our waterways!



What Not to Report: Pollution “Look-A-Likes”

Iron-Oxidizing Bacteria

- Signs of harmless iron-oxidizing bacteria include “fluffy-looking” flocculant that is orange or rust colored and may be accompanied by an oily-looking sheen. You do **not** need to report this.
- **But how do I determine if a sheen is oil or harmless bacteria?** Drop a pebble or run a stick through it. A bacterial sheen will break apart and stay separated. An oil sheen swirls and reforms; report this.

Filamentous Algae

- Filamentous algae has hairlike strands that grow towards the water surface.
- Moderate amounts of filamentous algae are not a concern and are a part of the stream ecology. You do not need to report this.



Filamentous
Algae



Iron-oxidizing bacteria



Iron-oxidizing bacteria

Do you have a general concern unrelated to water quality?

You can call the Parks' Customer Service Line:

(301) 495-2595

Who do I call when I have a concern off Parkland?

You can report the pollution concerns to Montgomery County Department of Environmental Protection by calling 311 or by submitting your concern on their website.

www.montgomerycountymd.gov/dep/contact.html

You can also report concerns to Maryland Department of the Environment (MDE) through their Emergency Numbers for Pollution Problems or by submitting your concern on their website:

www.mde.maryland.gov/pages/reportpollution.aspx

