



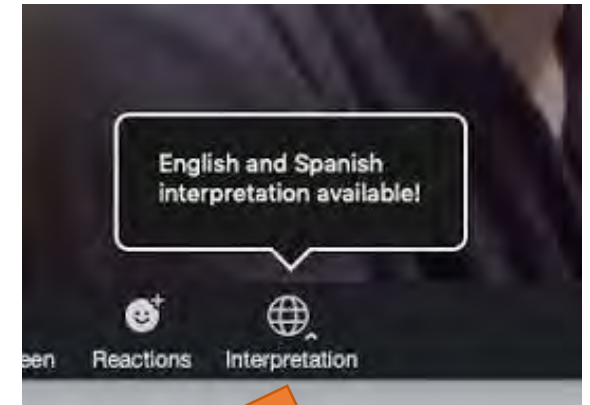
Long Branch – Garland Neighborhood Park Improvement Project

COMMUNITY MEETING

September 21, 2021



If you want to listen in **Spanish**, click on the interpretation icon at the bottom of your screen.



MEETING LOGISTICS:

This presentation is being recorded and will be available to review after the meeting at :

<http://mcp-events.org/longbranchgarlandmtg>

And at the project web site:

<http://mcp-events.org/longbranchgarlandproject>

PROJECT
INFORMATION:

PROJECT WEBSITE AND
OPEN TOWN HALL SURVEY:

<http://mcp-events.org/longbranchgarlandproject>

PROJECT MANAGER:

Christie Ciabotti

Christie.Ciabotti@MontgomeryParks.org

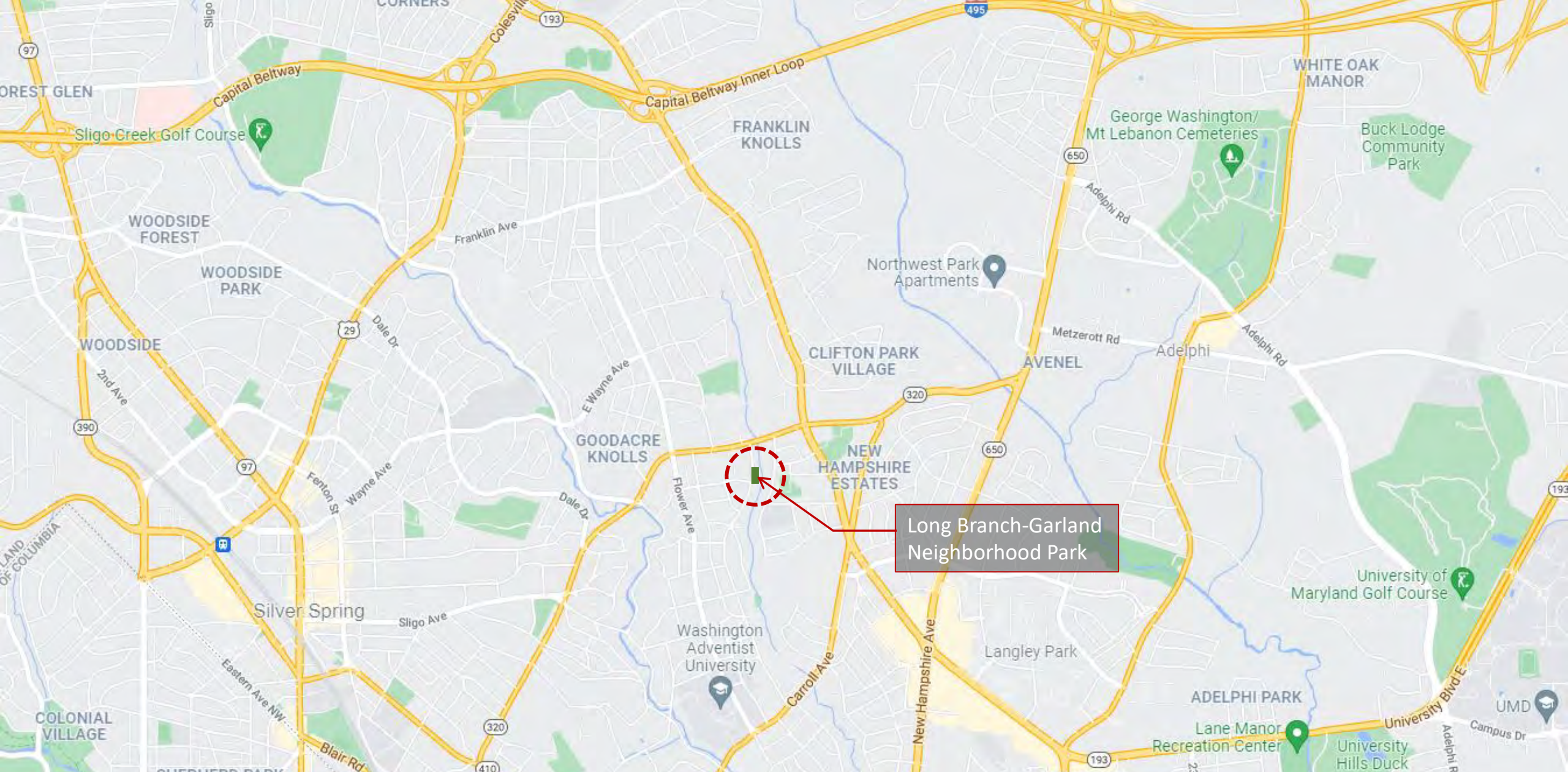
301-650-4365

AGENDA:

1. Project Introduction
2. Planning Guidance
3. Existing Conditions
4. Park Program and Concept Plans
5. Next Steps
6. Discussion

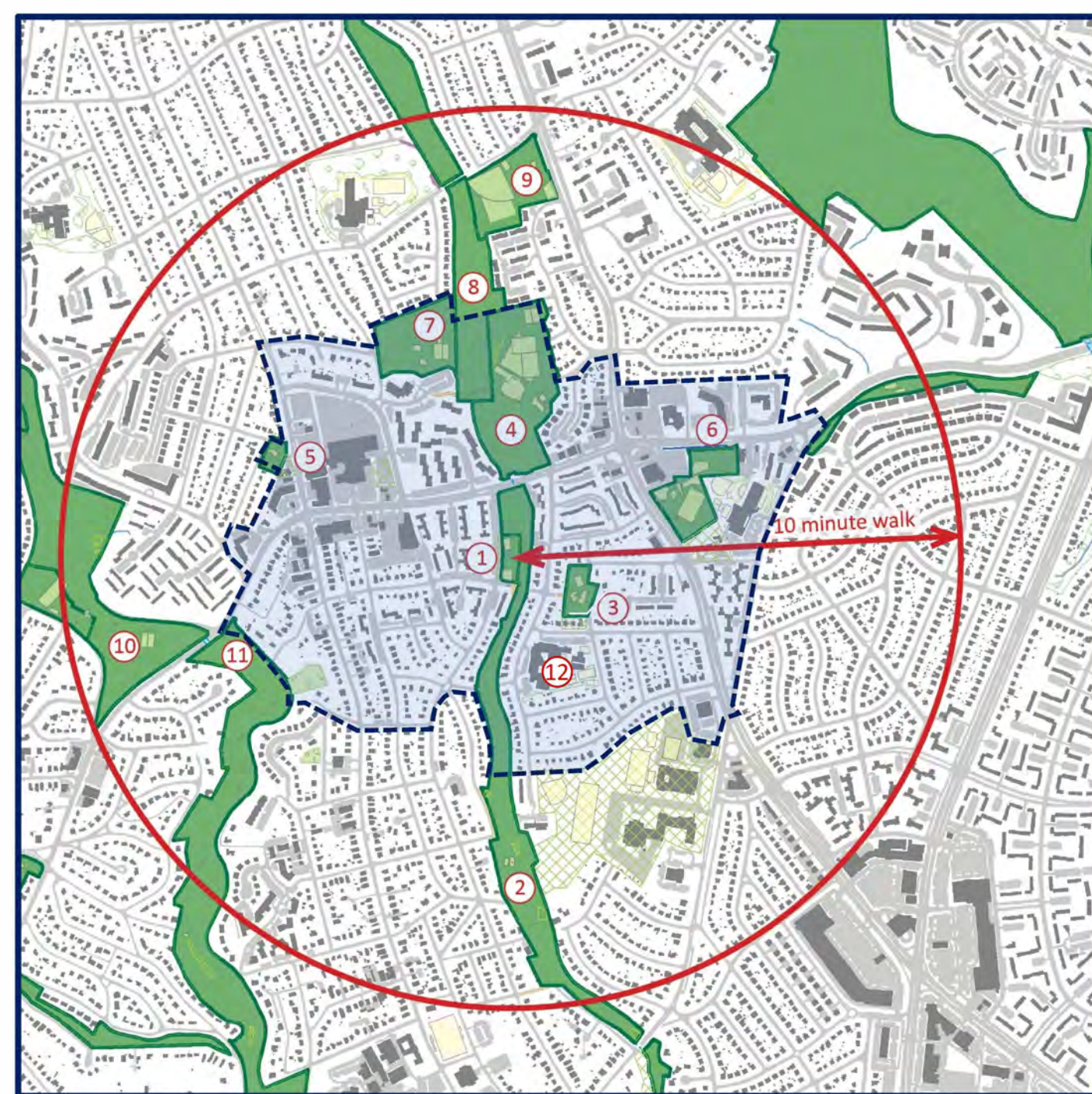


PROJECT INTRODUCTION



Long Branch-Garland
Neighborhood Park

PROJECT LOCATION



1. Long Branch-Garland Neighborhood Park
2. Long Branch SVU 1
3. Seek Lane Neighborhood Park
4. Long Branch Local Park
5. Long Branch Town Center and Flower Ave. Urban Park
6. New Hampshire Estates Local Park
7. Long Branch Arliss Neighborhood Park
8. Long Branch SVU 2
9. Long Branch Wayne Local Park
10. Sligo Creek SVU 2
11. Sligo Creek SVU 1
12. Rolling Terrace Elementary School

PROJECT CONTEXT



1. Long Branch Trail
2. Rolling Terrace Elementary
3. Planned purple line and purple line stations

KEY NEIGHBORHOOD CONNECTIONS

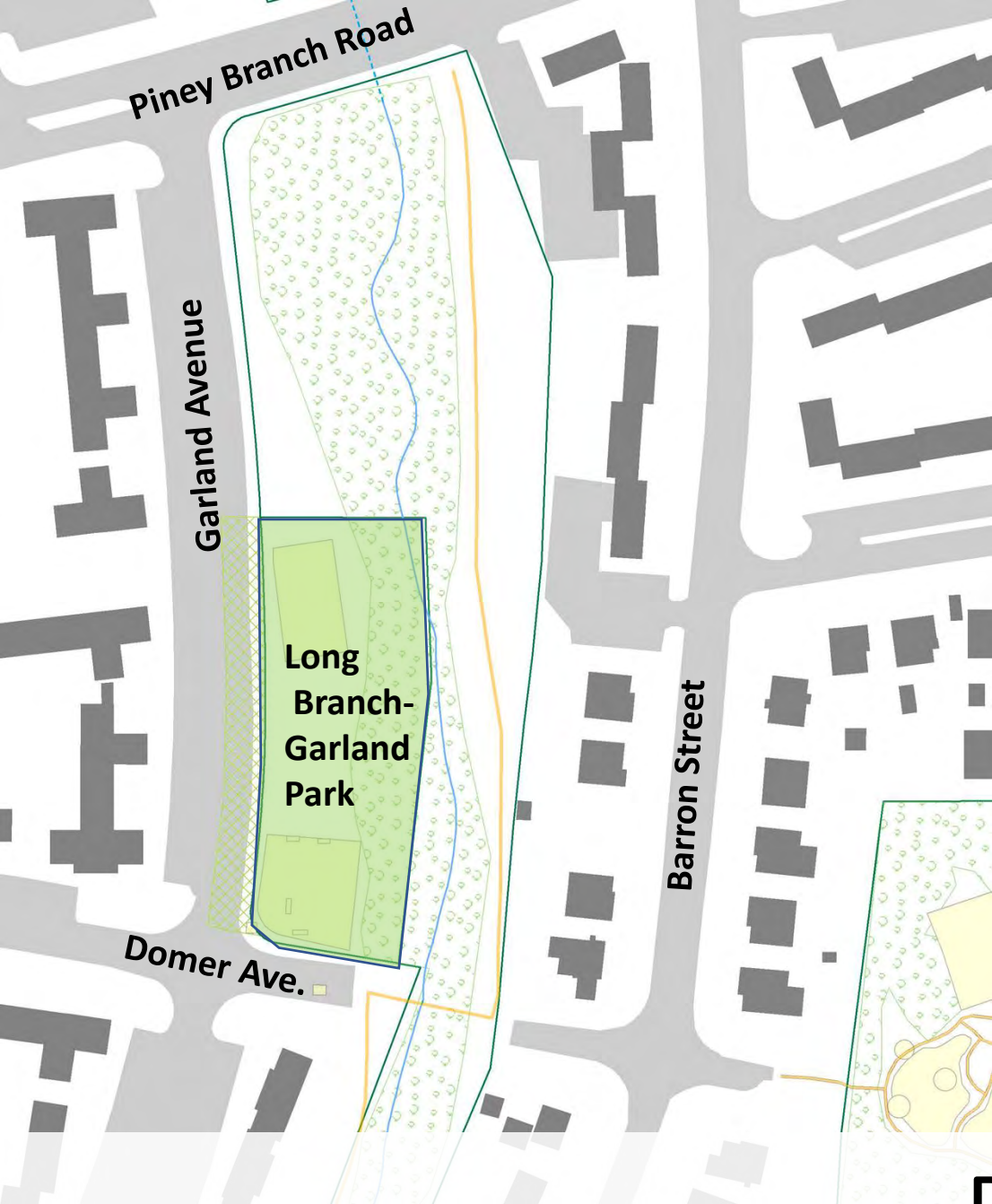


long branch

sector plan • november 2013 approved and adopted



PLANNING GUIDANCE



LONG BRANCH SECTOR PLAN RECOMMENDATIONS:

1. **Widen the Domer Avenue Bridge**
2. **Establish a loop trail** along both sides of the stream valley on Garland Ave, the Domer Ave, Barron Street, and Piney Branch Road.

PARK-SPECIFIC RECOMMENDATIONS:

1. **Add court soccer**
2. **Add multi-generational play elements**
3. **Incorporate public art**
4. Shared-use path along Garland Ave.
5. Narrow Garland to expand parkland

PLANNING RECOMMENDATIONS



Barron Street

Long Branch Stream Valley

Pinney Branch Road

Domer Avenue

Picnic Area

Basketball Court

Playground

Garland Avenue

EXISTING CONDITIONS



DOMER AVE EXISTING CONDITIONS



BRIDGE EXISTING CONDITIONS



EXISTING CONDITIONS PLAYGROUND



EXISTING CONDITIONS LAWN AND COURT



DESIGN PRIORITIES AND CONCEPT PLAN



- Expand Park Across Domer Ave.
- New Trailhead Near Bridge



- New, Wider Bridge

DESIGN PRIORITIES – Domer Ave. and Bridge



- Upgrade Playground



- Improve Existing Park Elements
- Add New Amenities
- Improve Accessibility

DESIGN PRIORITIES –Playground and Park



LONG BRANCH-GARLAND CONCEPT PLAN



COMMUNITY LAWN



TRAILHEAD



SPORT COURT and LARGE LAWN



PLAYGROUND

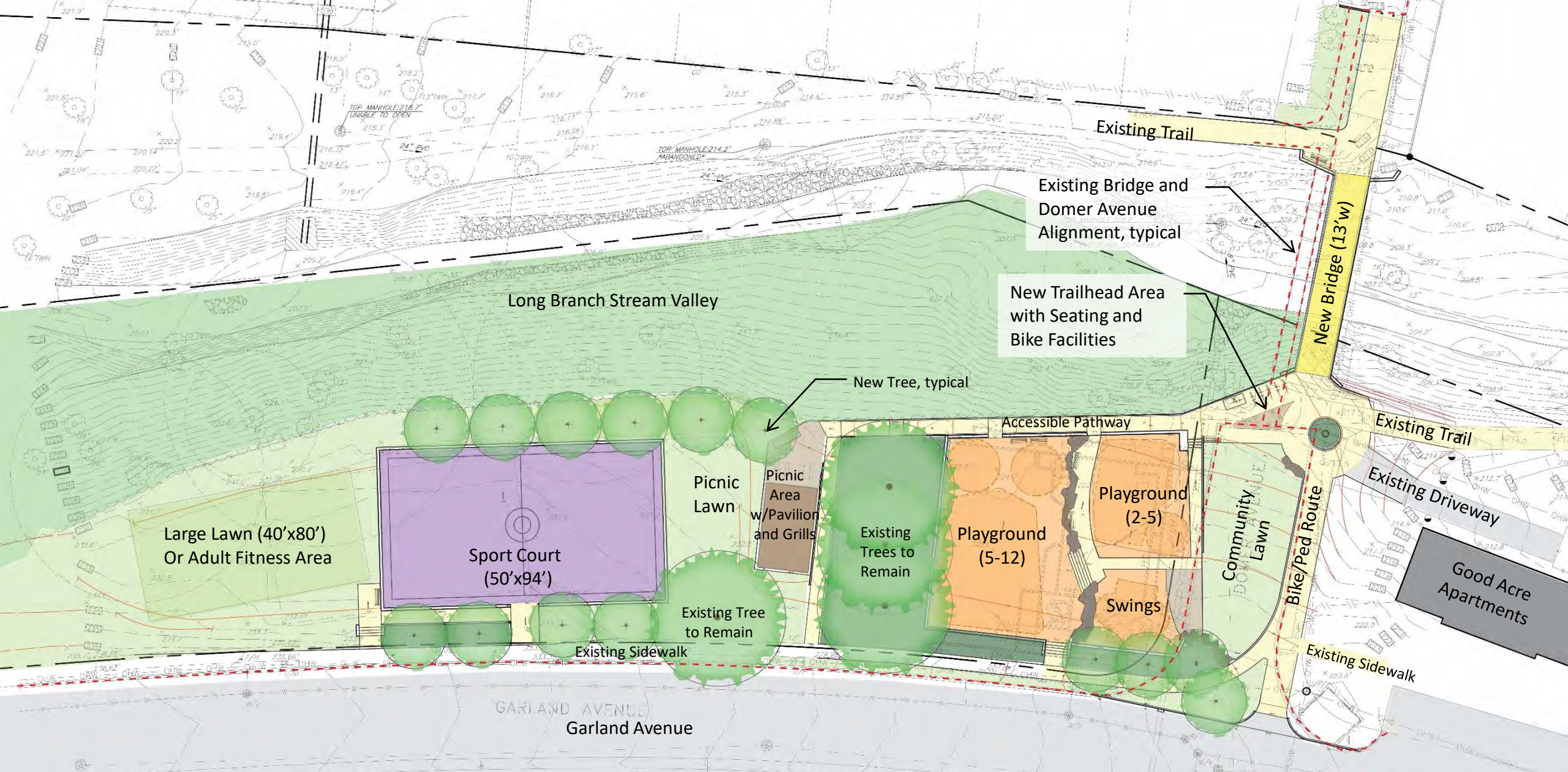


Detailed Design and Permitting
2021-2022



Construction Complete
2023

NEXT STEPS AND TIMELINE



DISCUSSION

THANK YOU!

- PROJECT WEBSITE AND
OPEN TOWN HALL SURVEY:
<http://mcp-events.org/longbranchproject>
- PROJECT MANAGER:
Christie Ciabotti
Christie.Ciabotti@MontgomeryParks.org
301-650-4365



