



# Pesticide Use Report

July 1 - December 31, 2021



# Overview

In 2015, The Montgomery County Council adopted County Code Sec. 33B - Pesticide Use. Montgomery Parks began implementing sections of the regulation on July 1, 2016.

As required under the regulation, the Parks Department must submit semi-annual reports to the County Executive and County Council on or before January 15 and July 15 of each year.



**Hand raking is one alternative method used to manage weed growth on athletic fields**

## Montgomery Parks Pesticide Use Report - July 1 - December 31, 2021

This report is available to the public in a manner consistent with the Montgomery County Open Data Act and contains the following information:

1. Registered pesticide usage details, other than listed pesticide usage, in county parks during the preceding period, including:
  - common name of each registered pesticide used
  - location of each application
  - date and time of each application
  - reason for each use of a registered pesticide
2. Status of the pesticide-free park program implemented under the regulation

Montgomery Parks provides up-to-date information about the Department's Pest Management Program to the public through multiple channels including a dedicated webpage, social media, press releases, and customer service department.

The webpage [montgomeryparks.org/about/parks/pesticides](https://montgomeryparks.org/about/parks/pesticides) includes information about the Pesticide Reduction and Integrated Pest Management (IPM) program, frequently-asked-questions and answers, semi-annual pesticide use reports, a map of pesticide-free parks, and weekly-updated schedule of planned pesticide applications including the location, date, time, product and reason for the application.

# Montgomery Parks Integrated Pest Management

The Department follows Integrated Pest Management (IPM) principles to steward resources and protect them from pests (weeds, insects, animals, and diseases) that may harm people or plants, impair function and deteriorate infrastructure.

IPM principles combine multiple strategies and techniques to manage pests such as mechanical removal of pests, cultural methods to improve soil and plant health, conserving and introducing beneficial biological controls, and using organic as well as conventional pesticides.

Montgomery Parks manages more than 37,100 acres of parkland including 421 parks, 275 playgrounds, 362 athletic fields, 299 tennis courts, 227 basketball courts, and many other amenities.

Montgomery Parks is committed to balancing the demand for recreation while protecting and conserving our valuable natural and cultural resources to meet the needs of current and future generations. As such,

- ◆ The Parks Department does not use pesticides for cosmetic purposes.
- ◆ Pesticides are only used when necessary to protect these amenities and park users.
- ◆ Staff who apply pesticides and fertilizers are certified and registered with the Maryland Department of Agriculture.



**Biological controls are released in the Brookside Gardens Conservatory to combat pests**



**Hot foam is used to manage weed growth along a warning track of an athletic field**



**Scuffle hoes (pictured) are commonly used to remove weeds in playground wood fiber surfacing**

# Alternative Maintenance Practices

Parks' Enterprise Asset Management System (EAM) tracks labor hours of staff managing weeds and other pests without the use of pesticides.

These alternative methods include biological control (using beneficial organisms to control a pest), cutting and/or digging weeds with equipment, additional field dragging, hot foam or hot water to kill weeds and other pests, additional field dragging beyond the maintenance standards, hand tool weeding, propane flaming, string-trimming, and weed suppression with mulch or landscape fabric.

**Total labor hours of alternative methods to control pests for the period of July 1 to December 31, 2021 was 8,141 hours at a labor cost of \$386,122**

ALTERNATIVE METHOD	HOURS	LABOR COST
String trim	1,978	\$196,662
Hand tool weeding	3,367	\$93,795
Hot foam / hot water	1,434	\$47,224
Cut/dig weeds with equipment	646	\$22,471
Propane flaming	83	\$3,424
Drag athletic field, additional	417	\$16,127
Playground surface grooming	183	\$4,927
Weed suppression	8	\$356
Biological control	25	\$1,136
<b>TOTAL</b>	<b>8,141</b>	<b>\$386,122</b>

# Pesticide-Free Parks

Montgomery Parks manages 45 pesticide-free parks.

Pests in pesticide-free parks, are managed using alternative methods, such as hot foam, string trimming, mechanical weed removal, and products approved for use by Montgomery County Code 33B.



Staff use propane flame weeding to remove weeds in cracks

In 2016, Montgomery Parks began managing ten pesticide-free parks as part of a pilot program in compliance with the adoption of Montgomery County Code Chapter 33B. In September 2019, an additional 35 parks were added to the program, bringing the total number of parks now managed without pesticides to 45. The pesticide-free parks are in different regions of the county to give residents options. A list and map of the pesticide-free parks is included in the appendix and on Montgomery Park's website [montgomeryparks.org/pesticides](http://montgomeryparks.org/pesticides).

The pesticide-free parks are diverse and include local, urban, and neighborhood parks as well as neighborhood conservation areas. Amenities in these parks are equally diverse and include 20 basketball courts, 26 tennis courts, 11 athletic field diamonds, 12 athletic field rectangles, 9 picnic shelters and 31 playgrounds. Instead of synthetic pesticides to manage weeds, products approved for use by Montgomery County Code 33B are utilized along with alternative methods such as string trimming, hand tool removal, propane flaming, and hot foam treatments. The purpose of the pesticide-free park program is to observe parks managed without synthetic pesticides over time and determine the successes, challenges, and failures under this type of management. Pesticide-free parks are routinely inspected by staff to assess status of the amenities. A few parks have been removed from the program because pest problems could not be addressed by only using pesticide-free methods.

Over the last six months, wet weather and workforce reductions due to COVID-19 protocols created challenges in the maintenance of pesticide-free parks. Alternative practices have been successful but are more costly than applying a synthetic pesticide treatment.

At Kings Crossing Local Park, a pesticide-free park, 37 staff hours were required to complete two hot foam treatments to remove weeds from an athletic field, for a total cost of \$1,665. In comparison, applying synthetic pesticide treatments at the same field prior to the park going pesticide-free, averaged 6 hours per year with a total cost of \$270.

# Pesticide-Free Playgrounds

Montgomery Parks maintains all 275 playgrounds without the use of pesticides.



Staff apply hot foam to manage weed growth

To maintain our department's 275 playgrounds without the use of pesticides, playground maintenance crews report using hand tool weeding methods and hot foam equipment most often to manage weeds that infiltrate the wood fiber surfacing.

During the last six months, wet weather conditions resulted in faster weed growth. Maintenance standards for the playgrounds could not be maintained within the normal two-week cycle. Bermuda grass and Carolina horsenettle continue to be a challenge to control with alternative practices.

Staff continued to trial the hot foam stream machine on various weeds. The machine works by spraying a foam consisting of a natural blend of plant oils and sugars including maize, potatoes, wheat, rapeseed and coconut directly onto weeds. At Fountain Hills Local Park, staff applied hot foam to rid the playground of annual and perennial weeds. A second application was needed for an outbreak of thistle. Additional applications will be needed in the future to eradicate the thistle. At Dickerson Local Park, the foam stream machine was successfully used to remove crabgrass.



Staff remove weeds from the playground at Olney Acres Park by hand and with mechanical tools. This weed growth occurred during a four-week period in the summer.

# Integrated Pest Management on Athletic Fields



Staff operate athletic field maintenance equipment on an infield to remove weed growth.

Staff in all management areas continue to invest in versatile athletic field maintenance equipment to remove weeds without pesticides on skinned areas such as warning tracks and infields. The equipment uses attachments such as rakes, weed bar to cut weeds and athletic field groomer/renovator.

Staff are also replacing high maintenance blue stone bench areas in ballfields with poured concrete. Maintaining the blue dust areas are labor-intensive, requiring string trimming and mechanical weed removal to keep the area weed free. The poured concrete significantly reduces maintenance and weeds.



(Left) An example of a blue stone player's bench area that can be prone to weeds. (Right) A poured concrete player's bench area is installed at Fountain Hills Local Park to allow for easier maintenance.

# Athletic Field Pilot

In October 2019, Montgomery Parks began a three-year athletic field pilot program to learn about the impacts and the best practices for maintaining athletic fields using organic turf management techniques. Two bermuda grass fields at Laytonia Recreational Park were selected for the pilot. This location provides an excellent comparison of field maintenance using integrated pest management strategies vs. organic methods. The pilot is being implemented by a contractor. A team of turfgrass experts from the University of Maryland is overseeing program implementation and performing independent assessments for consistency and field quality.

The organic pilot program has now completed a second year of evaluation. In 2020, fields were unexpectedly closed for five months during the pandemic, and once open, usage continued to be below normal. In 2021, athletic play has slowly returned back to expected levels.

The University of Maryland has continued to perform field analyzation on both Laytonia’s fields as well as their in-house test plots. The key matrixes they are evaluating are surface firmness and shear strength. The surface firmness which has a direct correlation to player safety, measures how much impact the surface can take from a falling hemispherical object. Shear strength measures the amount of side pressure the turfgrass can take before it shears at the root crowns.

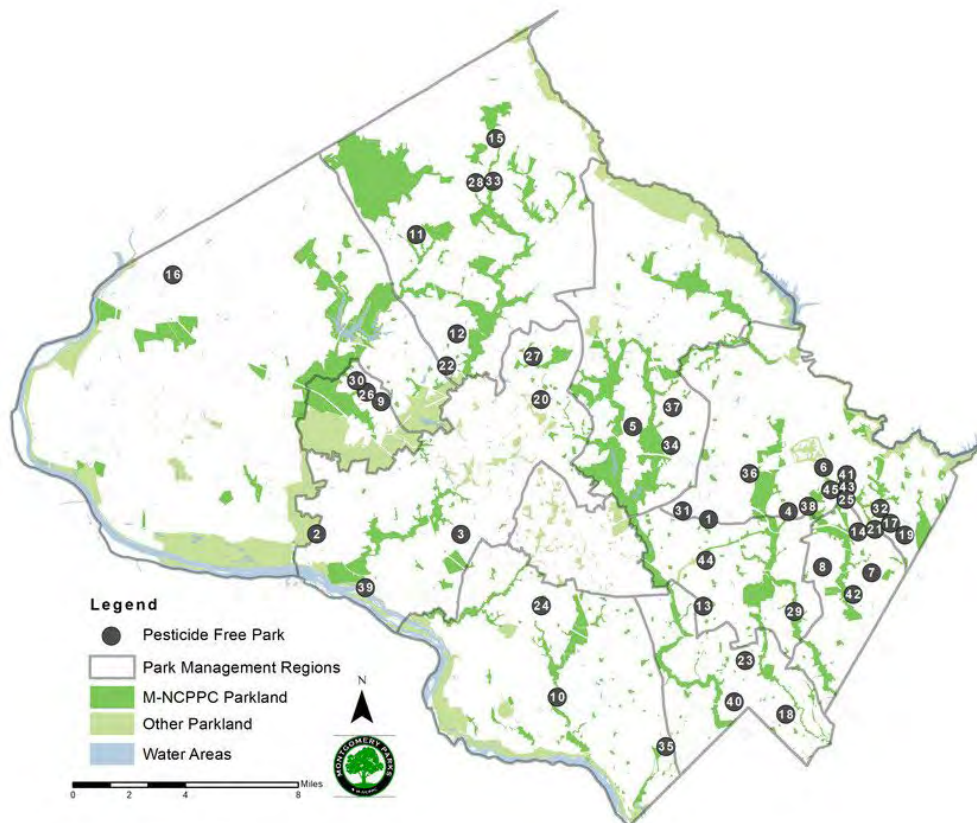
The University of Maryland has indicated that the results of the fields and test plots show marginal differences when comparing the two programs. As expected with newly established fields, their durability during the initial years is strong, especially with a high input maintenance program. The next year or two should provide better data for player safety and playability between the turf maintenance approaches.

Aerial shot of the two rectangular athletic fields at Laytonia Recreational Park that are being used for the pilot program





# Appendix: Map and List of Pesticide-Free Parks



## Pesticide Free Parks

- |  |   |
|--|---|
| 1 Aquarius Local Park                  | 24 Highland Stone Neighborhood Park       |
| 2 Berryville Road NCA                  | 25 Hopefield Neighborhood Park            |
| 3 Big Pines Local Park                 | 26 Hoyles Mill Village Local Park         |
| 4 Bonifant NCA                         | 27 Hunters Woods NCA                      |
| 5 Bowie Mill Local Park                | 28 John Haines Neighborhood Park          |
| 6 Browns Corner NCA                    | 29 Kemp Mill Estates Local Park           |
| 7 Calverton NCA                        | 30 King's Crossing Local Park             |
| 8 Cannon Road Local Park               | 31 Manor Park NCA                         |
| 9 Cedar Creek Local Park               | 32 Miles Road NCA                         |
| 10 Cindy Lane Neighborhood Park        | 33 Moyer Road Local Park                  |
| 11 Clarksburg Village North Local Park | 34 Norbeck Meadows Neighborhood Park      |
| 12 Clearspring Local Park              | 35 Norwood Local Park                     |
| 13 College View Neighborhood Park      | 36 Norwood Village NCA                    |
| 14 Countryside Neighborhood Park       | 37 Olney Acres Neighborhood Park          |
| 15 Damascus Neighborhood Park          | 38 Peach Orchard NCA                      |
| 16 Dickerson Local Park                | 39 Pennyfield Lock NCA                    |
| 17 Duvall Road NCA                     | 40 Rosemary Hills-Lyttonsville Local Park |
| 18 East Silver Spring Urban Park       | 41 Spencerville Local Park                |
| 19 Edgewood Neighborhood Park          | 42 Stonehedge Local Park                  |
| 20 Emory Grove Hills NCA               | 43 Twinponds NCA                          |
| 21 Fairdale Road NCA                   | 44 Valleywood Neighborhood Park           |
| 22 Fox Chapel Neighborhood Park        | 45 Wembrough Neighborhood Park            |

**Products Applied By Montgomery Parks Staff - July 1, 2021 - December 31, 2021**

<b>Date</b>	<b>Location</b>	<b>Area Treated</b>	<b>Product</b>	<b>Problem</b>	<b>Reason for treatment</b>	<b>Start</b>
2-Jul	Germantown Town Center Urban Park	landscape beds	Three-Way	ground ivy, virginia creeper, porcelain berry	protect amenities/infrastructure/plantings	8:30 AM
6-Jul	Brookside Gardens	Rose Garden	Fore	blackspot	support plant/turf health	5:15 AM
7-Jul	Cabin John Athletic Area	Fields 5 and 6	Primo Maxx	turf growth	support plant/turf health	6:30 AM
7-Jul	Cabin John Athletic Area	Povich Field and Field 2	Primo Maxx	turf growth	support plant/turf health	8:00 AM
8-Jul	Damascus Recreational Park	planted hillside by tennis court	Cheetah Pro	broadleaf and grassy weeds	support plant/turf health	7:30 AM
9-Jul	Brookside Gardens	Reflection Terrace and Gude Island	Phyton	Dothistroma	support plant/turf health	7:30 AM
9-Jul	Laytonia Recreational Park	Field 1	Fiesta	clover, dandelion	support plant/turf health	9:00 AM
12-Jul	Layhill Local Park	Fields 2 and 4	Drive XLR8	broadleaf weeds and annual grasses	meet standards of play/player safety	6:30 AM
12-Jul	Layhill Local Park	Fields 2 and 4	Momentum 4Score	broadleaf weeds and annual grasses	meet standards of play/player safety	6:30 AM
12-Jul	Fairland Recreational Park	Fields 1 and 2	Drive XLR8	broadleaf weeds and annual grasses	meet standards of play/player safety	7:45 AM
12-Jul	Fairland Recreational Park	Fields 1 and 2	Momentum 4Score	broadleaf weeds and annual grasses	meet standards of play/player safety	7:45 AM
12-Jul	Columbia Local Park	Fields 1, 2 and 3	Drive XLR8	broadleaf weeds and annual grasses	meet standards of play/player safety	9:00 AM
12-Jul	Columbia Local Park	Fields 1, 2 and 3	Momentum 4Score	broadleaf weeds and annual grasses	meet standards of play/player safety	9:00 AM
12-Jul	Burtonsville Local Park	Fields 1 and 2	Drive XLR8	broadleaf weeds and annual grasses	meet standards of play/player safety	10:45 AM
12-Jul	Burtonsville Local Park	Fields 1 and 2	Momentum 4Score	broadleaf weeds and annual grasses	meet standards of play/player safety	10:45 AM
12-Jul	Cloverly Local Park	Fields 1 and 2	Drive XLR8	broadleaf weeds and annual grasses	meet standards of play/player safety	12:00 PM
12-Jul	Cloverly Local Park	Fields 1 and 2	Momentum 4Score	broadleaf weeds and annual grasses	meet standards of play/player safety	12:00 PM
12-Jul	Briggs Chaney Community Garden	Garden plot	Sevin	hornets	prevent harm	9:00 PM
12-Jul	Briggs Chaney Community Garden	Garden plot	Raid	wasps	prevent harm	9:30 PM
13-Jul	Brookside Gardens	Rose Garden	Twosome	blackspot	support plant/turf health	5:45 AM
13-Jul	East Norbeck Local Park	Fields 1 and 2	Drive XLR8	broadleaf weeds and annual grasses	meet standards of play/player safety	6:30 AM
13-Jul	East Norbeck Local Park	Fields 1 and 2	Momentum 4Score	broadleaf weeds and annual grasses	meet standards of play/player safety	6:30 AM
13-Jul	Northwest Branch Recreational Park	Field 1	Drive XLR8	broadleaf weeds and annual grasses	meet standards of play/player safety	7:45 AM
13-Jul	Northwest Branch Recreational Park	Field 1	Momentum 4Score	broadleaf weeds and annual grasses	meet standards of play/player safety	7:45 AM
13-Jul	Manor Oaks Local Park	Field 1	Drive XLR8	broadleaf weeds and annual grasses	meet standards of play/player safety	8:30 AM
13-Jul	Manor Oaks Local Park	Field 1	Momentum 4Score	broadleaf weeds and annual grasses	meet standards of play/player safety	8:30 AM
13-Jul	Greenwood Local Park	Fields 1 and 2	Drive XLR8	broadleaf weeds and annual grasses	meet standards of play/player safety	9:15 AM
13-Jul	Greenwood Local Park	Fields 1 and 2	Momentum 4Score	broadleaf weeds and annual grasses	meet standards of play/player safety	9:15 AM
14-Jul	Olney Manor Recreational Park	Fields 1, 2, 3, 4 and 5	Drive XLR8	broadleaf weeds and annual grasses	meet standards of play/player safety	6:30 AM
14-Jul	Olney Manor Recreational Park	Fields 1, 2, 3, 4 and 5	Momentum 4Score	broadleaf weeds and annual grasses	meet standards of play/player safety	6:30 AM
14-Jul	Germantown Town Center Urban Park	landscape beds	Three-Way	beggar weed, buckhorn, lespedeza, purslane	protect plantings	7:00 AM
14-Jul	Brookside Gardens	service area parking lots, curbs, tree rings	Prosecutor Pro	non-native invasive weeds	protect amenities/infrastructure	8:00 AM
14-Jul	Ednor Local Park	Fields 1 and 2	Drive XLR8	broadleaf weeds and annual grasses	meet standards of play/player safety	9:15 AM
14-Jul	Ednor Local Park	Fields 1 and 2	Momentum 4Score	broadleaf weeds and annual grasses	meet standards of play/player safety	9:15 AM
15-Jul	South Germantown Recreational Park	tree rings, landscape beds	Cheetah Pro	broadleaf and invasive weeds	protect amenities/infrastructure	7:00 AM
15-Jul	Brookside Gardens	service area parking lots, curbs, tree rings	Prosecutor Pro	non-native invasive weeds	protect amenities/infrastructure	8:00 AM
16-Jul	South Germantown Recreational Park	tree rings, landscape beds	Cheetah Pro	broadleaf and invasive weeds	protect amenities/infrastructure	7:00 AM
16-Jul	Brookside Gardens	Rose Garden	Halo 75 WDG Select	nutsedge	protect plantings	8:30 AM
16-Jul	Brookside Gardens	Gude Garden, planting beds, pond banks	Rodeo	weeds	protect plantings	11:00 AM
19-Jul	Black Hill Regional Park	tree rings, landscape beds	Prosecutor	grasses, ground ivy	protect amenities/infrastructure/plantings	6:30 AM
20-Jul	Brookside Gardens	Rose Garden	Armada	blackspot	support plant/turf health	5:30 AM
20-Jul	Darby Historical/Cultural Park	landscape beds	Prosecutor	grasses, ground ivy	protect amenities/infrastructure/plantings	6:30 AM
20-Jul	South Germantown Recreational Park	tree rings, landscape beds	Cheetah Pro	broadleaf and invasive weeds	protect amenities/infrastructure	7:00 AM
20-Jul	Woodstock Equestrian Park	fence lines	Prosecutor	grasses, buckhorn, clover	protect amenities/infrastructure	8:00 AM
21-Jul	South Germantown Recreational Park	tree rings, landscape beds	Cheetah Pro	broadleaf and invasive weeds	protect amenities/infrastructure	7:00 AM
21-Jul	South Germantown Recreational Park	Fields 23 and 24	Oxadiazon 2G	poa, chickweed, broadleaf weeds	support plant/turf health	7:00 AM
22-Jul	South Germantown Recreational Park	tree rings, landscape beds	Cheetah Pro	broadleaf and invasive weeds	protect amenities/infrastructure	7:00 AM
22-Jul	Brookside Gardens	Gude Garden	Conserve SC	Catalpa Sphinx Moth	protect plantings	7:30 AM
23-Jul	Germantown Town Center Urban Park	landscape beds	Sedgehammer	nutsedge	protect plantings	12:30 PM
27-Jul	Brookside Gardens	Rose Garden	Myclobutanil	blackspot	support plant/turf health	5:45 AM
27-Jul	Little Seneca SVU Unit #1	landscape beds / fencing	Element 3A	bittersweet, choker cherry, multiflora rose, honeysuckle	protect amenities/infrastructure	6:45 AM
27-Jul	Little Seneca SVU Unit #1	stone, landscape beds, cracks in pavers	Prosecutor	crabgrass, goosegrass, ground ivy, clover	protect amenities/infrastructure	8:30 AM
28-Jul	Black Hill Regional Park	fence lines	Element 3A	bittersweet, bush honeysuckle, porcelain berry, tree of heaven	restore habitat/protect ecosystem	6:30 AM
28-Jul	Brookside Gardens	landscape beds, tree circles, cracks	Prosecutor Pro	weeds	protect plantings	8:00 AM
29-Jul	Brookside Nature Center	Children's play area	Sevin	hornets	prevent harm	9:00 PM

Date	Location	Area Treated	Product	Problem	Reason for treatment	Start
30-Jul	The Lodge at Little Seneca Creek	landscape beds	Sedgehammer	nutsedge	protect plantings	6:30 AM
3-Aug	Brookside Gardens	Rose Garden	Fore	blackspot	support plant/turf health	6:00 AM
3-Aug	Waring Station Local Park	fence lines	Element 3A	porcelain berry, japanese honeysuckle	protect amenities/infrastructure	7:00 AM
3-Aug	Woodlawn Manor Cultural Park	landscape beds	Momentum 4Score	bermuda, thistle, spurge, orchard grass, dandelion, plantain	protect plantings	7:00 AM
3-Aug	Woodlawn Manor Cultural Park	landscape beds	Prosecutor	bermuda, thistle, spurge, orchard grass, dandelion, plantain	protect plantings	7:00 AM
3-Aug	Laytonia Recreational Park	planting beds, tree rings, structures	Round Up Quick Pro	thistle, johnsongrass, bindweed, non-native invasive weeds	protect amenities/infrastructure/plantings	8:00 AM
3-Aug	Germantown Town Center Urban Park	landscape beds	Fusilade II	goosegrass, orchard grass, crabgrass, bermuda grass	protect plantings	9:00 AM
3-Aug	Agricultural History Farm Park	planting beds, tree rings, structures	Round Up Quick Pro	thistle, johnsongrass, bindweed, non-native invasive weeds	protect amenities/infrastructure/plantings	10:00 AM
3-Aug	Rock Creek Regional Park	fence, planting beds, tree rings, structures	Round Up Quick Pro	thistle, johnsongrass, bindweed, non-native invasive weeds	protect amenities/infrastructure/plantings	2:00 PM
4-Aug	Rock Creek Regional Park	maintenance yard	Aerosol	wasps	prevent harm	7:45 AM
4-Aug	Olney Manor Recreational Park	landscape beds	Momentum 4Score	bermuda, thistle, spurge, orchard grass, dandelion, plantain	protect plantings	9:00 AM
4-Aug	Olney Manor Recreational Park	landscape beds	Prosecutor	bermuda, thistle, spurge, orchard grass, dandelion, plantain	protect plantings	9:00 AM
5-Aug	Brookside Gardens	Conservatory	Safari, Distance, Purespray	whitefly	protect plantings	6:30 AM
10-Aug	Clarkmont Local Park	landscape beds	Prosecutor	goosegrass, crabgrass, broadleaf weeds	protect plantings	6:30 AM
10-Aug	Brookside Gardens	Rose Garden	Twosome	blackspot	support plant/turf health	6:45 AM
10-Aug	Ridge Road Recreational Park	Fields 4 and 5	Propiconazole	dollar spot	support plant/turf health	7:30 AM
19-Aug	Brookside Gardens	Rose Garden	Armada	blackspot	support plant/turf health	6:45 AM
19-Aug	Brookside Gardens	Rose Garden	Halo 75 WDG Select	nutsedge	protect plantings	8:15 AM
23-Aug	Brookside Gardens	Conservatory	Altus	mealybug	protect plantings	6:30 AM
23-Aug	Brookside Gardens	Conservatory	Xpire, Altus, Capsil	whitefly, mealybug	protect plantings	6:30 AM
24-Aug	Black Hill Regional Park	landscape beds	Prosecutor	grasses, ground ivy	protect amenities/infrastructure/plantings	6:30 AM
24-Aug	South Germantown Recreational Park	tree rings, landscape beds	Cheetah Pro	broadleaf and invasive weeds	protect amenities/infrastructure	7:00 AM
26-Aug	Brookside Gardens	Rose Garden	Armada	blackspot	support plant/turf health	6:20 AM
27-Aug	South Germantown Recreational Park	tree rings, landscape beds	Cheetah Pro	broadleaf and invasive weeds	protect amenities/infrastructure	7:00 AM
30-Aug	South Germantown Recreational Park	Fields C, D, E and F	Drive XLR8	crabgrass, goosegrass	support plant/turf health	7:00 AM
30-Aug	South Germantown Recreational Park	Fields C, D, E and F	Pylex	crabgrass, goosegrass	support plant/turf health	7:00 AM
31-Aug	Blair Local Park	Fields 1 and 2	Drive XLR8	crabgrass, goosegrass, broadleaf plantain, clover	meet standards of play/player safety	4:45 AM
31-Aug	Clarkmont Local Park	landscape beds	Prosecutor	vines, crabgrass	protect amenities/infrastructure/plantings	7:00 AM
31-Aug	Germantown Town Center Urban Park	landscape beds	Prosecutor	swinecress, spurge, smartweed	protect amenities/infrastructure/plantings	10:00 AM
31-Aug	Germantown Town Center Urban Park	landscape beds	Prosecutor	goosegrass, crabgrass, broadleaf weeds	protect amenities/infrastructure/plantings	12:45 PM
2-Sep	Brookside Gardens	Rose Garden	Fore	blackspot	support plant/turf health	6:30 AM
2-Sep	Laytonia Recreational Park	planting beds, tree rings, structures	Round Up Quick Pro	thistle, johnsongrass, bindweed, non-native invasive weeds	protect amenities/infrastructure/plantings	8:00 AM
2-Sep	Agricultural History Farm Park	planting beds, tree rings, structures	Round Up Quick Pro	thistle, johnsongrass, bindweed, non-native invasive weeds	protect amenities/infrastructure/plantings	10:00 AM
7-Sep	The Lodge at Little Seneca Creek	landscape beds	Fusilade II	grasses	protect plantings	9:00 AM
9-Sep	Germantown Town Center Urban Park	landscape beds	Three-Way	vines	protect plantings	8:00 AM
9-Sep	Brookside Gardens	Conservatory	Ultra Pure Oil	scale, mealybug	protect plantings	5:30 PM
10-Sep	Brookside Gardens	Rose Garden	Chlorothalonil	blackspot	support plant/turf health	7:00 AM
10-Sep	Unity Neighborhood Park	planting beds, tree rings	Round Up Quick Pro	non-native invasive weeds	protect amenities/infrastructure/plantings	8:30 AM
10-Sep	Norbeck Muncaster Mill Neighborhood Park	planting beds, tree rings	Round Up Quick Pro	non-native invasive weeds	protect amenities/infrastructure/plantings	9:45 AM
10-Sep	Laytonia Recreational Park	tree rings, parking lot, Field 1 warning track	Round Up Quick Pro	thistle, johnsongrass, bindweed, non-native invasive weeds	protect amenities/infrastructure/plantings	1:30 PM
15-Sep	Black Hill Regional Park	fence lines, landscape beds	Three-Way	morning glory, bittersweet, poison ivy, virginia creeper	protect amenities/infrastructure	9:00 AM
15-Sep	Blair Local Park	Fields 1 and 2	Mirimichi Green	broadleaf weeds and annual grasses	protect amenities/infrastructure	10:30 AM
16-Sep	Blair Local Park	Fields 1 and 3	Mirimichi Green	broadleaf weeds and annual grasses	protect amenities/infrastructure	10:30 AM
17-Sep	Laytonia Recreational Park	Field 1 turf	Dylox	grubs	support plant/turf health	9:00 AM
20-Sep	Brookside Gardens	Rose Garden	Armada	blackspot	support plant/turf health	7:00 AM
20-Sep	Brookside Gardens	Rose Garden - cracks/crevices	Glyphosate	weeds	protect amenities/infrastructure	8:30 AM
21-Sep	Brookside Gardens	landscape beds around the Conservatory	Glyphosate	weeds	support plant/turf health	8:15 AM
21-Sep	Blair Local Park	Field 1, fence lines	Mirimichi Green	crab grass, goosegrass, nutsedge, broadleaf weeds	protect amenities/infrastructure	10:30 AM
21-Sep	Brookside Gardens	Conservatory	Distance, Bifen, Abamectin	whitefly, mealybug, mites	protect plantings	5:30 PM
29-Sep	Brookside Gardens	Rose Garden	Myclobutanil	blackspot	support plant/turf health	7:45 AM
4-Oct	Elm Street Urban Park	landscaped beds	Prosecutor	noxious weeds	protect plantings	11:30 AM
7-Oct	Brookside Gardens	Rose Garden	Fore	blackspot	support plant/turf health	7:00 AM
12-Oct	Woodstock Equestrian Park	fence lines	Prosecutor	goosegrass, horsenettle, bittersweet	protect amenities/infrastructure	7:00 AM
12-Oct	Black Hill Regional Park	fence lines	Fusilade II	goosegrass, crowfoot grass, dallisgrass, stiltgrass	protect amenities/infrastructure	10:00 AM
15-Oct	Brookside Gardens	Gude Garden, planting beds, pond banks	Rodeo	weeds	protect plantings	2:15 PM
18-Oct	Waring Station Local Park	fence lines	Three-Way	mile-a-minute, honeysuckle, garlic mustard, wineberry	protect amenities/infrastructure	7:00 AM

Date	Location	Area Treated	Product	Problem	Reason for treatment	Start
18-Oct	Germantown Town Center Urban Park	landscape beds	Three-Way	beggar weed, bittercress, dandelion, ground ivy	protect plantings	9:00 AM
19-Oct	Clarkmont Local Park	landscape beds, tree rings	Prosecutor	ground ivy, horseweed, knotweed, barnyard grass	protect plantings	7:00 AM
19-Oct	South Germantown Recreational Park	Fields 23 and 24	Oxadiazon 2G	poa, chickweed, broadleaf weeds	support plant/turf health	7:00 AM
19-Oct	Brookside Gardens	Rose Garden	Chlorothalonil	blackspot	support plant/turf health	7:40 AM
<b>Products Applied By Contractors - July 1, 2021 - December 31, 2021</b>						
Date	Location	Area Treated	Product	Problem	Reason for treatment	Start
8-Jul	Bennett Creek Conservation Park	wooded area between meadow/stream	Rodeo	barberry	restore habitat/protect ecosystem	6:45 AM
19-Jul	Hoyles Mill Conservation Park	area next to the trail	Round Up Custom	barberry, multiflora rose, wineberry, porcelain berry	restore habitat/protect ecosystem	6:15 AM
20-Jul	Hoyles Mill Conservation Park	area next to the trail	Round Up Custom	barberry, multiflora rose, wineberry, porcelain berry	restore habitat/protect ecosystem	7:10 AM
21-Jul	Cabin John Local Park/SVU 1	along stream trail	Garlon 3A	non-native invasive weeds	restore habitat/protect ecosystem	6:45 AM
22-Jul	River Road Shale Barrens Conservation Park	wood areas	Rodeo	tree of heaven, honeysuckle	restore habitat/protect ecosystem	7:30 AM
23-Jul	Maydale Conservation Park	wooded area adjacent to stream	Round Up Custom	barberry, multiflora rose, honeysuckle, porcelain berry	restore habitat/protect ecosystem	6:45 AM
26-Jul	River Road Shale Barrens Conservation Park	wooded area by path	Rodeo	multiflora rose, honeysuckle, russian olive	restore habitat/protect ecosystem	6:30 AM
27-Jul	Edith Throckmorton Neighborhood Park	new boardwalk area and mitigation tree	Round up Custom	barberry, multiflora rose, wineberry, porcelain berry, etc.	restore habitat/protect ecosystem	6:45 AM
28-Jul	North Germantown Greenway SVP	meadow	Round Up Custom	barberry, tree of heaven, multiflora rose, etc.	restore habitat/protect ecosystem	7:45 AM
28-Jul	Edith Throckmorton Neighborhood Park	new boardwalk area and mitigation tree	Round Up Custom	barberry, porcelain berry, multiflora rose	restore habitat/protect ecosystem	6:45 AM
29-Jul	North Germantown Greenway SVP	meadow	Round Up Custom	barberry, tree of heaven, multiflora rose, etc.	restore habitat/protect ecosystem	7:15 AM
30-Jul	North Germantown Greenway SVP	meadow	Round Up	barberry, tree of heaven, multiflora rose, etc.	restore habitat/protect ecosystem	6:45 AM
2-Aug	North Germantown Greenway SVP	meadow	Round Up	barberry, tree of heaven, multiflora rose, etc.	restore habitat/protect ecosystem	6:45 AM
2-Aug	Crabbs Branch Stream Valley Park	meadow/woods up to the stream	Round Up Custom	barberry, bittersweet, honeysuckle, porcelain berry	restore habitat/protect ecosystem	7:30 AM
3-Aug	Crabbs Branch Stream Valley Park	meadow/woods up to the stream	Round Up Custom	barberry, bittersweet, honeysuckle, porcelain berry	restore habitat/protect ecosystem	7:30 AM
4-Aug	Crabbs Branch Stream Valley Park	meadow/woods up to the stream	Round Up Custom	barberry, bittersweet, honeysuckle, porcelain berry	restore habitat/protect ecosystem	7:30 AM
5-Aug	Crabbs Branch Stream Valley Park	meadow/woods up to the stream	Round Up Custom	barberry, bittersweet, honeysuckle, porcelain berry	restore habitat/protect ecosystem	7:25 AM
9-Aug	North Branch Stream Valley Park Unit #3	meadow area south of gas line right of way	Garlon 3A/RoundUpCustom	mile-a-minute, porcelain berry	restore habitat/protect ecosystem	7:00 AM
10-Aug	North Branch Stream Valley Park Unit #3	meadow area south of gas line right of way	Garlon 3A	barberry, multiflora rose, mile-a-minute	restore habitat/protect ecosystem	7:00 AM
23-Aug	North Branch Stream Valley Park Unit #3	meadow area south of gas line right of way	Garlon 3A	barberry, multiflora rose, porcelain berry,	restore habitat/protect ecosystem	7:00 AM
24-Aug	North Branch Stream Valley Park Unit #3	meadow area south of gas line right of way	Garlon 3A	barberry, multiflora rose, porcelain berry,	restore habitat/protect ecosystem	7:00 AM
31-Aug	Bennett Creek Conservation Park	wooded area between meadow/stream	Rodeo	barberry, porcelain berry, multiflora rose	restore habitat/protect ecosystem	7:15 AM
8-Sep	North Branch Stream Valley Park Unit #3	wood area	Round Up Custom	barberry, multiflora rose, autumn olive	restore habitat/protect ecosystem	7:45 AM
13-Sep	Sligo Creek Stream Valley Park Unit 4	hillside meadow	Garlon 3A	barberry, bittersweet, wineberry, mile-a-minute	restore habitat/protect ecosystem	7:15 AM
16-Sep	North Branch Stream Valley Park Unit #3	wood area	Garlon 3A	barberry, multiflora rose, autumn olive	restore habitat/protect ecosystem	7:00 AM
20-Sep	Arylawn Local Park	natural areas	Round Up Custom	bamboo, japanese knotweed	restore habitat/protect ecosystem	7:45 AM
20-Sep	Bennett Creek Conservation Park	wooded area between meadow/stream	Round Up Custom	barberry	restore habitat/protect ecosystem	8:00 AM
20-Sep	Cabin John Local /Stream Valley Park Unit 1	floodplain on west side of creek	Round Up Custom	japanese knotweed, curly dock	restore habitat/protect ecosystem	10:00 AM
21-Sep	Red Door Store Historical/Cultural Park	meadow areas	Garlon 3A	barberry, multiflora rose, autumn olive	restore habitat/protect ecosystem	7:00 AM
24-Sep	North Germantown Greenway SVP	meadow	Round Up	barberry, tree of heaven, multiflora rose, etc.	restore habitat/protect ecosystem	7:45 AM
24-Sep	Bennett Creek Conservation Park	meadow area, east side of park	Garlon 3A	barberry, bittersweet, multiflora rose, honeysuckle, etc.	restore habitat/protect ecosystem	8:00 AM
27-Sep	North Germantown Greenway SVP	meadow	Round Up Custom	barberry, tree of heaven, multiflora rose, etc.	restore habitat/protect ecosystem	7:15 AM
27-Sep	Martin Luther King Jr. Recreational Park	pond	Red Eagle Flumioxazin	creeping water primrose, waterlilies, algae, etc.	restore habitat/protect ecosystem	8:00 AM
27-Sep	Meadowside Nature Center	meadow	Rodeo	non-native invasive grasses	restore habitat/protect ecosystem	11:00 AM
27-Sep	Locust Grove Nature Center	meadow	Rodeo	non-native invasive weeds	restore habitat/protect ecosystem	1:00 PM
27-Sep	North Branch Stream Valley Park Unit #3	wood and meadow areas	Garlon 3A	barberry, multiflora rose, autumn olive	restore habitat/protect ecosystem	7:45 AM
28-Sep	North Germantown Greenway SVP	meadow	Round Up Custom	barberry, tree of heaven, multiflora rose, etc.	restore habitat/protect ecosystem	7:30 AM
28-Sep	Red Door Store Historical/Cultural Park	meadow areas	Rodeo	silvergrass	restore habitat/protect ecosystem	10:45 AM
28-Sep	North Branch Stream Valley Park Unit #3	wood and meadow areas	Garlon 3A	barberry, multiflora rose, autumn olive	restore habitat/protect ecosystem	7:15 AM
29-Sep	Red Door Store Historical/Cultural Park	meadow areas	Garlon 3A	barberry, multiflora rose, blackberry	restore habitat/protect ecosystem	6:45 AM
29-Sep	North Germantown Greenway SVP	meadow	Round Up Custom	barberry, tree of heaven, multiflora rose, honeysuckle, etc.	restore habitat/protect ecosystem	7:15 AM
29-Sep	North Branch Stream Valley Park Unit #3	wood and meadow areas	Garlon 3A	barberry, multiflora rose, autumn olive	restore habitat/protect ecosystem	8:00 AM
30-Sep	Red Door Store Historical/Cultural Park	meadow areas	Garlon 3A	barberry, multiflora rose, blackberry	restore habitat/protect ecosystem	6:45 AM
30-Sep	North Germantown Greenway SVP	meadow	Round Up Custom	barberry, tree of heaven, multiflora rose, etc.	restore habitat/protect ecosystem	7:30 AM
30-Sep	North Branch Stream Valley Park Unit #3	wood and meadow areas	Garlon 3A	barberry, multiflora rose, autumn olive	restore habitat/protect ecosystem	7:15 AM
4-Oct	Bennett Creek Conservation Park	meadow area, east side of park	Garlon 3A	barberry, bittersweet, multiflora rose, honeysuckle, etc.	restore habitat/protect ecosystem	7:40 AM
7-Oct	Ken-Gar Palisades Local Park	north end of park	Rodeo	bamboo	restore habitat/protect ecosystem	10:30 AM
7-Oct	Matthew Henson State Park Unit #3	wooded area	Rodeo	bamboo	restore habitat/protect ecosystem	2:00 PM
8-Oct	Ken-Gar Palisades Local Park	wetland area	Round Up Custom	cattails	restore habitat/protect ecosystem	10:00 AM
11-Oct	North Germantown Greenway SVP	meadow	Round Up Custom	barberry, tree of heaven, multiflora rose, etc.	restore habitat/protect ecosystem	7:30 AM

Date	Location	Area Treated	Product	Problem	Reason for treatment	Start
12-Oct	North Germantown Greenway SVP	meadow	Round Up Custom	barberry, tree of heaven, multiflora rose, etc.	restore habitat/protect ecosystem	7:30 AM
12-Oct	Bennett Creek Conservation Park	wooded area between meadow/stream	Rodeo	wineberry	restore habitat/protect ecosystem	8:30 AM
14-Oct	Edith Throckmorton Neighborhood Park	new boardwalk area and mitigation tree	Rodeo	barberry, multiflora rose, wineberry, porcelain berry, etc.	restore habitat/protect ecosystem	7:30 AM
15-Oct	Red Door Store Historical/Cultural Park	meadow areas	Garlon 3A	barberry, multiflora rose, porcelain berry, blackberry	restore habitat/protect ecosystem	7:00 AM
18-Oct	North Germantown Greenway SVP	meadow	Round Up	barberry, tree of heaven, multiflora rose, etc.	restore habitat/protect ecosystem	4:30 PM
19-Oct	Bennett Creek Conservation Park	meadow area, east side of park	Rodeo	barberry, bittersweet, multiflora rose, honeysuckle, etc.	restore habitat/protect ecosystem	8:30 AM
20-Oct	Locust Grove Nature Center	forest areas	Pathfinder II	tree of heaven	restore habitat/protect ecosystem	7:45 AM
21-Oct	Hillandale Local Park	newly planted trees	Rodeo	multiflora rose, wineberry, mugwort, porcelain berry	protect plantings	7:30 AM
21-Oct	Meadowbrook Local Park	newly planted trees	Rodeo	multiflora rose, wineberry, mugwort, porcelain berry	protect plantings	11:00 AM
21-Oct	Meadowbrook Local Park	newly planted trees	Rodeo	multiflora rose, wineberry, mugwort, porcelain berry	protect plantings	1:00 PM
26-Oct	North Branch Stream Valley Park Unit #3	wood and meadow areas	Garlon 3A	barberry, multiflora rose, autumn olive	restore habitat/protect ecosystem	8:00 AM
27-Oct	North Branch Stream Valley Park Unit #3	wood and meadow areas	Garlon 3A/Pathfinder II	barberry, multiflora rose, autumn olive	restore habitat/protect ecosystem	8:00 AM
28-Oct	Great Seneca Stream Valley Park Unit #2	meadow along Wayfarer Road	Garlon 3A	barberry, multiflora rose, honeysuckle, blackberry	restore habitat/protect ecosystem	7:45 AM
28-Oct	North Branch Stream Valley Park Unit #3	wood and meadow areas	Garlon 3A	barberry, multiflora rose, autumn olive	restore habitat/protect ecosystem	7:45 AM
1-Nov	Great Seneca Stream Valley Park Unit #2	meadow along Wayfarer Road	Garlon 3A	barberry, bittersweet, multiflora rose, autumn olive, etc.	restore habitat/protect ecosystem	7:30 AM
4-Nov	Great Seneca Stream Valley Park Unit #2	meadow along Wayfarer Road	Rodeo/Garlon 3A	barberry, bittersweet, tree of heaven, multiflora rose	restore habitat/protect ecosystem	7:30 AM
5-Nov	Great Seneca Stream Valley Park Unit #2	meadow along Wayfarer Road	Garlon 3A	bradford pear	restore habitat/protect ecosystem	8:15 AM
8-Nov	Great Seneca Stream Valley Park Unit #2	meadow along Wayfarer Road	Garlon 3A	autumn olive, bradford pear	restore habitat/protect ecosystem	8:00 AM
9-Nov	Great Seneca Stream Valley Park Unit #2	meadow along Wayfarer Road	Garlon 3A	autumn olive, bradford pear	restore habitat/protect ecosystem	7:45 AM
19-Nov	Rock Creek Stream Valley Park Unit #3	newly planted trees	Garlon 3A	porcelain berry, honeysuckle	protect plantings	7:45 AM
19-Nov	Meadowbrook Local Park	newly planted trees	Garlon 3A	english ivy, porcelain berry, honeysuckle	protect plantings	11:45 AM
19-Nov	Wheaton Regional Park	newly planted trees	Garlon 3A	privet, porcelain berry, japanese honeysuckle	restore habitat/protect ecosystem	9:15 AM
22-Nov	Red Door Store Historical/Cultural Park	meadow areas	Garlon 3A	bradford pear	restore habitat/protect ecosystem	7:00 AM
3-Dec	Rock Creek Regional Park	floodplain east of paved bike path	Rodeo	barberry, multiflora rose, wineberry, privet	restore habitat/protect ecosystem	7:30 AM
6-Dec	Maydale Conservation Park	floodplain east of main parking lot	Rodeo	barberry, bittersweet, multiflora rose, honeysuckle, etc.	restore habitat/protect ecosystem	7:40 AM
7-Dec	Maydale Conservation Park	floodplain east of main parking lot	Rodeo	barberry, bittersweet, multiflora rose, honeysuckle, etc.	restore habitat/protect ecosystem	8:00 AM
7-Dec	Black Hill Regional Park	floodplain along Hamilton Trail	Rodeo	barberry, bittersweet, multiflora rose, honeysuckle, etc.	restore habitat/protect ecosystem	7:30 AM
8-Dec	Black Hill Regional Park	floodplain along Hamilton Trail	Rodeo	barberry, bittersweet, multiflora rose, honeysuckle, etc.	restore habitat/protect ecosystem	7:15 AM
13-Dec	Rachel Carson Conservation Park	along sides of fern valley trail	Rodeo	barberry, multiflora rose, wineberry, porcelain berry	restore habitat/protect ecosystem	7:45 AM
14-Dec	Rachel Carson Conservation Park	along sides of fern valley trail	Rodeo	barberry, multiflora rose, wineberry, porcelain berry	restore habitat/protect ecosystem	7:00 AM
15-Dec	Rachel Carson Conservation Park	along sides of fern valley trail	Rodeo	barberry, multiflora rose, wineberry, porcelain berry	restore habitat/protect ecosystem	7:00 AM
16-Dec	Rachel Carson Conservation Park	along sides of fern valley trail	Rodeo	barberry, multiflora rose, wineberry, porcelain berry	restore habitat/protect ecosystem	7:00 AM
17-Dec	River Road Shale Barrens Conservation Park	hillside north of River Road	Rodeo/Pathfinder II	bittersweet, tree of heaven, autumn olive, honeysuckle, etc.	restore habitat/protect ecosystem	7:30 AM
18-Dec	River Road Shale Barrens Conservation Park	hillside north of River Road	Rodeo	bittersweet, tree of heaven, autumn olive, honeysuckle, etc.	restore habitat/protect ecosystem	7:30 AM
21-Dec	Little Bennett Regional Park	forest area by stream	Rodeo	barberry, bittersweet, multiflora rose	restore habitat/protect ecosystem	7:30 AM
22-Dec	Little Bennett Regional Park	forest area by stream	Rodeo	barberry, bittersweet, multiflora rose, wineberry	restore habitat/protect ecosystem	7:30 AM
27-Dec	Little Bennett Regional Park	forest area by stream	Rodeo	barberry, bittersweet, multiflora rose, wineberry	restore habitat/protect ecosystem	7:30 AM
28-Dec	Hoyles Mill Conservation Park	forest areas	Garlon 3A	barberry, bittersweet, multiflora rose, autumn olive, etc.	restore habitat/protect ecosystem	7:30 AM
29-Dec	Hoyles Mill Conservation Park	forest areas	Garlon 3A	barberry, bittersweet, multiflora rose, autumn olive, etc.	restore habitat/protect ecosystem	7:30 AM

Montgomery Parks  
2425 Reddie Drive  
Wheaton, Maryland 20902



[MontgomeryParks.org](http://MontgomeryParks.org)