

# MONTGOMERY PARKS



## Pesticide Use Report



# Overview

BILL 52-14 Pesticides-Notice Requirements-Cosmetic Pesticide Use Restrictions was enacted by the Montgomery County Council in October 2015 and adopted into County Code Sec. 33B Pesticide Use.

Montgomery Parks began implementing sections of the regulation on July 1, 2016.



Propane flame is one alternative method used to manage weed growth

## Montgomery Parks Pesticide Use Report - January 1 - June 30, 2021

As required under County Code Sec. 33B Pesticide Use, the Parks Department must submit semi-annual reports to the County Executive and County Council on or before January 15 and July 15 of each year.

The report is available to the public in a manner consistent with the Montgomery County Open Data Act and contains the following information:

1. Registered pesticide usage details, other than listed pesticide usage, in county parks during the preceding period, including:
  - common name of each registered pesticide used
  - location of each application
  - date and time of each application
  - reason for each use of a registered pesticide
2. Status of the pesticide-free park program implemented under the regulation

# Montgomery Parks Integrated Pest Management

The Department follows Integrated Pest Management (IPM) principles to steward resources and protect them from pests (weeds, insects, animals, and diseases) that may harm people or plants, impair function and deteriorate infrastructure.

IPM principles combine multiple strategies and techniques to manage pests such as mechanical removal of pests, cultural methods to improve soil and plant health, conserving and introducing beneficial biological controls, and using organic as well as conventional pesticides.

Montgomery Parks manages more than 37,072 acres of parkland including 424 parks, 276 playgrounds, 363 athletic fields, 299 tennis courts, 228 basketball courts, and many other amenities. Pesticides are only used when necessary to protect these amenities and park users. The Parks Department does not use pesticides for cosmetic purposes. Staff who apply pesticides and fertilizers are certified and registered with the Maryland Department of Agriculture. Montgomery Parks is committed to balancing the demand for recreation while protecting and conserving our valuable natural and cultural resources to meet the needs of current and future generations.



Park staff apply hot foam to manage weed growth on an athletic field warning track



Biological controls are released in the Brookside Gardens Conservatory to combat pests



Forestry cutter is used to mechanically remove non-native invasive plants

# Pesticide-Free Parks

Montgomery Parks manages 45 pesticide-free parks.

Pests in parks designated pesticide-free, are managed using alternative methods, such as hot foam, string trimming, mechanical weed removal, and products approved for use by Montgomery County Code 33B.



**Staff at Norwood, a pesticide free park manage skinned athletic field diamonds using the weed bar attachment to cut weed growth that could affect player safety.**

In 2016, Montgomery Parks began managing ten pesticide-free parks as part of a pilot program in compliance with the adoption of Montgomery County Code Chapter 33B. In September 2019, an additional 35 parks were added to the program, bringing the total number of parks now managed without pesticides to 45. The pesticide-free parks are in different regions of the county to give residents options. A list and map of the pesticide-free parks is included in the appendix and on the Montgomery Park's website <https://montgomeryparks.org/about/parks/pesticides/>

The pesticide-free parks are diverse and include local, urban, and neighborhood parks as well as neighborhood conservation areas. Amenities in these parks are equally diverse and include 20 basketball courts, 26 tennis courts, 11 athletic field diamonds, 12 athletic field rectangles, 9 picnic shelters and 31 playgrounds. Instead of synthetic pesticides to manage weeds, products approved for use by Montgomery County Code 33B are utilized along with alternative methods such as string trimming, hand tool removal, propane flaming, and hot foam treatments. The purpose of the pesticide-free park program is to observe parks managed without synthetic pesticides over time and determine the successes, challenges, and failures under this type of management. Pesticide-free parks are routinely inspected by staff to assess status of the amenities. A few parks have been removed from the program because pest problems could not be addressed by only using pesticide-free methods.

At Norwood Local Park, a pesticide free park in Bethesda with 11 amenities, staff report labor intensive management of weed growth. On the skinned infields of the athletic field diamonds, staff have been using the combination of the weed bar, scuffle hoe, sod cutter and propane flame equipment to remove weeds that affect player safety. This is labor intensive and has been a challenge that was increased due to field closure during COVID 19. When the fields were closed, there was no activity on the infields, which typically helps to disturb weed seed establishment. For the players benches, staff have been using scuffle hoes and the propane flame equipment to manage the weeds. Using methods other than synthetic pesticides to manage these amenities is proving effective but is very labor intensive for staff. In fact, alternative practices used to maintain the two athletic field diamonds at Norwood Local Park required an additional 68 labor hours from July 1, 2020 to June 10, 2021 to remove weeds that would affect player safety if left in place.



**Photos above are players bench area of Hoyles Mill Village Local Park, a pesticide free park: (Left) August 2020 unmanaged weed growth; (Right) June 2021 after hot foam application**

Hoyles Mill Village Local Park is a pesticide free park in Boyds with a basketball court, athletic field diamond and playground. Staff were unable to keep up with weed growth on the athletic field last year due to Covid-19 rotational staff schedules and lack of play due to field closures.

In June 2021, staff used hot foam treatments on the warning track and players bench area to keep weed growth down to protect player safety. Staff time treating weeds on the initial visit with hot foam took 16 labor hours. Staff will have to revisit the field and repeat the treatment two additional times for approximately 12 additional labor hours per visit. After each visit, additional staff time is required to scarify the warning track to remove the dead material. Comparatively, a synthetic pesticide treatment would take approximately 2-4 hours for one staff member per year to manage weed growth.



**Photos above are Hoyles Mill Village Local Park, pesticide free park: (Left) August 2020, warning track with weed growth emerging through fence line, (Right) June 2021, after a hot foam application**

# Alternative Maintenance Practices

Parks' Enterprise Asset Management System (EAM) tracks labor hours of staff managing weeds and other pests without the use of pesticides.

These alternative methods include biological control (using beneficial organisms to control a pest), cutting and/or digging weeds with equipment, additional field dragging, hot foam or hot water to kill weeds and other pests, additional field dragging beyond the maintenance standards, hand tool weeding, propane flaming, string-trimming, and weed suppression with mulch or landscape fabric.



Staff hand-pulling weed growth from a mulched parking lot island with a tree



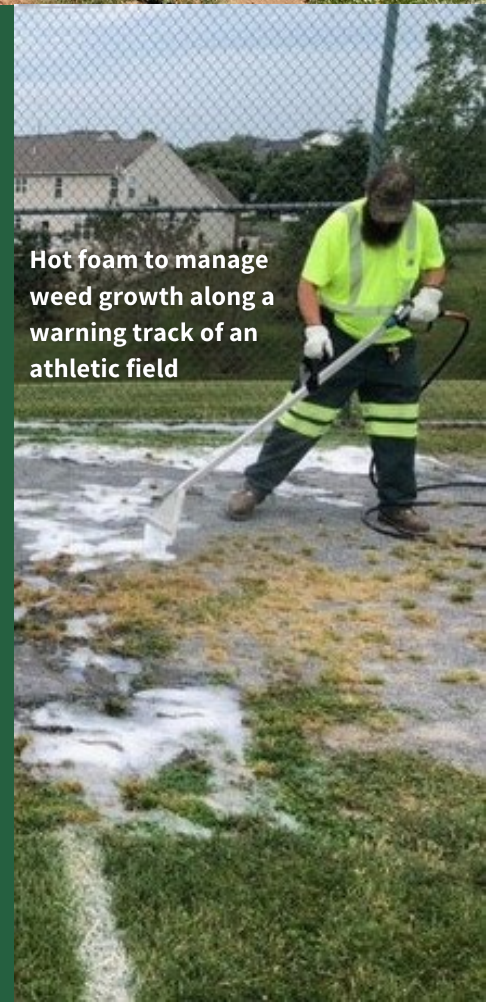
Staff using propane flame to suppress weed growth at an athletic field



Staff using hand-tools and equipment to remove unwanted vegetation from an athletic field infield

**Total labor hours of alternative methods to control pests for the period of January 1 to July 2, 2021 was: 6,224 hours at a labor cost of \$232,487**

<u>Alternative Method</u>	<u>Hours</u>	<u>Labor cost</u>
String trim	2,383	\$113,399
Hand tool weeding	2,264	\$67,101
Hot foam / Hot water	699	\$19,501
Cut/dig weeds with equipment	674	\$24,492
Propane flaming	85	\$3,378
Drag athletic field, additional	71	\$2,712
Playground Surface Grooming	38	\$1,468
Weed suppression	6	\$267
Biological control	4	169
<b>TOTAL</b>	<b>6,224</b>	<b>\$232,487</b>



Hot foam to manage weed growth along a warning track of an athletic field

# Pesticide-Free Playgrounds

Montgomery Parks maintains all 276 playgrounds without the use of pesticides.



Scuffle hoes (pictured) as well as garden hoes and hand rakes are commonly used hand tools for removing weeds in playground wood fiber surfacing

To maintain the Department's 276 playgrounds without the use of pesticides, playground maintenance crews report using hand tool weeding methods and hot foam equipment most often to manage weeds that infiltrate the wood fiber surfacing.

For this reporting period, January 1 to June 30, 2021, weed removal from the wood fiber surfacing of playgrounds resulted in the most labor-intensive alternative practices used, totaling 2,422 labor hours at a labor cost of \$66,541.

Hand tool weed removal is the most common alternative practice on playgrounds, used 68% of the time, totaling 1,657 labor hours at a labor cost of \$44,730 to remove weeds from the wood fiber surfacing.

Hot Foam is the second most common alternative practice used to maintain playgrounds, used 28% of the time, and totaling 639 labor hours at a labor cost of \$17,388. Hot Foam is being used to target poisonous Carolina horsenettle and other weeds that are extremely difficult to remove without pesticides on playgrounds.

The three hand tools relied on the most are the hard rake, regular garden hoe, and scuffle hoe. The scuffle hoe is particularly useful in wood fiber surfaces. You can push and pull it through the wood fiber or soil surfaces, getting it beneath weeds, and pulling them up or cutting them off as it is moved through the surface. Staff then rake through and clean up by hand. Also, hand weeding results in sustained weed suppression. Pulling by hand, gets more of the root system, instead of just cutting them off at the surface with the string trimmer, where they most likely will have grown back by the time we return.

Spring weeds encountered the most have been dandelions, chickweed, and bittercress. There are also the usual grasses; fescue and Bermuda, along with clover and wild strawberry, that infiltrate the playground surfaces from nearby grass areas in the parks.



**Several five-gallon buckets of weeds were removed from the wood fiber surfacing at the Olney Acres playground using hand tools**

At a playground in Olney Acres Neighborhood Park, hand weeding using a scuffle hoe was used to remove dandelions, chickweed, and grasses. Several five-gallon buckets of weeds were removed from the surface.

This past fall and winter staff diligently worked to add 9,088 cubic yards of engineered wood-fiber surfacing to 181 playgrounds.

That's roughly equivalent to 1,136 dump truck loads of material!

The cost of the wood fiber material is \$178,527 and was spread on surfacing at playgrounds the equivalent to 51 football fields.

New wood fiber added to playgrounds at the proper depth helps suppress weed growth, in addition to its main function of providing a cushioned play surface.

This work took 3,563 labor hours to accomplish at a cost of \$125,250 in labor.



**Wood fiber added to playgrounds at the proper depth helps suppress weed growth. Staff spent 3,563 labor hours spreading wood fiber on playgrounds**





# Integrated Pest Management on Athletic Fields



Staff operate versatile athletic field maintenance equipment on a warning track to remove weed growth emerging through a fence line.

Staff in all management areas are investing in additional athletic field maintenance equipment for vegetation control on skinned areas such as the warning track and infields.

The equipment we are using is more versatile than past athletic field maintenance equipment and has attachments that perform multiple functions to assist in removing weeds without pesticides. Attachments include rakes, weed bar to cut weeds, athletic field groomer/renovator. Trainings were held for staff to familiarize them with the equipment.

Staff continue to use alternative products to synthetic pesticides including Fiesta and Corn Gluten on athletic field rectangles with mixed results. A virtual training was held in May to provide additional information to registered and certified pesticide applicators on alternative products available for use.

During this reporting period, staff used alternative practices to manage weed growth that affects player safety on athletic fields. Most used alternative methods to remove weed growth were cutting and digging weeds with equipment, which totaled 529 labor hours at a labor cost of \$19,739. Hand tool weed removal was second totaling 322 labor hours and a labor cost of \$11,037.46.



Staff training for use of new athletic field equipment

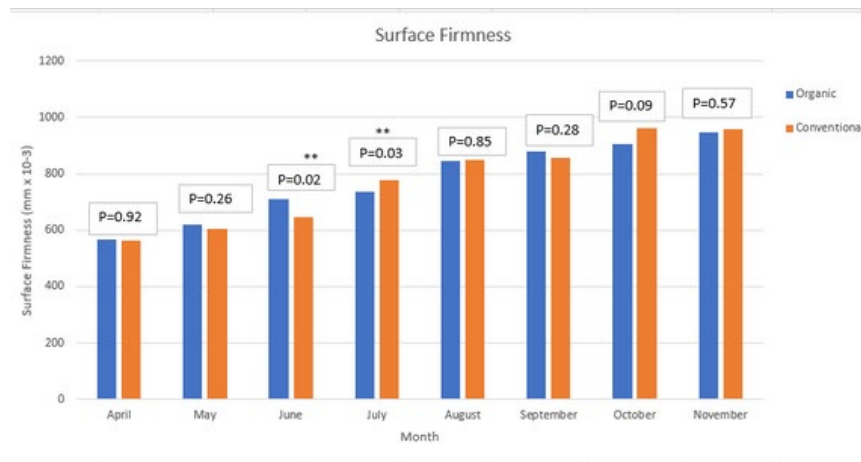
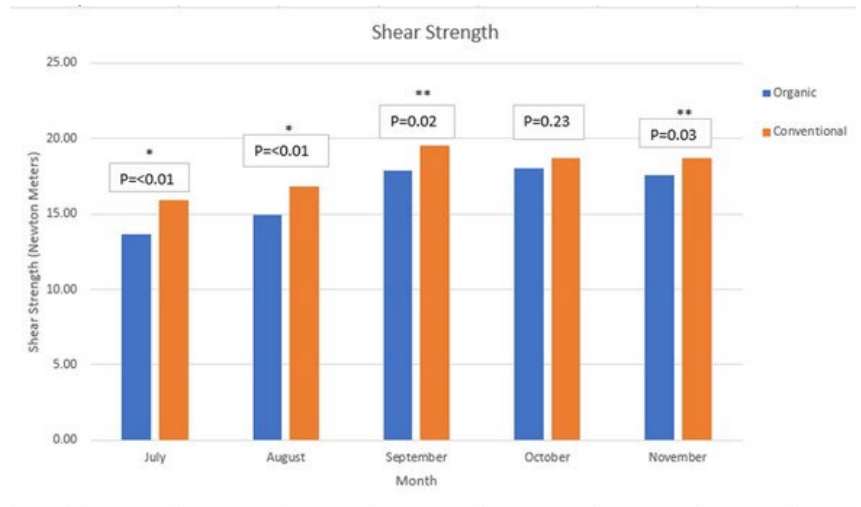
# Athletic Field Pilot

In October 2019, Montgomery Parks began a three-year athletic field pilot program to learn about the impacts and the best practices for maintaining athletic fields using organic turf management techniques. Two bermudagrass fields at Laytonia Recreational Park were selected for the pilot. This location provides an excellent comparison of field maintenance using integrated pest management strategies vs. organic methods. The pilot is being implemented by a contractor. A team of turfgrass experts from the University of Maryland is overseeing program implementation and performing independent assessments for consistency and field quality.

The organic pilot program is now moving into year two, however 2020 led to the unanticipated lack of play on the fields due to COVID-19 regulations. This removed over five months of play and wear on the fields allowing both fields to recover from any wear they had received the previous year. When sports resumed in the fall of 2020, play was limited and permitted hours were lower than normal.

The University of Maryland did continue with their study and have provided data on two key metrics, surface firmness and shear strength. The surface firmness which has a direct correlation to player safety, measures how much impact the surface can take from a falling hemispherical object. The two fields were very consistent regarding surface firmness with each other and did not show any clear difference. The second matrix was shear strength, which measures the amount of side pressure the turfgrass can take before it shears at the root crowns. The field managed with conventional methods showed greater results in the shear strength matrix, but the margins were minimal and additional study is needed.

In summary, 2020 allowed both fields to grow without any play or traffic which resets the organic pilot to year zero since both fields were unused. As sports are opened and play has resumed, additional test results and data are expected at the end of 2021.



# Informing the Public



Montgomery Parks provides up-to-date information about the Department's Pest Management Program to the public primarily through a dedicated webpage, social media, press releases, and customer service department.

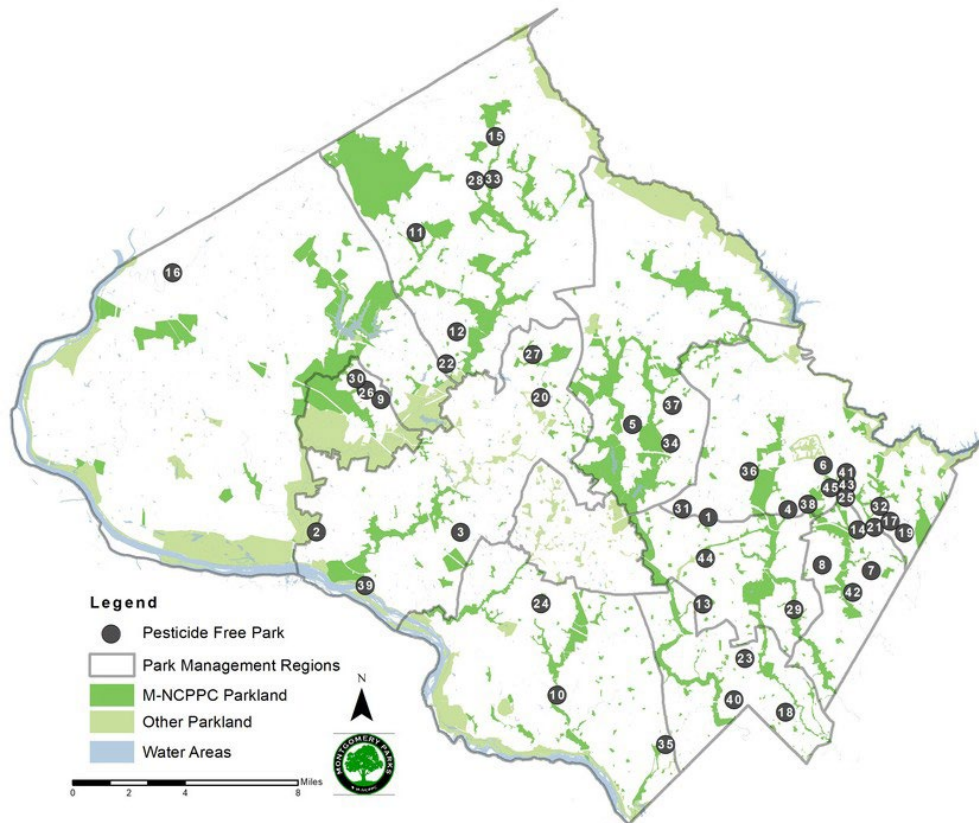
The dedicated webpage <https://montgomeryparks.org/about/parks/pesticides/> includes:

- ◆ Overview of Montgomery Parks' Pesticide Reduction and IPM Program
- ◆ Frequently asked questions and answers
- ◆ Pesticide use reports
- ◆ Pesticide-free parks list and location map
- ◆ Notice of scheduled pesticide applications including the location, date, time, product and reason for the application
- ◆ Contact information for further inquiries

## FY22 Budget

The Montgomery County Council approved additional funding in the FY22 budget to reduce reliance on synthetic pesticides to manage pests on parkland. The funding will provide two full-time Park Maintenance Workers to operate a forestry cutter for mechanical vegetation removal and a hot foam machine, which serves as a herbicide-free solution for controlling unwanted vegetation at playgrounds and other park amenities. Adding dedicated staffing to use these machines will lead to familiarity with the equipment and knowledge of field conditions and weed identification which creates work program efficiencies and less down time for the equipment. Since the hot foam machine is less effective during freezing weather, in late fall to early spring, staff in these new positions will work on non-native invasive (NNI) plant control and meadow mowing using the forestry cutter machine, that mechanically removes unwanted vegetation.

# Appendix: Map and List of Pesticide-Free Parks



## Pesticide Free Parks

- |  |   |
|--|---|
| 1 Aquarius Local Park                  | 24 Highland Stone Neighborhood Park       |
| 2 Berryville Road NCA                  | 25 Hopefield Neighborhood Park            |
| 3 Big Pines Local Park                 | 26 Hoyles Mill Village Local Park         |
| 4 Bonifant NCA                         | 27 Hunters Woods NCA                      |
| 5 Bowie Mill Local Park                | 28 John Haines Neighborhood Park          |
| 6 Browns Corner NCA                    | 29 Kemp Mill Estates Local Park           |
| 7 Calverton NCA                        | 30 King's Crossing Local Park             |
| 8 Cannon Road Local Park               | 31 Manor Park NCA                         |
| 9 Cedar Creek Local Park               | 32 Miles Road NCA                         |
| 10 Cindy Lane Neighborhood Park        | 33 Moyer Road Local Park                  |
| 11 Clarksburg Village North Local Park | 34 Norbeck Meadows Neighborhood Park      |
| 12 Clearspring Local Park              | 35 Norwood Local Park                     |
| 13 College View Neighborhood Park      | 36 Norwood Village NCA                    |
| 14 Countryside Neighborhood Park       | 37 Olney Acres Neighborhood Park          |
| 15 Damascus Neighborhood Park          | 38 Peach Orchard NCA                      |
| 16 Dickerson Local Park                | 39 Pennyfield Lock NCA                    |
| 17 Duvall Road NCA                     | 40 Rosemary Hills-Lyttonsville Local Park |
| 18 East Silver Spring Urban Park       | 41 Spencerville Local Park                |
| 19 Edgewood Neighborhood Park          | 42 Stonehedge Local Park                  |
| 20 Emory Grove Hills NCA               | 43 Twinponds NCA                          |
| 21 Fairdale Road NCA                   | 44 Valleywood Neighborhood Park           |
| 22 Fox Chapel Neighborhood Park        | 45 Wembrough Neighborhood Park            |

**Products Applied by Montgomery Parks Staff from January 1, 2021 - June 30, 2021**

<b>Date</b>	<b>Location</b>	<b>Treated</b>	<b>Product</b>	<b>Problem</b>	<b>Reason for treatment</b>	<b>Start time</b>
12-Jan	Brookside Gardens	Conservatory	Ultra Pure Oil	scale, mealybug	protect plantings	1:30 PM
9-Feb	Brookside Gardens	Conservatory	Ultra Pure Oil	scale	protect plantings	1:15 PM
10-Feb	Brookside Gardens	Conservatory	Xpire WG, Enstar	thrips, whitefly	protect plantings	11:00 AM
17-Feb	Brookside Gardens	Conservatory	Endeavor, Conserve,	thrips, whitefly	protect plantings	10:30 AM
24-Feb	Brookside Gardens	Conservatory	Ultra Pure Oil	scale, mealybug	protect plantings	10:00 AM
4-Mar	Brookside Gardens	Conservatory	Safari 20 SG, Mainspring,	thrips, whitefly	protect plantings	11:15 AM
10-Mar	Ridge Road Recreational Park	fields 1, 2, 3, 4, 5 turfgrass	Lebanon Pro 13-0-4	broadleaf weeds	support plant/turf health	8:00 AM
11-Mar	Brookside Gardens	Conservatory	Pure Spray Green	aphids, mealybug, scale, spider mites	protect plantings	12:00 PM
17-Mar	Brookside Gardens	Conservatory	Safari, Mainspring, Enstar	thrips, whitefly	protect plantings	10:00 AM
17-Mar	Olney Manor Recreational Park	fields 1, 2, 4, 5 turfgrass	Prodiamine 65 WDG	broadleaf weeds, annual grasses	player safety	7:00 AM
19-Mar	Brookside Gardens	Fragrance, Trial Gardens	Deer Stopper	damage due to deer	protect plantings	1:00 PM
22-Mar	South Germantown Recreational Park	tree rings and landscape beds	Cheetah Pro	broadleaf weeds, invasive weeds	protect plantings	8:00 AM
25-Mar	Brookside Gardens	Fragrance Gardens	Deer Stopper	damage due to deer	protect plantings	1:30 PM
25-Mar	Woodlawn Manor Cultural Park	landscape beds	Snapshot	broadleaf weeds, annual grasses	protect plantings	7:00 AM
26-Mar	Cabin John Athletic Area	field 6 turfgrass	Speedzone, Tribute Total	chickweed, poa annua	player safety	7:30 AM
29-Mar	Bowie Mill Local Park	fields 1, 2 turfgrass	Safer Play 10-0-2	crabgrass	player safety	10:30 AM
29-Mar	Cherrywood Local Park	field turfgrass	Safer Play 10-0-2	crabgrass	player safety	9:00 AM
29-Mar	Flower Valley Neighborhood Park	field turfgrass	Safer Play 10-0-2	crabgrass	player safety	6:30 AM
29-Mar	Fountain Hills Local Park	fields 1, 2 turfgrass	Safer Play 10-0-2	crabgrass	player safety	9:30 AM
29-Mar	Laytonsville Local Park	fields 1, 2 turfgrass	Safer Play 10-0-2	crabgrass	player safety	8:00 AM
29-Mar	Mount Zion Local Park	field 1 turfgrass	Safer Play 10-0-2	crabgrass	player safety	7:30 AM
29-Mar	South Gunner's Branch Local Park	fields 1, cricket turfgrass	Safer Play 10-0-2	crabgrass	player safety	11:00 AM
29-Mar	Waring Station Local Park	field 1 turfgrass	Safer Play 10-0-2	crabgrass	player safety	10:30 AM
29-Mar	Waring Station Local Park	backfence w/out mowstrip	Three-Way	garlic mustard, ivy, honeysuckle, prickly lettuce	protect amenities/infrastructure	12:30 PM
30-Mar	Avenel Local Park	fields 2, 3 turfgrass	Safer Play 10-0-2	crabgrass	player safety	7:30 AM
30-Mar	Cabin John Athletic Area	fields 2, 3, 4, 5, 6 warning tracks	Aceta Force Pro, Surflan	broadleaf weeds, invasive weeds	meet standards of play, player safety	7:00 AM
30-Mar	Clarkmont Local Park	field turfgrass	Safer Play 10-0-2	crabgrass	player safety	12:00 PM
30-Mar	Gunner's Lake Local Park	fields 1, 2 turfgrass	Safer Play 10-0-2	crabgrass	player safety	11:30 AM
30-Mar	Leaman Local Park	fields 1, 2 turfgrass	Safer Play 10-0-2	crabgrass	player safety	10:30 AM
30-Mar	Shirley Povich Field Property	field turfgrass	Pendulum WDG	crabgrass, goosegrass	support turf health	7:00 AM
30-Mar	Waters Landing Local Park	field 1 turfgrass	Safer Play 10-0-2	crabgrass	player safety	12:30 PM
30-Mar	Wheaton Athletic Area	fields 2, 5 turfgrass	Safer Play 10-0-2	crabgrass	player safety	8:30 AM
31-Mar	Brookside Gardens	Gude Garden, Visitor Ctr, bulblawn turfgrass	Stonewall 13-0-0	broadleaf weeds	support plant/turf health	8:00 AM
31-Mar	Wheaton Athletic Area	fields 1, 3, 4, 6 turfgrass	Safer Play 10-0-2	crabgrass	player safety	6:45 AM
6-Apr	Brookside Gardens	Rose Garden	Chlorothalonil 720 SFT	Black spot	support plant health	7:00 AM
7-Apr	Olney Manor Recreational Park	fields 3, 4, 5 turfgrass	Cool Power	broadleaf weeds	meet standards of play, player safety	7:30 AM
8-Apr	Jessup Blair Local Park	tree mulch rings	Snapshot	broadleaf weeds, annual grasses	protect plantings	11:45 AM
8-Apr	Northwest Branch Recreational Park	fields 1, 3, 5 lines	T-Nex	turf growth	meet standards of play	8:30 AM
8-Apr	Olney Manor Recreational Park	fields 4, 5 lines	T-Nex	turf growth	meet standards of play	7:00 AM
8-Apr	South Germantown Recreational Park	fields 23, 24 turfgrass	Oxadiazon 2G	broadleaf weeds, chickweed, poa annua	support plant/turf health	7:00 AM
8-Apr	Wheaton Regional Park	tree mulch rings	Snapshot	broadleaf weeds, annual grasses	protect plantings	10:15 AM
9-Apr	Fairland Recreational Park	field 2 turfgrass	Cool Power	broadleaf weeds	meet standards of play, player safety	7:30 AM
9-Apr	South Germantown Recreational Park	fields 23, 24 turfgrass	Quinclorac 75 DF	chickweed, ryegrass	support plant/turf health	10:00 AM
12-Apr	East Norbeck Local Park	fields 1, 2, 3 lines	T-Nex	turf growth	meet standards of play	10:15 AM
12-Apr	Ednor Local Park	fields 1, 2 lines	T-Nex	turf growth	meet standards of play	9:30 AM
12-Apr	Greenwood Local Park	fields 1, 2 lines	T-Nex	turf growth	meet standards of play	8:45 AM
12-Apr	Layhill Local Park	fields 1, 2, 4 lines	T-Nex	turf growth	meet standards of play	7:30 AM
12-Apr	Manor Oaks Local Park	fields 1, 2, 3 lines	T-Nex	turf growth	meet standards of play	12:00 PM
12-Apr	Olney Manor Recreational Park	landscape beds	Snapshot	broadleaf weeds, annual grasses	protect plantings	7:00 AM
12-Apr	Southeast Olney Local Park	fields 1, 2 lines	T-Nex	turf growth	meet standards of play	1:30 PM
13-Apr	Brookside Gardens	Rose Garden, Cherry Trees	Armada	Black spot, Leaf spot	support plant health	7:15 AM
13-Apr	Burtonsville Local Park	fields 1, 2 lines	T-Nex	turf growth	meet standards of play	10:45 AM
13-Apr	Cloverly Local Park	fields 1, 2 lines	T-Nex	turf growth	meet standards of play	12:00 PM
13-Apr	Columbia Local Park	fields 1, 2, 3 lines	T-Nex	turf growth	meet standards of play	12:45 PM
13-Apr	Cross Creek Club Local Park	field lines	T-Nex	turf growth	meet standards of play	7:00 AM
13-Apr	Fairland Recreational Park	field 2 turfgrass	Prodiamine 65 WDG	broadleaf weeds, annual grasses	player safety	7:00 AM
13-Apr	Northwest Branch Recreational Park	field 2 lines	T-Nex	turf growth	meet standards of play	7:00 AM
13-Apr	Stonegate Local Park	field lines	T-Nex	turf growth	meet standards of play	7:45 AM
14-Apr	Olney Manor Recreational Park	maintenance yard fence/line, landscape bed	Glyphosate, Triclopyr Ester	burnweed, english ivy, poison ivy, thistle	protect amenities/infrastructure	9:00 AM
15-Apr	Darby Historical/Cultural Park	landscape beds	Prosecutor Pro	annual grasses, weeds	protect plantings	9:00 AM
15-Apr	Olney Manor Recreational Park	field 3 turfgrass	Prodiamine 65 WDG	broadleaf weeds, annual grasses	player safety	11:15 AM
16-Apr	Brookside Gardens	Gude Garden, Reflection Terrace	Phyton 27	Dothistroma	protect plantings	8:30 AM
16-Apr	Northwest Branch Recreational Park	field 5 turfgrass	Cool Power	broadleaf weeds	meet standards of play, player safety	7:30 AM
19-Apr	Fountain Hills Local Park	field 1 turfgrass	Safer Play 10-0-2	crabgrass	player safety	12:00 PM
19-Apr	Owens Local Park	field warning tracks	Prosecutor Pro	clover, bittercress, ground ivy, poa annua	meet standards of play	7:30 AM
20-Apr	South Germantown Recreational Park	tree rings and landscape beds	Cheetah Pro	broadleaf weeds, invasive weeds	protect plantings	8:00 AM
21-Apr	Camp Seneca Special Park	landscape beds	Prosecutor Pro	burweed, chickweed, geranium, pliantain, thistle	protect plantings	11:00 AM
22-Apr	Black Hill Regional Park	tree rings and landscape beds	Three-Way	chickweed, thistle, wild garlic	protect plantings	12:30 PM
22-Apr	Brookside Gardens	Conservatory	Pure Spray Green	mealybug, scale	protect plantings	1:30 PM
22-Apr	Germantown Town Center Urban Park	landscape beds, stone walkways	Three-Way	carolina nettle, morning glory, virginia creeper	protect amenities/infrastructure, protect p	10:00 AM
22-Apr	South Germantown Recreational Park	tree rings and landscape beds	Cheetah Pro	broadleaf weeds, invasive weeds	protect plantings	6:30 AM
23-Apr	Brookside Gardens	Gude Garden	Aquaneat	weeds near water	protect plantings	10:00 AM
23-Apr	South Germantown Recreational Park	tree rings and landscape beds	Cheetah Pro	broadleaf weeds, invasive weeds	protect plantings	6:30 AM
26-Apr	Bowie Mill Local Park	fields 1, 2 turfgrass	Safer Play 10-0-2	crabgrass	player safety	1:00 PM
26-Apr	Brookside Gardens	Gude Garden, Reflection Terrace	Zyban	Dothistroma	protect plantings	8:00 AM
26-Apr	Cherrywood Local Park	field turfgrass	Safer Play 10-0-2	crabgrass	player safety	2:00 PM
26-Apr	Clarkmont Local Park	tree rings and landscape beds	Prosecutor Pro	clover, grasses, prickly lettuce, thistle	protect plantings	7:00 AM
26-Apr	Flower Valley Neighborhood Park	field turfgrass	Safer Play 10-0-2	crabgrass	player safety	9:30 AM
26-Apr	Laytonsville Local Park	fields 1, 2 turfgrass	Safer Play 10-0-2	crabgrass	player safety	8:30 AM
26-Apr	Mount Zion Local Park	field 1 turfgrass	Safer Play 10-0-2	crabgrass	player safety	6:30 AM
26-Apr	South Germantown Recreational Park	fields 23, 24 turfgrass	Revolver	poa annua, other weeds	meet standards of play, plant or turf health	10:00 AM
26-Apr	Sundown Local Park	fields 1, 2 turfgrass	Safer Play 10-0-2	crabgrass	player safety	7:30 AM
26-Apr	Waters Landing Local Park	field 2 turfgrass	Safer Play 10-0-2	crabgrass	player safety	12:30 PM
26-Apr	Wheaton Athletic Area	fields 2, 5 turfgrass	Safer Play 10-0-2	crabgrass	player safety	6:30 AM
27-Apr	Avenel Local Park	fields 2, 3, 4 turfgrass	Safer Play 10-0-2	crabgrass	player safety	8:30 AM
27-Apr	Fountain Hills Local Park	field 1 warning tracks	Prosecutor Pro	clover, bittercress, ground ivy, poa annua	meet standards of play	11:00 AM
27-Apr	Fountain Hills Local Park	field 2 turfgrass	Safer Play 10-0-2	crabgrass	player safety	10:00 AM
27-Apr	Gunner's Branch Local Park	cricket field turfgrass	Safer Play 10-0-2	crabgrass	player safety	8:00 AM
27-Apr	Leaman Local Park	field 2 turfgrass	Safer Play 10-0-2	crabgrass	player safety	11:00 AM
27-Apr	South Germantown Recreational Park	fields 23, 24 turfgrass	Revolver	poa annua, other weeds	meet standards of play, plant or turf health	8:00 AM
27-Apr	South Gunner's Branch Local Park	field 1 turfgrass	Safer Play 10-0-2	crabgrass	player safety	9:00 AM
27-Apr	Wheaton Athletic Area	field 6 all grass areas	Safer Play 10-0-2	crabgrass	player safety	8:00 AM
28-Apr	Black Hill Regional Park	tree rings and landscape beds	Three-Way	chickweed, thistle, wild garlic	protect plantings	6:30 AM
28-Apr	South Germantown Recreational Park	fields C, D, E, F turfgrass	Escalade 2	chickweed, clover, dandelions	support plant/turf health	7:00 AM
29-Apr	Wheaton Athletic Area	fields 1, 3, 4 turfgrass	Safer Play 10-0-2	crabgrass	player safety	7:30 AM
30-Apr	South Germantown Recreational Park	fields C, D, E, F, cricket turfgrass	Acelepryn	grub damage	support plant/turf health	7:00 AM
4-May	Brookside Gardens	Rose Garden, Cherry Trees	Armada, Distance	Black spot	support plant health	7:45 AM
4-May	Brookside Gardens	Rose Garden, beds around Conservatory	Halo 75 WDG Select	nutsedge	protect plantings	9:00 AM
4-May	Clarkmont Local Park	field turfgrass	Safer Play 10-0-2	crabgrass	player safety	10:00 AM
5-May	Olney Manor Recreational Park	fields 1, 2 turfgrass	Cool Power	broadleaf weeds	meet standards of play, player safety	7:30 AM
5-May	South Germantown Recreational Park	field turfgrass (cricket)	Escalade 2	broadleaf weeds	support plant/turf health	7:00 AM
6-May	Brookside Gardens	Gude Garden, Reflection Terrace	Chlorothalonil 720 SFT	Dothistroma	protect plantings	8:15 AM
6-May	Northwest Branch Recreational Park	fields 1, 2, 3 turfgrass	Cool Power	broadleaf weeds	meet standards of play, player safety	9:00 AM
7-May	Fairland Recreational Park	fields 1, 2, 3 lines	T-Nex	turf growth	meet standards of play	1:30 PM
7-May	Northwest Branch Recreational Park	fields 1, 2, 3, 4, 5 turfgrass	Prodiamine 65 WDG	broadleaf weeds, annual grasses	player safety	7:00 AM
11-May	Brookside Gardens	Rose Garden	Chlorothalonil 720 SFT	Black spot	support plant health	7:15 AM
11-May	Brookside Gardens	Rose Garden, walkway crevices	Glyphosate	broadleaf weeds	protect infrastructure	8:30 AM
11-May	Cabin John Athletic Area	field 2 turfgrass	Monument 75WG	ryegrass, poa annua	support turf health	8:00 AM
11-May	Olney Manor Recreational Park	fields 1, 2, 3 lines	T-Nex	turf growth	meet standards of play	6:30 AM
11-May	Shirley Povich Field Property	field turfgrass	Monument 75WG	ryegrass, poa annua	support turf health	6:30 AM
12-May	Brookside Gardens	beds around Conservatory	Prosecutor Pro	broadleaf weeds	protect plantings	8:00 AM
12-May	Cabin John Athletic Area	fields 5, 6 turfgrass	Primo Maxx	turf growth	support turf health	6:45 AM
13-May	South Germantown Recreational Park	tree rings and landscape beds	Cheetah Pro	broadleaf weeds, invasive weeds	protect amenities/infrastructure	8:00 AM
14-May	Brookside Gardens	Gude Garden, Reflection Terrace	Phyton 27	Dothistroma	protect plantings	8:30 AM
14-May	Brookside Gardens	Gude Garden, Viburnum Garden	Prosecutor Pro	broadleaf weeds	protect plantings	10:00 AM
17-May	Germantown Square Urban Park	landscape beds, stone wall, tree rings	Prosecutor Pro	aster, mile-a-minute	protect amenities/infrastructure, protect p	8:30 AM
17-May	Germantown Town Center Urban Park	landscape beds, stone walkways	Three-Way	chickweed, ground ivy, thistle	protect amenities/infrastructure, protect p	7:00 AM
17-May	South Germantown Recreational Park	tree rings and landscape beds	Cheetah Pro	broadleaf weeds, invasive weeds	protect plantings	6:30 AM
18-May	Brookside Gardens	Rose Garden, Perennial Garden	Myclobutanil 20EWT&O	Black spot, shot hole disease	support plant health	7:00 AM
18-May	Waring Station Local Park	field 1 turfgrass	Safer Play 10-0-2	crabgrass	player safety	11:30 AM
20-May	Olney Manor Recreational Park	fields 1, 2, 3, 4, 5 players bench area	Momentum 4-Score	chickweed, dandelion, pineappleweed	protect amenities/infrastructure	7:15 AM
20-May	Woodlawn Manor Cultural Park	landscape beds	Glyphosate, Triclopyr Ester	burnweed, dandelion, thistle	protect plantings	10:00 AM
21-May	Brookside Gardens	Gude Garden, Reflection Terrace	Zyban	Dothistroma	protect plantings	9:00 AM
25-May	Brookside Gardens	Rose Garden	Twosome, Distance	Black spot, midges, chewing insects	support plant health	7:00 AM
25-May	South Germantown Recreational Park	tree rings and landscape beds	Cheetah Pro	broadleaf weeds, invasive weeds	protect plantings	7:00 AM
26-May	Cabin John Athletic Area	fields 2, 5, 6 turfgrass	Primo Maxx	turf growth	support turf health	6:30 AM
26-May	Shirley Povich Field Property	field turfgrass	Primo Maxx	turf growth	support turf health	8:00 AM
26-May	South Germantown Recreational Park	tree rings and landscape beds	Cheetah Pro	broadleaf weeds, invasive weeds	protect plantings	7:00 AM
27-May	Brookside Gardens	Gude Garden, Reflection Terrace	Chlorothalonil 720 SFT	Dothistroma	protect plantings	8:20 AM
27-May	South Germantown Recreational Park	tree rings and landscape beds	Cheetah Pro	broadleaf weeds, invasive weeds	protect plantings	7:00 AM
28-May	Brookside Gardens	Conservatory	Ultra Pure Oil	mealy bug	protect plantings	4:45 PM
28-May	South Germantown Recreational Park	tree rings and landscape beds	Cheetah Pro	broadleaf weeds, invasive weeds	protect plantings	7:00 AM
1-Jun	Brookside Gardens	Rose Garden	Armada	Black spot	support plant health	7:00 AM

Date	Location	Treated	Product	Problem	Reason for treatment	Start time
2-Jun	Ellsworth Urban Park	tree mulch rings	Prosecutor Pro	broadleaf weeds	protect plantings	10:00 AM
7-Jun	Clarkmont Local Park	landscape beds	Prosecutor Pro	carpetweed, clover, grasses, thistle	prevent harm, protect plantings	8:30 AM
7-Jun	Fairland Recreational Park	fields 1, 2, 3 lines	T-Nex	turf growth	meet standards of play	12:00 PM
7-Jun	Gunner's Lake Local Park	tree mulch rings	Element 3A	poison ivy, bittersweet, woody vines	prevent harm, protect plantings	6:30 AM
7-Jun	Northwest Branch Recreational Park	fields 1, 2, 3, 5 lines	T-Nex	turf growth	meet standards of play	7:00 AM
7-Jun	Waters House Special Park	around building	Round Up Pro Max	broadleaf weeds, invasive weeds	protect amenities/infrastructure	8:00 AM
8-Jun	Brookside Gardens	Rose Garden	Myclobutanil 20EWT&O	Black spot	support plant health	6:00 AM
8-Jun	Cloverly Local Park	fields 1, 2 lines	T-Nex	turf growth	meet standards of play	12:00 PM
8-Jun	East Norbeck Local Park	fields 1, 2, 3 lines	T-Nex	turf growth	meet standards of play	7:00 AM
8-Jun	Layhill Local Park	fields 1, 2, 4 lines	T-Nex	turf growth	meet standards of play	8:45 AM
8-Jun	Stonegate Local Park	field 1 lines	T-Nex	turf growth	meet standards of play	10:30 AM
9-Jun	Brookside Gardens	Gude Garden, Reflection Terrace	Phyton 27	Dothistroma	protect plantings	9:00 AM
9-Jun	Burtonsville Local Park	fields 1, 2 lines	T-Nex	turf growth	meet standards of play	1:30 PM
9-Jun	Cabin John Athletic Area	fields 2, 5, 6 turfgrass	Primo Maxx	slow growth	support turf health	7:30 AM
9-Jun	Cross Creek Club Local Park	field 1 lines	T-Nex	turf growth	meet standards of play	11:45 AM
9-Jun	Greenwood Local Park	fields 1, 2 lines	T-Nex	turf growth	meet standards of play	9:30 AM
9-Jun	Manor Oaks Local Park	fields 1, 2, 3 lines	T-Nex	turf growth	meet standards of play	6:00 AM
9-Jun	Olney Manor Recreational Park	fields 1, 2, 3, 4, 5 turfgrass	T-Nex	turf growth	meet standards of play	10:15 AM
9-Jun	Shirley Povich Field Property	field turfgrass	Primo Maxx	slow growth	support turf health	6:30 AM
9-Jun	Southeast Olney Local Park	fields 1, 2 lines	T-Nex	turf growth	meet standards of play	8:00 AM
10-Jun	Brookside Gardens	Rose Garden, beds around Conservatory	Halo 75 WDG Select	nutsedge	protect plantings	9:00 AM
10-Jun	Columbia Local Park	fields 1, 2, 3 lines	T-Nex	turf growth	meet standards of play	7:00 AM
10-Jun	Ednor Local Park	fields 1, 2 lines	T-Nex	turf growth	meet standards of play	8:30 AM
14-Jun	Laytonia Recreational Park	field 1 turfgrass	Fiesta	clover, dandelion	player safety	6:30 AM
14-Jun	South Germantown Recreational Park	tree rings and landscape beds	Cheetah Pro	broadleaf weeds, invasive weeds	protect plantings	7:00 AM
14-Jun	Woodstock Equestrian Park	fenceline	Prosecutor Pro	garlic mustard, ivy, prickly lettuce, stilt grass	protect amenities/infrastructure	8:00 AM
15-Jun	Brookside Gardens	Rose Garden	Twosome	Black spot	support plant health	7:00 AM
15-Jun	Germantown Town Center Urban Park	landscape beds	Prosecutor Pro	ivy, grasses, vines	protect plantings	6:30 AM
15-Jun	South Germantown Recreational Park	tree rings and landscape beds	Cheetah Pro	broadleaf weeds, invasive weeds	protect plantings	7:00 AM
17-Jun	Germantown Town Center Urban Park	landscape beds	Prosecutor Pro	porcelain berry, grasses, mile a minute, thistle	protect plantings	7:00 AM
17-Jun	Olney Manor Recreational Park	cracks, curbs, sidewalk	Glyphosate Plus	annual grasses, weeds	protect amenities	6:00 AM
17-Jun	South Germantown Recreational Park	tree rings and landscape beds	Cheetah Pro	broadleaf weeds, invasive weeds	protect amenities/infrastructure	7:00 AM
18-Jun	Brookside Gardens	Gude Garden, Reflection Terrace	Zyban	Dothistroma	protect plantings	8:00 AM
18-Jun	Germantown Town Center Urban Park	landscape beds	Three-Way	broadleaf weeds	protect plantings	12:45 PM
18-Jun	Waring Station Local Park	fenceline	Fusilade	grasses	protect amenities/infrastructure	9:00 AM
18-Jun	Wheaton Athletic Area	fields 2, 3, 4, 5, 6	Fiesta	broadleaf plantain, clover, dandelion	player safety, support turf health	6:30 AM
18-Jun	Wheaton Athletic Area	field 1	Revolver, Drive XLR8	bluegrass, plantain, clover, ryegrass, fescue	player safety, support turf health	6:00 AM
18-Jun	Woodstock Equestrian Park	fenceline	Prosecutor Pro	bittersweet, ground ivy	protect amenities/infrastructure	7:30 AM
23-Jun	Brookside Gardens	Rose Garden	Armada	Black spot	support plant health	6:40 AM
23-Jun	Cabin John Athletic Area	fields 5, 6 turfgrass	Primo Maxx	slow growth	support turf health	6:30 AM
24-Jun	Cabin John Athletic Area	fields 2, Povich turfgrass	Primo Maxx	slow growth	support turf health	6:30 AM
24-Jun	Camp Seneca Special Park	landscape beds	Prosecutor Pro	crabgrass, japanese stilt grass, mile-a-minute	protect plantings	7:00 AM
24-Jun	Woodstock Equestrian Park	barn area	Element 3A	tree of heaven	protect amenities/infrastructure	9:30 AM
25-Jun	Brookside Gardens	Reflection Terrace, Gude Garden	Chlorothalonil 720 SFT	fungal disease	protect plantings	8:30 AM
25-Jun	Brookside Gardens	Parking Garden	Round Up Pro	bermuda grass, nutsedge, hognut	protect plantings	8:30 AM
25-Jun	Wheaton Local Park	American Elm tree	Propizol	fungal disease	protect plantings	8:30 AM
29-Jun	Brookside Gardens	Rose Garden	Myclobutanil 20EWT&O	Black spot, shot hole disease on Cherries	support plant health	5:15 AM
29-Jun	Brookside Gardens	Azalea Gardens landscape beds	Sevin 50% WP	ground-nesting hornets	prevent harm	8:45 AM
30-Jun	Brookside Gardens	Gude Garden turfgrass	Dimension, Lesco 13-0-0	broadleaf weeds	support turf health	8:00 AM
30-Jun	Cabin John Athletic Area	fields 2, 3, 4, 5, Povich warning tracks	Aceta Force Pro, Surflan	broadleaf weeds, invasive weeds	meet standards of play, player safety	6:30 AM

**Products Applied by Contractors from January 1, 2021 - June 30, 2021**

Date	Location	Treated	Product	Problem	Reason for treatment	Start time
9-Feb	River Road Shale Barrens Conservation Par	forested hillside	Rodeo	honeysuckle	restore habitat/protect ecosystem	7:45 AM
9-Feb	Little Falls Stream Valley Park	floodplain by deer fencing, S of Massachusetts Ave	Rodeo	lesser celandine	restore habitat/protect ecosystem	7:45 AM
10-Feb	River Road Shale Barrens Conservation Par	forested hillside	Rodeo	honeysuckle	restore habitat/protect ecosystem	7:15 AM
10-Feb	Westmoreland Hills Local Park	forested area adjacent to trail, N of parking lot	Garlon 3A	bittersweet, ivy, honeysuckle, m rose, porcelain berry, privet	restore habitat/protect ecosystem	8:00 AM
12-Feb	Westmoreland Hills Local Park	forested area adjacent to trail, N of parking lot	Garlon 3A, Rodeo	english ivy	restore habitat/protect ecosystem	7:30 AM
8-Mar	Little Falls Stream Valley Unit 2	wooded area between Little Falls Parkway/CCT	Rodeo	english ivy, honeysuckle, porcelain berry, wineberry	restore habitat/protect ecosystem	8:00 AM
11-Mar	Little Falls Stream Valley Unit 2	wooded area between Little Falls Parkway/CCT	Rodeo	barberry, wineberry	restore habitat/protect ecosystem	8:00 AM
12-Mar	Little Falls Stream Valley Unit 2	wooded area between Little Falls Parkway/CCT	Rodeo	barberry, wineberry	restore habitat/protect ecosystem	7:30 AM
15-Mar	Westmoreland Hills Local Park	forested area adjacent to trail, N of parking lot	Garlon 3A	english ivy, honeysuckle	restore habitat/protect ecosystem	7:45 AM
28-Apr	Rachel Carson Conservation Park	middle of meadow restoration, nr prkng lot off Zion Rd	Garlon 3A	mile-a-minute	restore habitat/protect ecosystem	8:00 AM
29-Apr	Little Bennett Regional Park	wooded floodplain area, end of Prescott Rd	Garlon 3A	porcelain berry, rosa multiflora, thistle, wineberry	restore habitat/protect ecosystem	7:30 AM
30-Apr	Little Bennett Regional Park	wooded floodplain area, end of Prescott Rd	Garlon 3A	porcelain berry, rosa multiflora, thistle, wineberry	restore habitat/protect ecosystem	7:15 AM
4-May	Black Hill Regional Park	wooded area adj to lake/forebay, S of Cabin Branch SVP	Garlon 3A	garlic mustard, honeysuckle, porcelain berry, wineberry	restore habitat/protect ecosystem	7:30 AM
6-May	Black Hill Regional Park	wooded area adj to lake/forebay, S of Cabin Branch SVP	Garlon 3A	garlic mustard, honeysuckle, porcelain berry, wineberry	restore habitat/protect ecosystem	7:30 AM
11-May	Muddy Branch Stream Valley Park Unit 3	Dufief Drive	Rodeo	bamboo	restore habitat/protect ecosystem	7:30 AM
12-May	Muddy Branch Stream Valley Park Unit 3	Dufief Drive	Rodeo	bamboo	restore habitat/protect ecosystem	7:30 AM
13-May	Ayrlawn Local Park	bottom of hill, near dead end Oak Pl	Rodeo	bamboo	restore habitat/protect ecosystem	7:30 AM
17-May	Black Hill Regional Park	wooded area adj to lake/forebay, S of Cabin Branch SVP	Rodeo	garlic mustard, honeysuckle, porcelain berry, wineberry	restore habitat/protect ecosystem	7:30 AM
3-Jun	Black Hill Regional Park	wooded area adj to lake/forebay, S of Cabin Branch SVP	Rodeo	garlic mustard, honeysuckle, porcelain berry, wineberry	restore habitat/protect ecosystem	7:30 AM
8-Jun	Rachel Carson Conservation Park	forest area along Fern Valley Trail	Rodeo	honeysuckle, porcelain berry, wineberry	restore habitat/protect ecosystem	7:30 AM
9-Jun	Ken-Gar Palisades Local Park	parkland, behind numbers 4122-4126 Wexford Ct	Rodeo	bamboo	restore habitat/protect ecosystem	11:30 AM

Montgomery Parks  
2425 Reddie Drive  
Wheaton, Maryland 20902



[MontgomeryParks.org](http://MontgomeryParks.org)