

# Disc Golf Basics & Planned Course @ Northwest Branch Recreational Park



Image credit: New Hampshire Magazine

## PREPARED BY

CHUCK KINES, PARK PLANNER III

PARK PLANNING & STEWARDSHIP DIVISION

JUNE 2023

# What is Disc Golf?

Disc golf is played much like golf. Instead of a ball and clubs, though, players use a flying disc or Frisbee®. The sport was formalized in the 1970s and shares with golf the object of completing each hole in the fewest strokes (or, in the case of disc golf, fewest throws).

Most disc golf discs are made from polypropylene plastic, otherwise known as polypropene, which is a thermoplastic polymer resin used in a wide variety of applications.



Photo credit: HyzerTimes.com

# How is Disc Golf Played?

- ▶ The sport is usually played on a course with 9 or 18 holes (baskets).
- ▶ Players complete a hole by throwing a disc from a tee pad toward a target, known as a basket, throwing again from where the previous throw landed, until the basket is reached.
- ▶ The trees, shrubs, and terrain changes located in and around the fairways provide challenging obstacles for the golfer.
- ▶ The baskets are formed by wire with hanging chains above the basket, designed to catch the incoming discs, which then fall into the basket, for a score.
- ▶ Usually, the number of throws a player uses to reach each basket is tallied (often in relation to par), and players seek to complete each hole in the lowest number of total throws.
  - ▶ Par 3 = 3 throws (up to 350')
  - ▶ Par 4 = 4 throws (350 - 600')
  - ▶ Par 5 = 5 throws (over 600')



3



# Tee Box

- ▶ Hard surface pad
- ▶ Size and material varies
- ▶ Sign with hole #, Par score, and a map showing obstacles in fairway to avoid
- ▶ Think of it as your “Tee Shot”



# Fairway

- ▶ Next throw is taken from where tee shot landed
- ▶ Think of it as your iron or fairway wood shot



# Hole (Basket)

- ▶ The goal of the final throw is to make it into the basket
- ▶ Think of it as “the putt”



# Canyon at Horning's Hideout Disc Golf Course

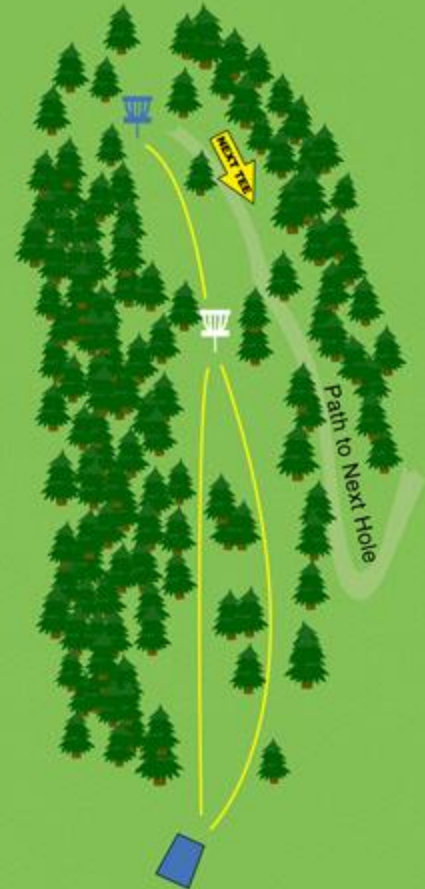
5

PAR  
3

218'

306'

ELEVATION  
-8'



# Where is Disc Golf Played?



Photo credit: Arapahoe Ski Basin



Photo credit: PDGA



Photo credit: Udisc.com



Photo credit: Flying Disc Store



Photo credit: Disc Golf Action



Photo credit: San Diego Tribune



# There are more disc golf courses in the United States than **Dunkin' Donuts** shops

That's a delicious stat if we've ever heard one. Here's the tally:

- 🥏 Disc golf courses: 9,465
- 🍩 Dunkin' locations: 8,500

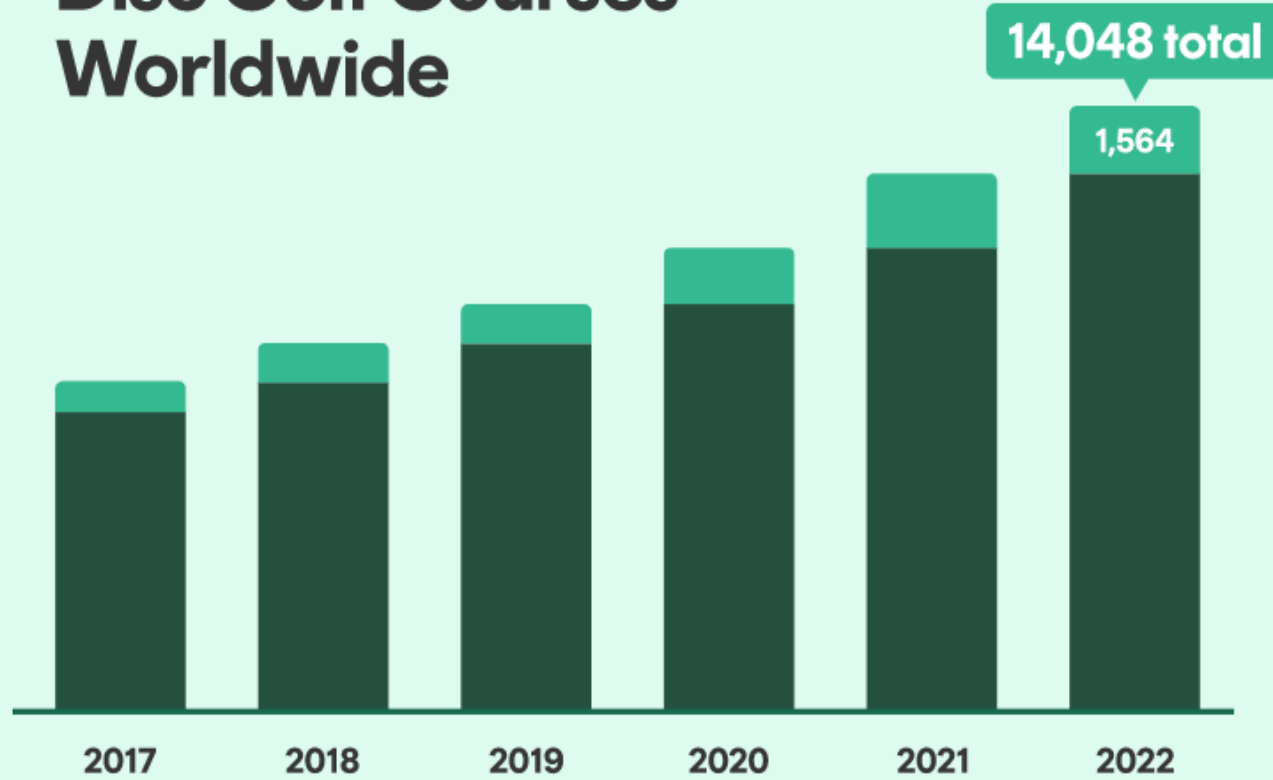
Be sure to save that one for your next trivia night, or when you just want to impress your friends. For bonus points, tell them America runs on disc golf.

While that's a fun tidbit to keep in your back pocket, a better comparison puts disc golf up against other common recreational activities in the U.S.:

- 🏌️ Golf courses: 16,000
- 🎾 Tennis facilities: 14,684
- 🥒 Pickleball facilities: 10,724
- 🥏 Disc golf courses: 9,465

**Keep in mind:** Golf and tennis both include private facilities that often involve membership fees. Meanwhile...

## Disc Golf Courses Worldwide



DISC GOLF GROWTH REPORT 2023

POWERED BY **UDisc**

## Disc Golf Growth

Disc golfers venturing out to their local courses have seen significantly more crowded conditions – a good problem to have, but one that must be addressed. Thankfully, course numbers are trending upward, as are event counts (see figure 8 for combined trends).

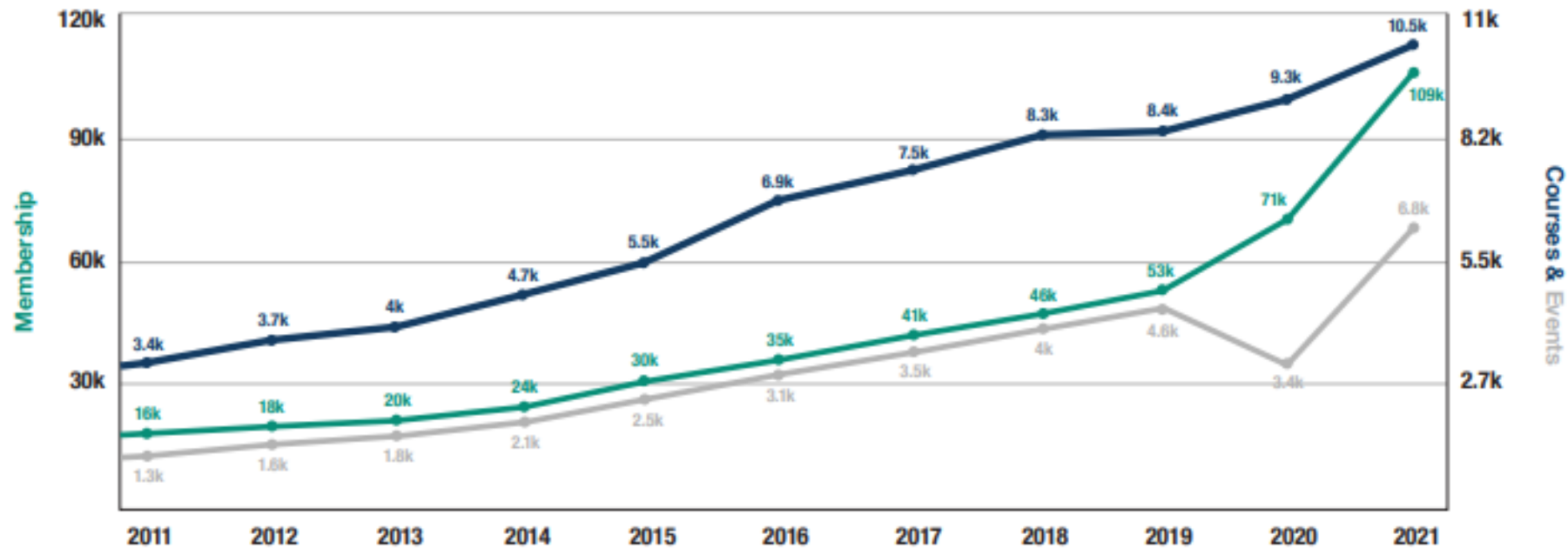


Figure 8: Combined Growth (please note there are two scales) ■ Members ■ Courses ■ Events

Source: PDGA 2021 Year-End Demographics Report

## Disc Golf, A Game for Life.

Not surprisingly, every measured age range experienced a year-over-year increase in membership, with growth rates ranging from 37 to 91 percent.

Of note, the most significant growth rates in membership by age are occurring in the youngest – below age 25, or the oldest – above age 75 – age brackets.

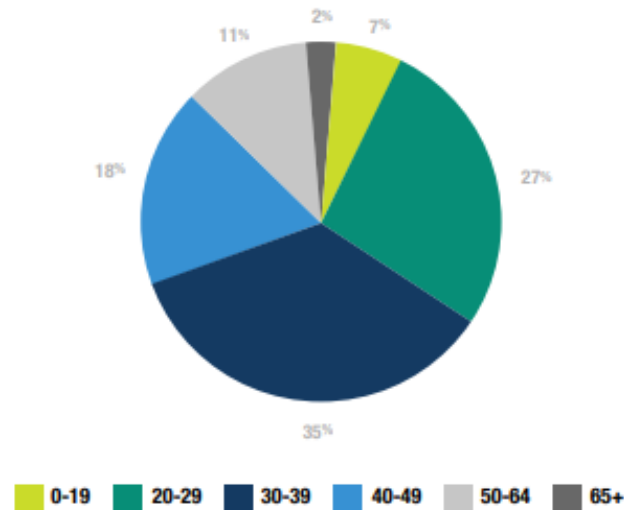


Figure 4: Age Distribution

# Who Plays Disc Golf?

Source: PDGA 2021 Year-End Demographics Report

# What is the state of disc golf in the U.S.?

PDGA USA			
State	Members	Courses	Events
Texas	7,145	528	485
California	6,095	378	250
Michigan	4,633	350	282
North Carolina	4,412	310	329
Florida	3,828	205	161
Ohio	3,514	296	163
Illinois	3,195	303	161
Colorado	2,922	231	150
Georgia	2,874	156	204
Pennsylvania	2,798	229	182
Washington	2,606	145	126
Tennessee	2,548	182	131
Missouri	2,534	213	136
Minnesota	2,426	368	118
Wisconsin	2,335	371	116
Oregon	2,327	157	183
Virginia	2,315	162	176
Indiana	2,275	211	212
New York	2,016	161	146
Oklahoma	1,797	184	112
Kentucky	1,748	132	145
South Carolina	1,698	141	130
Alabama	1,681	132	124
Kansas	1,638	290	134
Iowa	1,584	309	104
Massachusetts	1,334	68	76
Arizona	1,321	93	67
Arkansas	1,047	124	78
Maryland	1,040	56	57
New Jersey	1,012	42	75
Utah	987	84	61
Louisiana	797	63	49
Maine	739	88	39
Idaho	709	108	43
New Hampshire	670	36	59
Mississippi	663	105	32
Connecticut	615	33	15
Nevada	600	41	37
Nebraska	563	112	55
West Virginia	470	78	43
New Mexico	380	60	26
Vermont	353	50	23
Delaware	295	14	35
Montana	295	73	30
South Dakota	286	84	29
Alaska	269	43	28
North Dakota	201	67	16
Rhode Island	146	4	3
Hawaii	145	20	10
Wyoming	144	47	16
APO/AE	65	0	3
Dist. Of Columbia	58	0	0
USA	Members	Courses	Events
USA - 2021	88,148	7,737	5,465
USA - 2020	56,943	6,936	2,592
% Change	54.80%	11.55%	110.84%

2021 Membership Female Age Bracket Distribution			
Female Age Bracket Range	Professional	Amateur	Total
6 & Under	0	277	277
8 & Under	0	62	62
10 & Under	0	82	82
12 & Under	0	106	106
15 & Under	3	154	157
18 & Under	15	146	161
19 - 39	631	4,113	4,744
40 - 49 -	211	1,134	1,345
50 - 54 -	54	339	393
55 - 59 -	43	272	315
60 - 64 -	30	146	176
65 - 69 -	18	62	80
70 - 74 -	1	12	13
75 - 79 -	3	9	12
80 +	1	3	4
Totals	1,010	6,917	7,927

7% Female

2021 Membership Male Age Bracket Distribution			
Male Age Bracket Range	Professional	Amateur	Total
6 & Under	0	524	524
8 & Under	0	218	218
10 & Under	0	352	352
12 & Under	2	581	583
15 & Under	13	1,643	1,656
18 & Under	157	2,381	2,538
19 - 39	8,718	56,137	64,855
40 - 49 -	3,345	15,002	18,347
50 - 54 -	1,068	4,221	5,289
55 - 59 -	795	2,978	3,773
60 - 64 -	520	1,740	2,260
65 - 69 -	249	824	1,073
70 - 74 -	84	279	363
75 - 79 -	22	55	77
80 +	9	18	27
Totals	14,982	86,953	101,935

93% Male

Source: PDGA 2021 Year-End Demographics Report

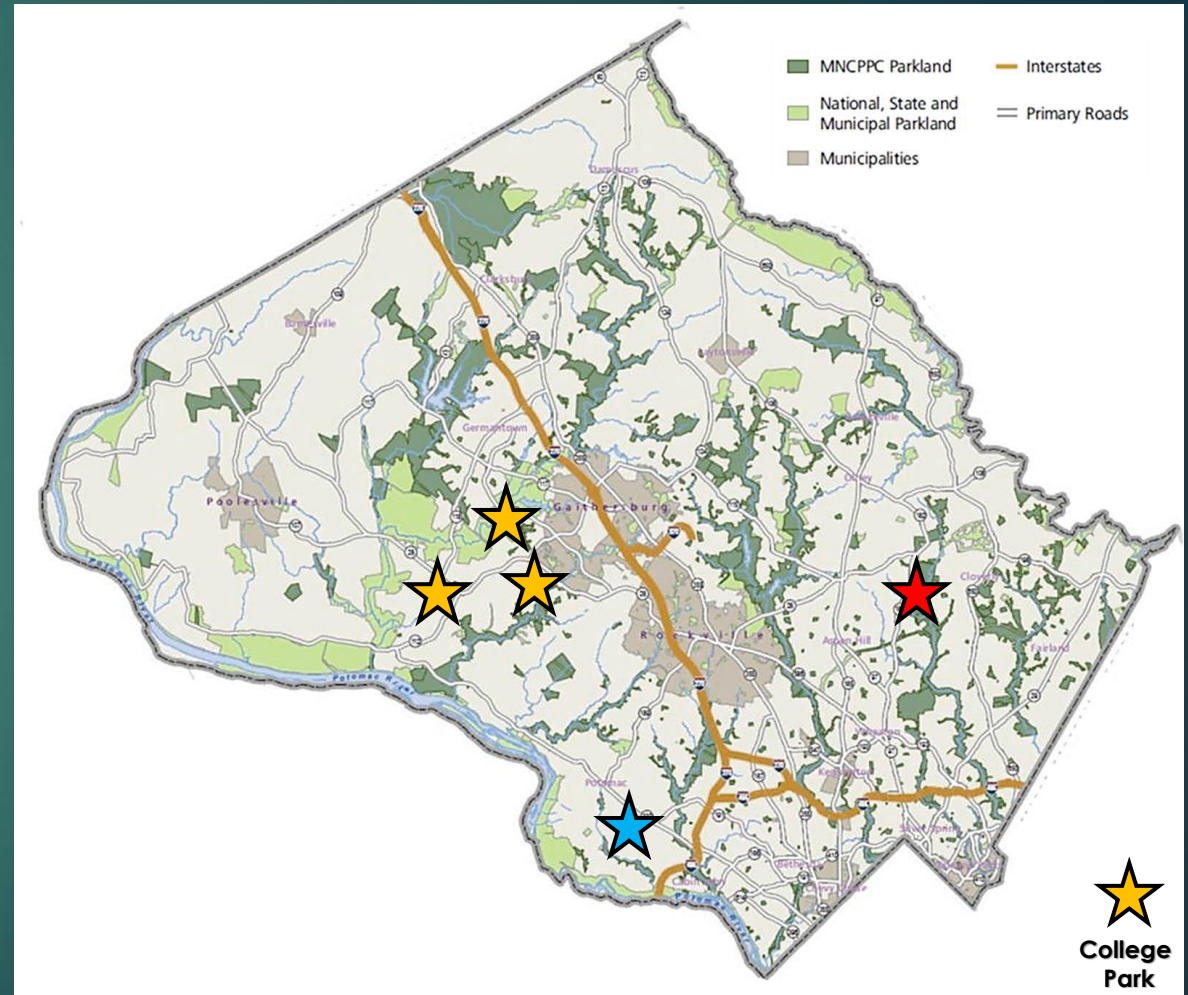
# Disc Golf Courses in Montgomery County

★ **Existing:** Seneca Creek State Park (27 holes), Darnestown Swim & Racquet Club (9 holes), Westleigh Swim & Racquet Club (9 holes)

*(Plus, one nearby in College Park)*

★ **Under construction:** 9-hole practice course at Avenel Local Park

★ **Planned:** 18-hole Northwest Branch Recreational Park



# Disc Golf @ Northwest Branch

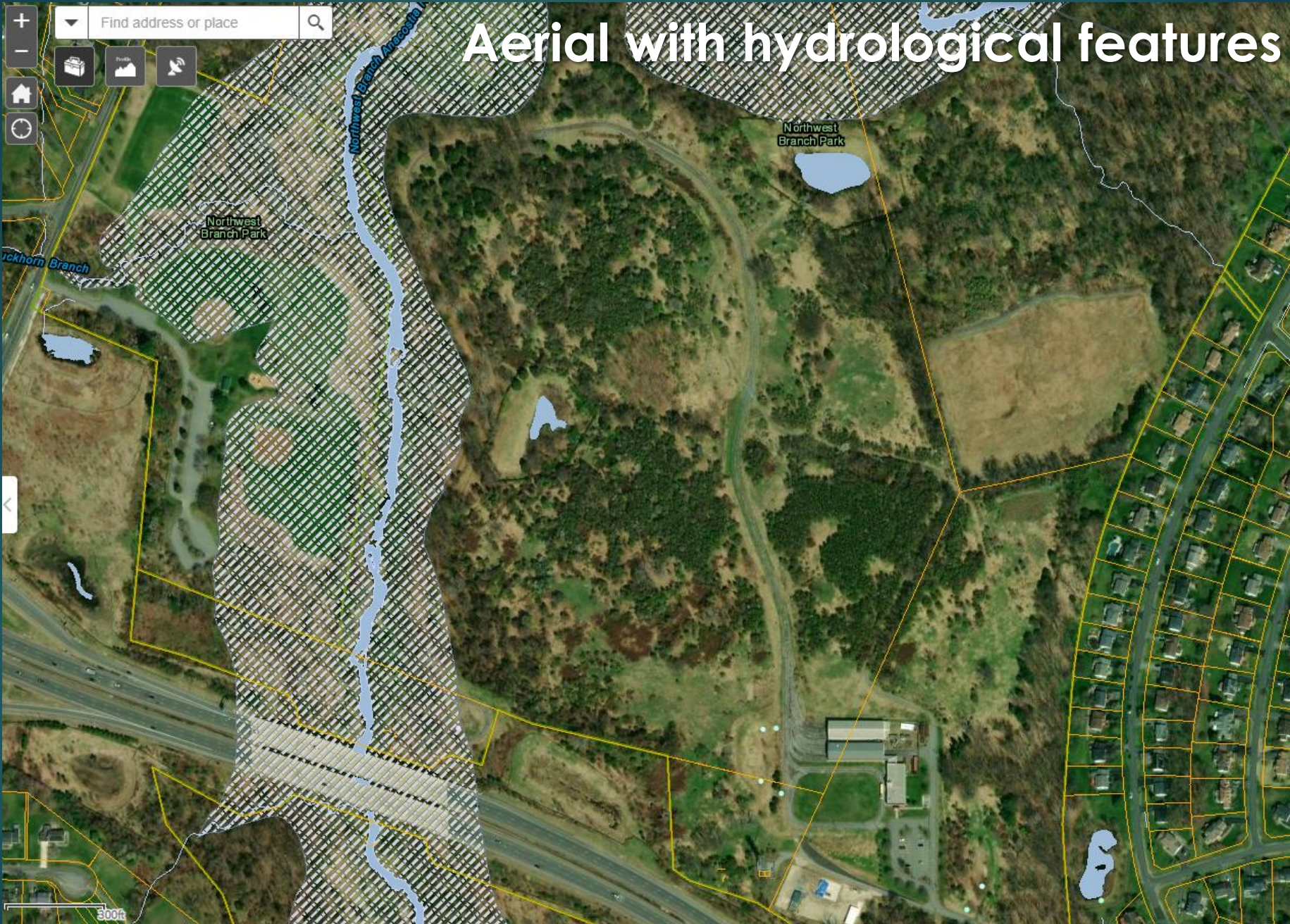




# Aerial without foliage





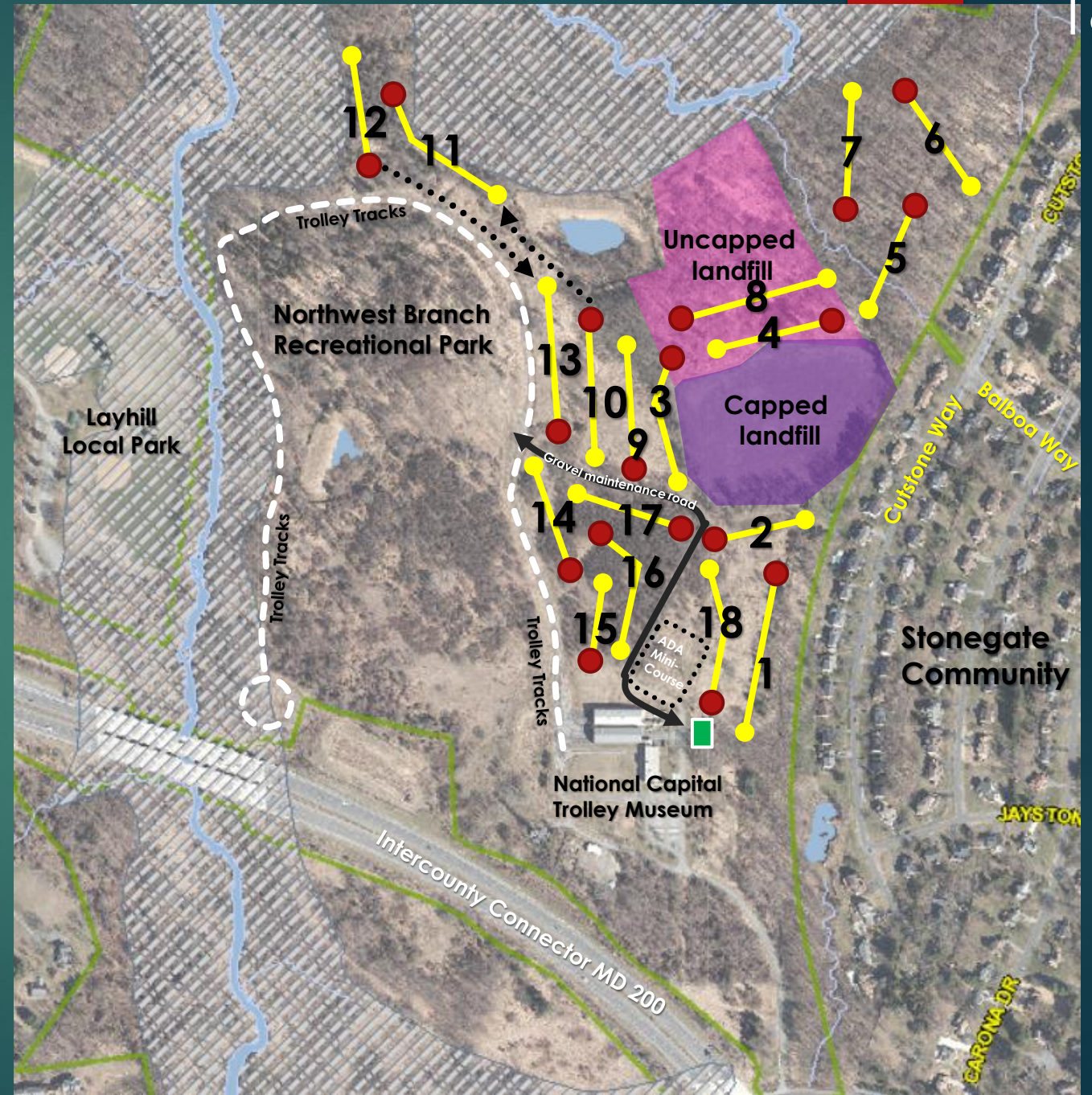
# Aerial with hydrological features



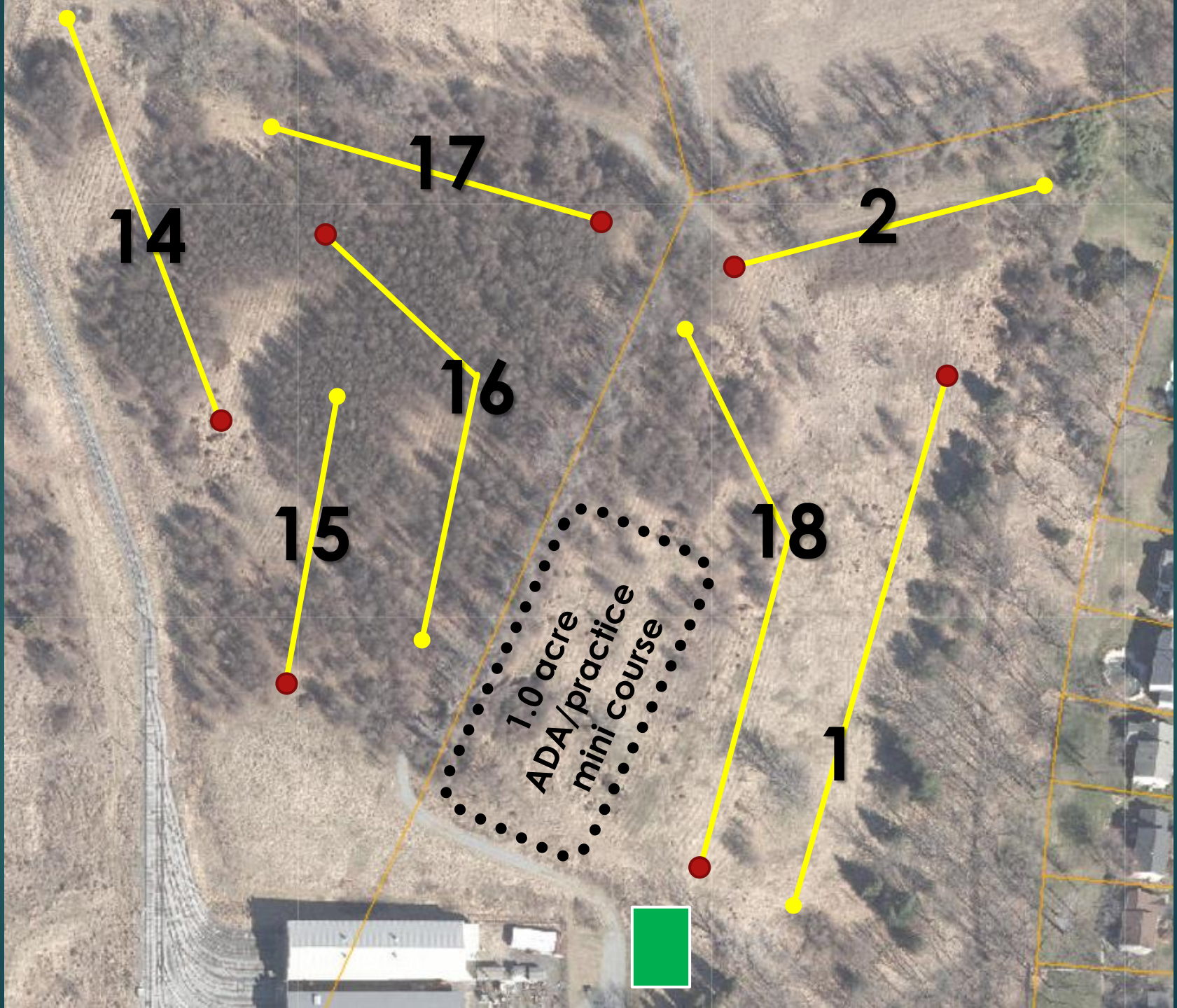
# Disc Golf Course @ Northwest Branch/ Trolley Museum

## Revised Proposed Layout June 2023

- Tee Box
- Basket/Hole
- General fairway alignment
- Picnic Pavilion
-  Northwest Branch and floodplain (Avoid)
-  Capped Landfill (Avoid)
-  Uncapped Landfill (Minimize use to extent feasible)



- 1. 500' (4)
- 2. 300' (3)
  
- 14. 450' (4)
- 15. 300' (3)
- 16. 450' (4)
- 17. 300' (3)
- 18. 500' (4)



- 3. 450' (4)
- 4. 450' (4)
- 5. 450' (4)
- 6. 450' (4)
- 7. 250' (3)
- 8. 500' (4)
- 9. 450' (4)
  
- 10. 450' (4)
- 11. 450' (4)
- 12. 450' (4)
- 13. 450' (4)

Holes 1-9 = 3,800'  
 Holes 10-18 = 3,800'  
 TOTAL = 7,600'



Par for "White Tees" (34/34 = 68)

# Course landscape and characteristics

- ▶ Designed with nature, combination of wooded and meadow fairways
- ▶ Minimal grading just to aid with mowing of meadow fairways and baskets, minimal tree removal or trimming
- ▶ Avoid sensitive environmental features, capped landfill and old farm ponds
- ▶ 100' buffer from trolley tracks
- ▶ 12'x6' wooden-framed tee boxes (surface TBD)
- ▶ Two tee boxes (white and blue) and two basket locations on each hole
- ▶ In-ground yellow marker stones for beginner tees
- ▶ Multi-generational, Family-friendly, ADA accessible mini-course, Driving range, Putting area
- ▶ Trolley-themed design
- ▶ Open only during daylight hours; no lights on the course
- ▶ **Project goal: Best in the Metro DC Area, suitable for hosting local or regional tournaments**



# Project schedule

22

- ▶ Fall 2022/Winter 2023 – Preliminary Layout
- ▶ Late March 2023 – Houck Design site visit and meeting
- ▶ April – Houck Design analysis and report with revised layout
- ▶ June 20<sup>th</sup> - Community Meeting @ National Capital Trolley Museum
- ▶ Summer 2023 – Broader outreach and engagement + Open Town Hall Survey open through August
- ▶ July 2023 through June 2024 – Detailed Design and Engineering
  - ▶ Course layout/flow
  - ▶ Design elements
  - ▶ Tree plantings and removals
  - ▶ Associated amenities (benches and bathrooms)
  - ▶ Parking
- ▶ Fall 2024 through Spring 2025 – Construction
- ▶ Spring 2025 – Grand Opening

**Budget for Design and Construction = \$500,000**

# Questions?

23

Chuck Kines, Park Planner III

M-NCPPC, Montgomery Parks

[Charles.Kines@montgomeryparks.org](mailto:Charles.Kines@montgomeryparks.org)

301-495-2184

