

BETHESDA MARKET PARK

COMMUNITY MEETING | Bethesda, MD

MARCH 15TH + MARCH 16TH



PRESENTATION AGENDA:

1. Project Introduction
2. Planning Guidance and Regulatory History
3. Preliminary Program/Vision for the Park
4. Park Vision
5. Brainstorming Sessions
6. Next Steps

PLANNING GUIDANCE

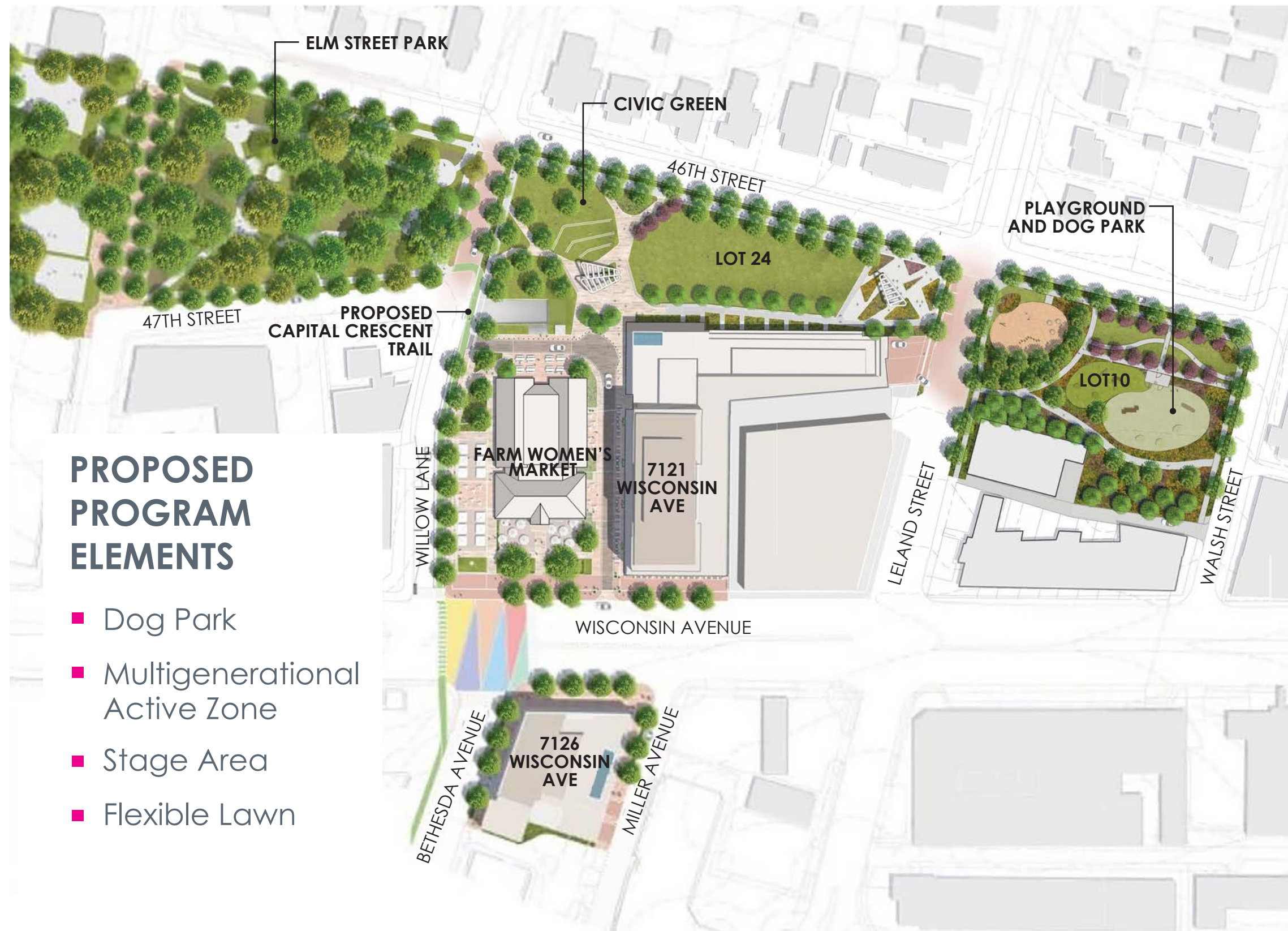
(these are the documents that stated that there should be a park instead of parking lots)

1. Bethesda Downtown Sector Plan as Approved and Adopted in 2017

- Convert county owned surface parking lots to parkland/neighborhood greens to the maximum extent feasible.
- The Farm Women's Market Civic Green Vision: This Civic Green is envisioned as a **green open space** next to the Farm Women's Cooperative Market, which is the longstanding community institution in the historic heart of Bethesda. This space would act as both a destination and **a local gathering spot**, providing a space for market customers to eat and relax. It serves as an extension of Elm Street Park and the recommended Eastern Greenway. To create a prominent civic space, it is recommended that this new civic green be integrated with the potential new park on Lot 24.
- Purpose: This **civic green** will maintain the **historic building** as a functioning market and a central activating feature for a green civic space that connects to the proposed Eastern greenway and Elm Street Park

2. 2022 Park Recreation and Open Space Plan

SKETCH PLAN



PROPOSED PROGRAM ELEMENTS

- Dog Park
- Multigenerational Active Zone
- Stage Area
- Flexible Lawn



APPROVED SKETCH PLAN

VISION FOR BETHESDA MARKET PARK

- A **vibrant** community destination for events and gathering
- **Multi-generational** activities and amenities
- **Welcoming** to all County-area residents, workers and visitors
- A key part of the southern Bethesda Eastern Greenway, providing a **promenade connection** along the corridor and to the popular Capital Crescent Trail

PRELIMINARY PROGRAM OF REQUIREMENTS

Developed using these plans and data sources:

- Compliance with the Approved and Adopted May 2017 Bethesda Downtown Plan
- Including **community input** during the planning process
- Bethesda Downtown Plan Urban Design Guidelines
- 2010-2040 demographic data for the Bethesda Downtown Area
- 2022 Parks Recreation Open Space (PROS) Plan
- Compliance with the Energized Public Spaces (EPS) tool to identify the **Park amenities and experiences** within a 10-minute walk

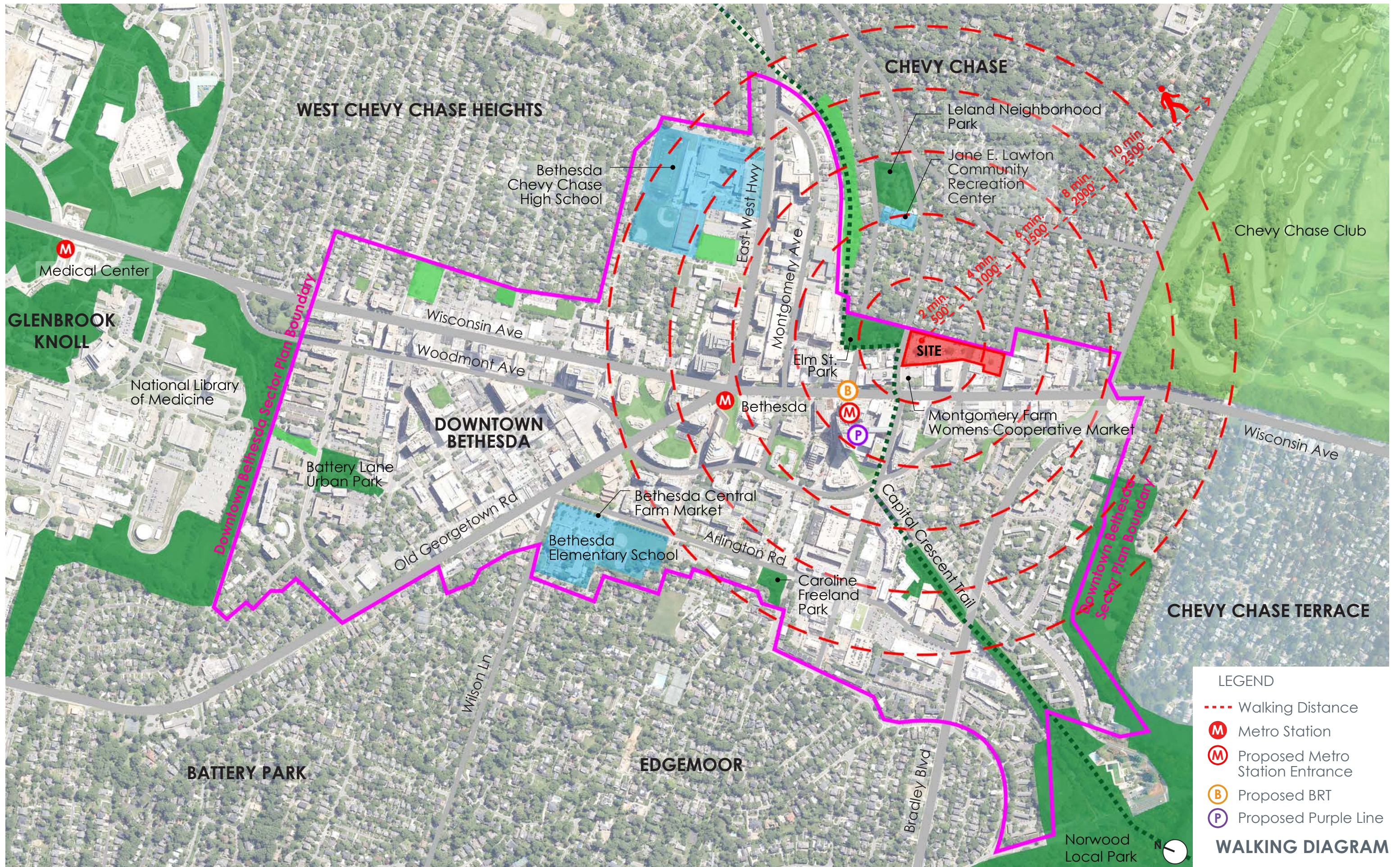
PRELIMINARY PROGRAM OF REQUIREMENTS

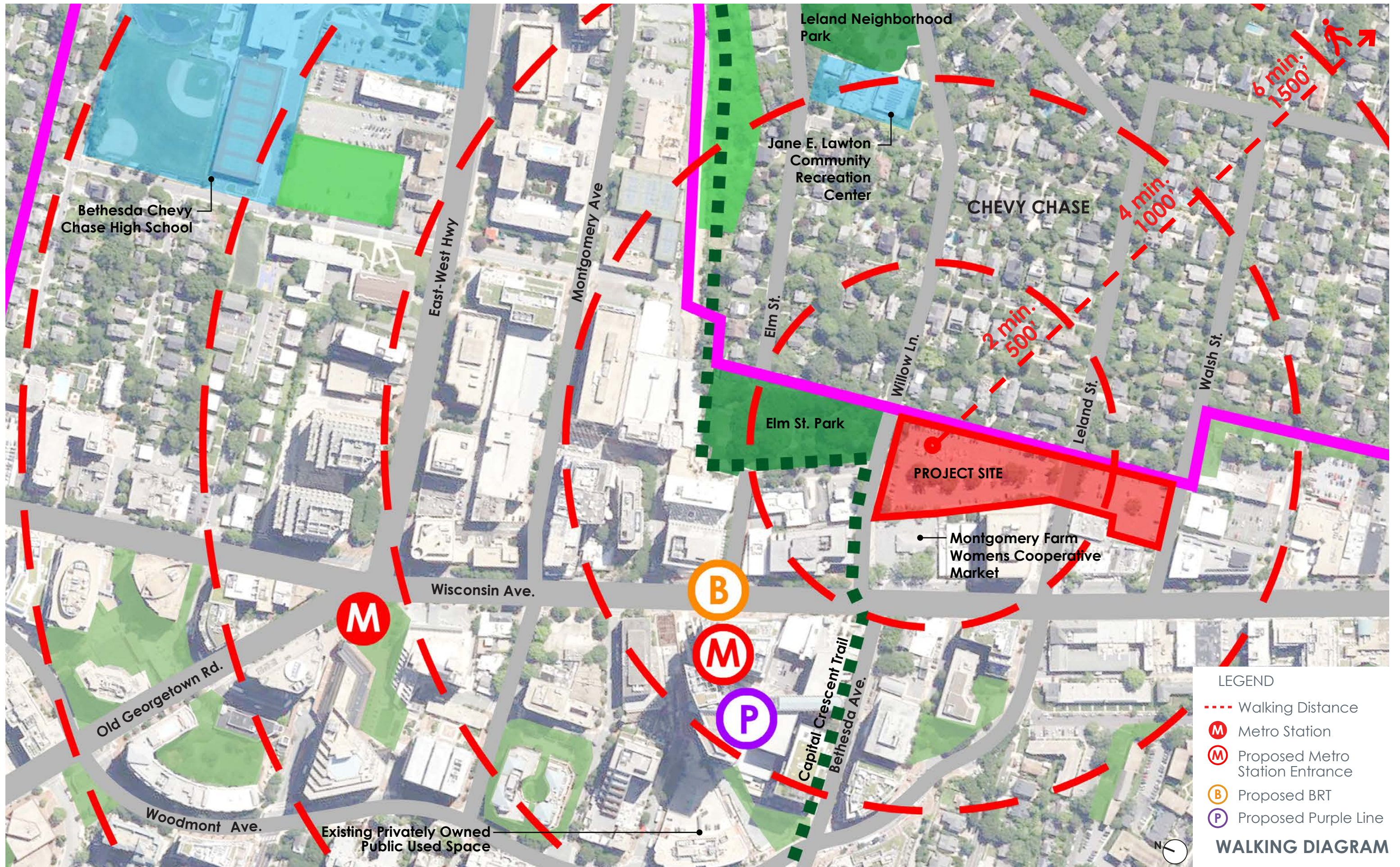
- **Large Festival Lawn** (for events, gathering, relaxing, spontaneous play)
- **Greenway Promenade**
- **Dog Park**
- **Play Areas**
- **Artistic Features:**
 - Interactive lighting
 - Murals
 - Interactive Art/Sculpture
- **Environmental Features:**
 - Innovative Stormwater Management
 - Trees and Plantings
- **Amenities:**
 - Wi-Fi
 - Special Paving
 - Lighting
 - Variety of Seating Options
- **Active and Social Amenities** (for adults, seniors, teenagers, and children- relaxing, spontaneous play):
 - All weather ping pong tables
 - Game tables (e.g., chess/checkers)
 - Bocce courts
 - Adult swings
 - Performance Space
 - Climbable Art

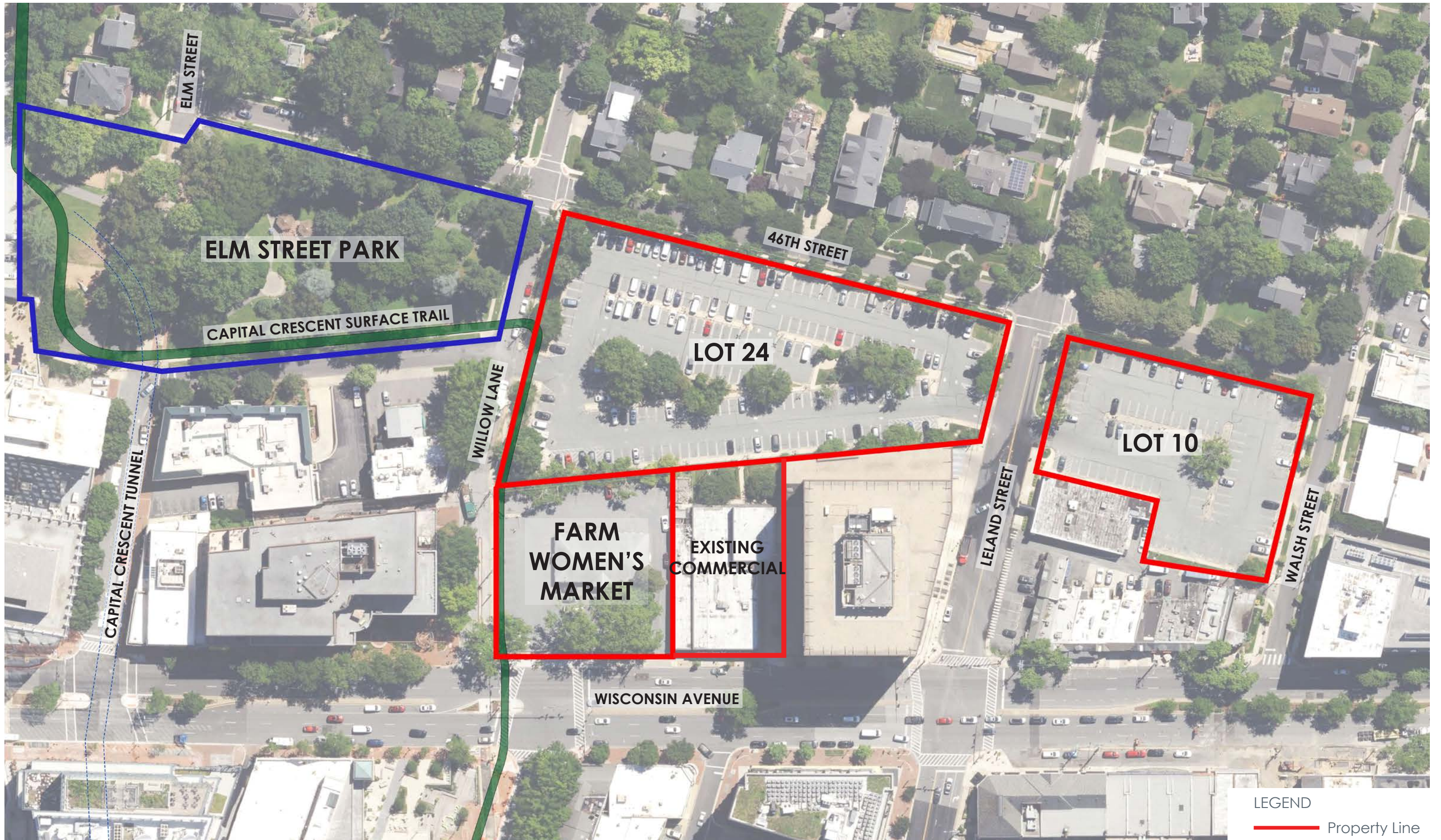
A nighttime photograph of a city street scene. In the foreground, there is a transit station entrance with a set of stairs and a colorful mural on the wall. The background features several tall, modern buildings with illuminated windows and decorative lighting. The text "SITE ANALYSIS" is written in pink, and "URBAN AND PROJECT SITE SCALE" is written in black, both centered over the image.

SITE ANALYSIS

URBAN AND PROJECT SITE SCALE







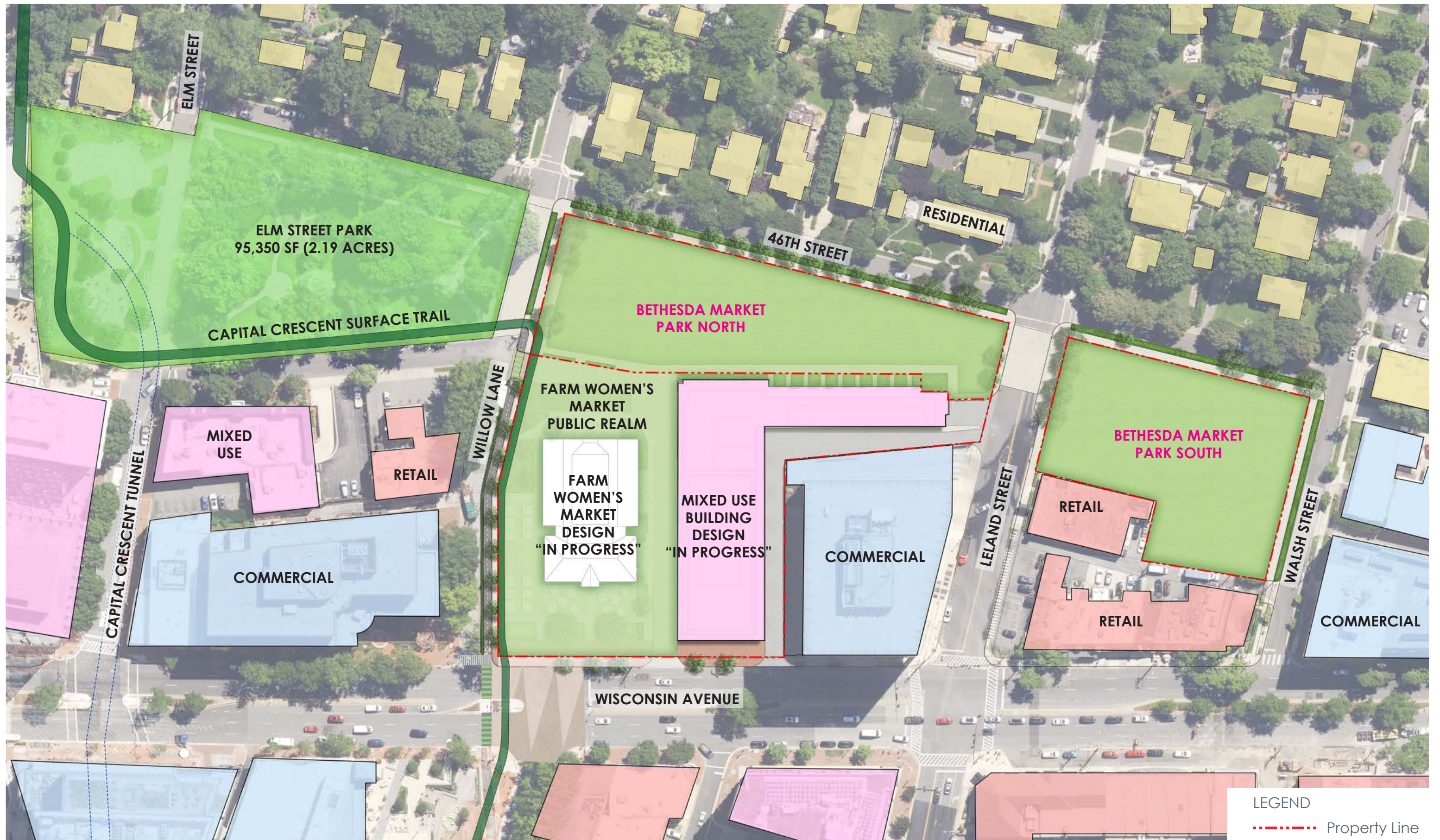
LEGEND
— Property Line



EXISTING CONDITIONS



SITE ANALYSIS - THE TRANSFORMATION OF PARKING LOTS TO A LINEAR PARK SYSTEM



ELM STREET PARK
95,350 SF (2.19 ACRES)

CAPITAL CRESCENT SURFACE TRAIL

RESIDENTIAL

46TH STREET

BETHESDA MARKET PARK NORTH

FARM WOMEN'S MARKET PUBLIC REALM

FARM WOMEN'S MARKET DESIGN "IN PROGRESS"

MIXED USE BUILDING DESIGN "IN PROGRESS"

COMMERCIAL

BETHESDA MARKET PARK SOUTH

RETAIL

RETAIL

WALSH STREET

COMMERCIAL

MIXED USE

RETAIL

COMMERCIAL

CAPITAL CRESCENT TUNNEL

WILLOW LANE

LELAND STREET

WISCONSIN AVENUE

LEGEND
- - - - - Property Line



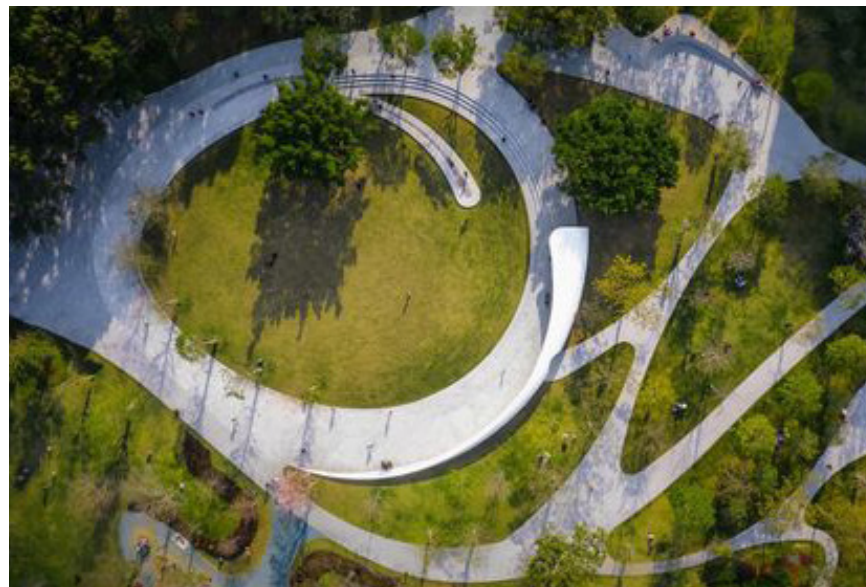
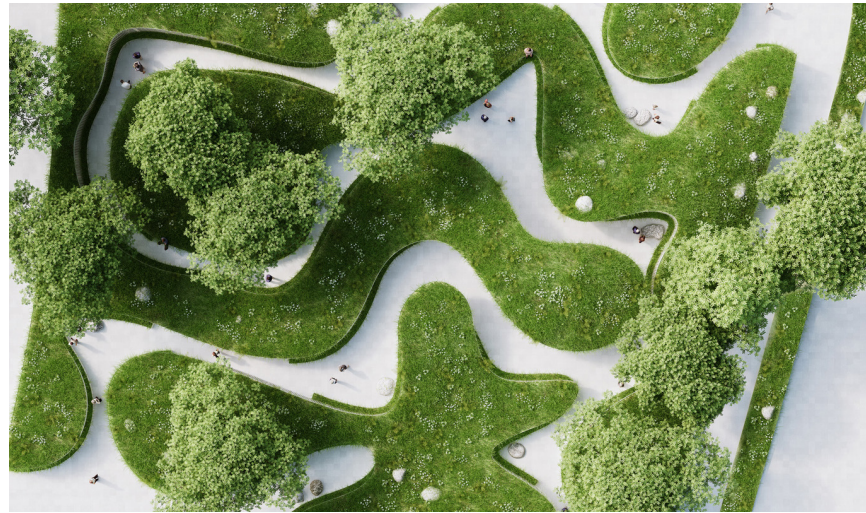
SITE ANALYSIS - PARK ADJACENCIES



SITE ANALYSIS - NEIGHBORHOOD CONTEXT CIRCULATION DIAGRAM

A photograph of a park with a pond, trees, and people walking and playing. The scene is bright and sunny, with lush green grass and several large rocks scattered across the lawn. In the background, a group of people is walking along a path near a pond. In the foreground, a young child in a green shirt is crawling on the grass, and another child is being held by an adult. The text "PLANNING THE PARK" is written in pink, and "CONNECTING WITH NATURE" is written in black, both in a bold, sans-serif font.

PLANNING THE PARK
CONNECTING WITH NATURE

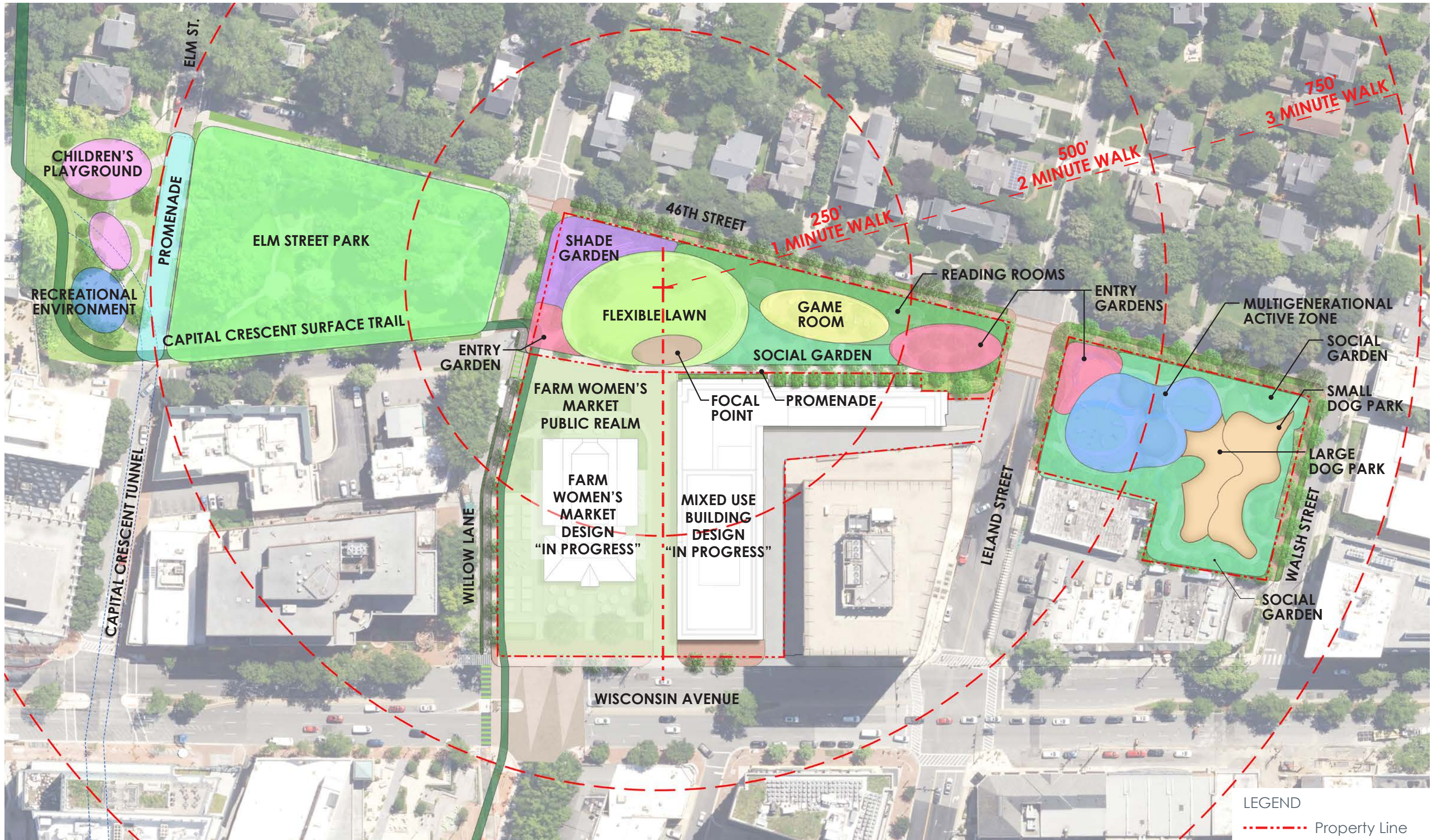


BIOPHILIC DESIGN

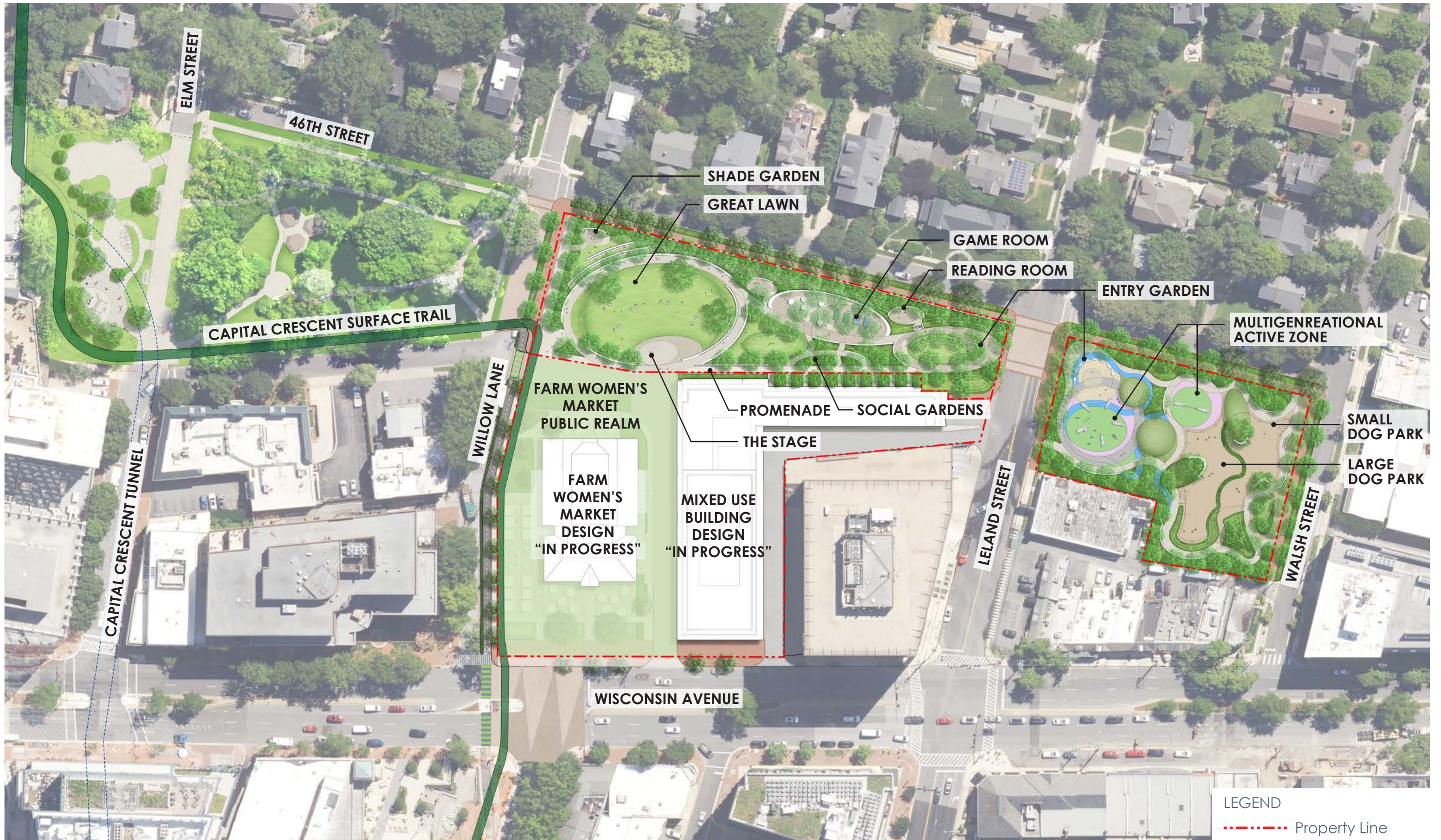
This landscape architectural framework weaves patterns and forms of nature in the built environment to strengthen the human-nature connection for the residents in Bethesda and the greater regional context.



OPEN SPACE GUIDING PRINCIPAL - **BIOPHILIC DESIGN**



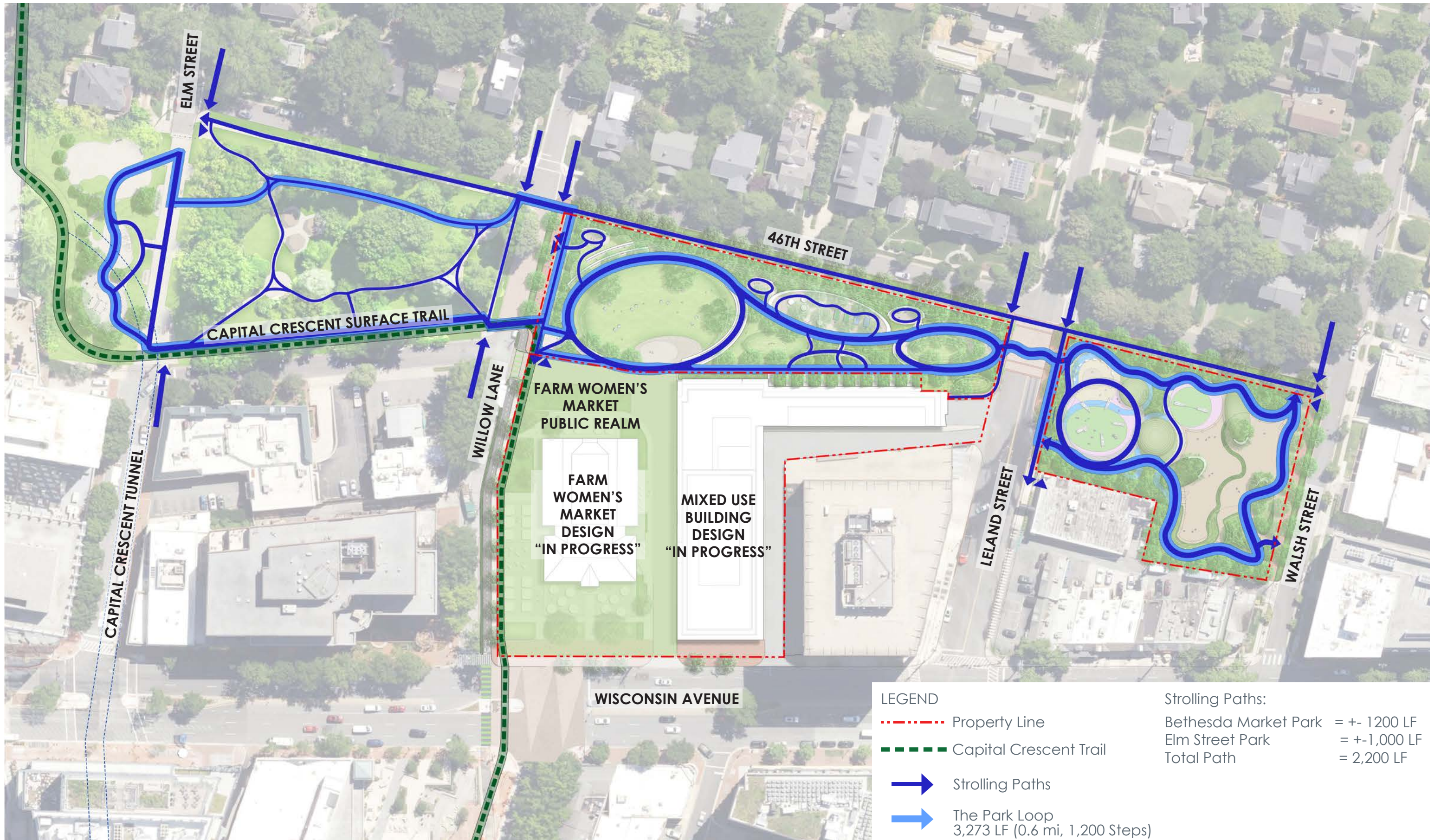
PROGRAM DIAGRAM - HOW THE SPACES RELATE TO EACH OTHER



LEGEND
 - - - - - Property Line



PARK PLAN



THE PARK STROLLING PATHS



BETHESDA MARKET PARK NORTH AMENITIES



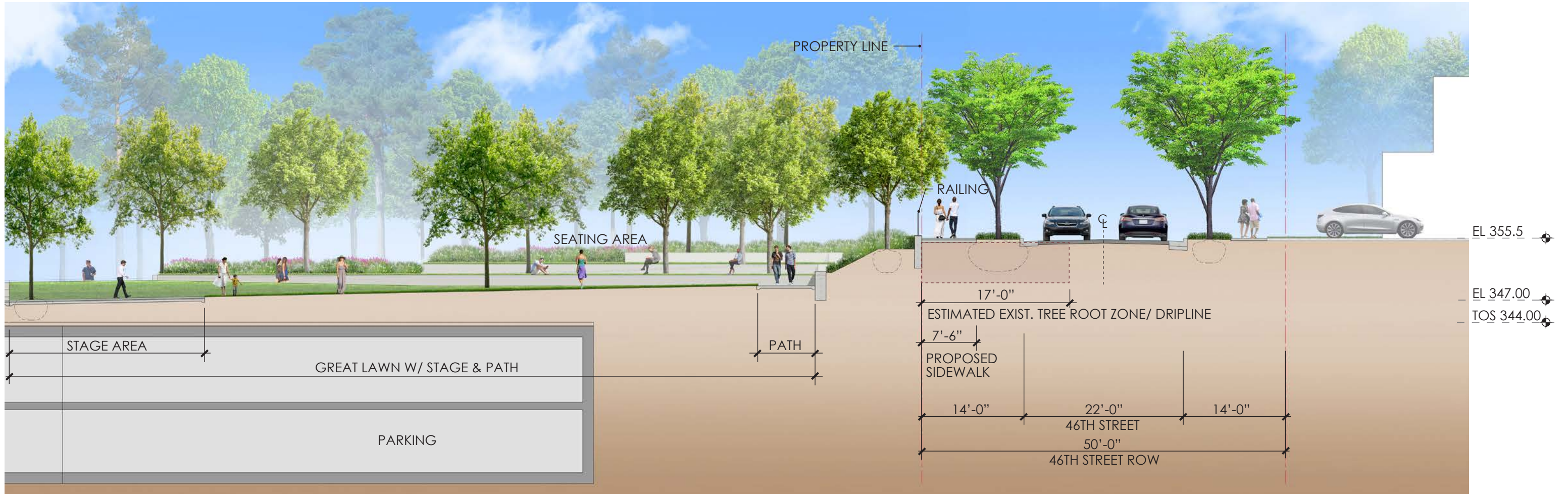
LEGEND
 - - - - - Property Line



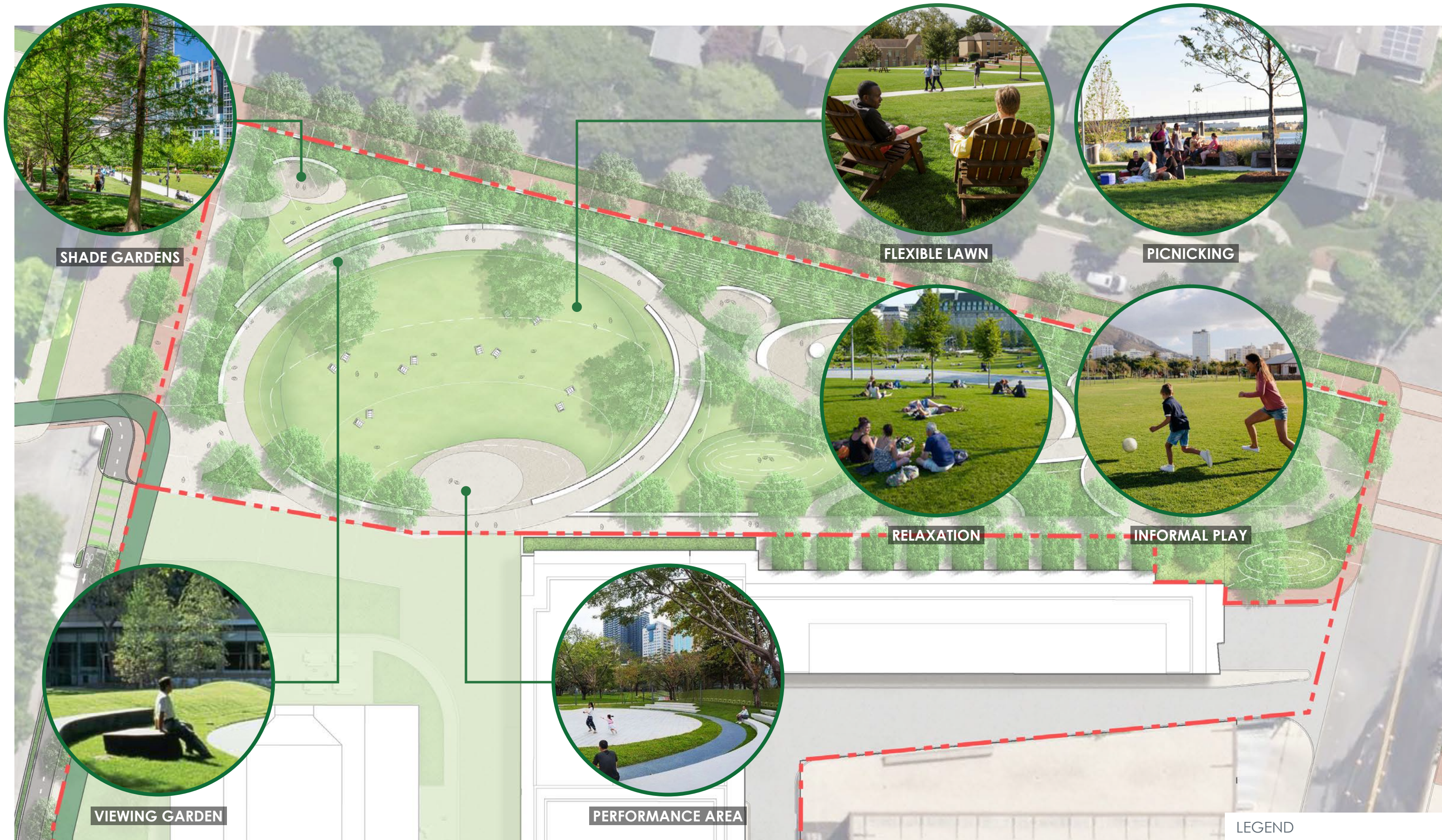
BETHESDA MARKET PARK NORTH - ENLARGEMENT PLAN



KEY PLAN



BETHESDA MARKET PARK NORTH - GREAT LAWN SECTION



SHADE GARDENS

FLEXIBLE LAWN

PICNICKING

RELAXATION

INFORMAL PLAY

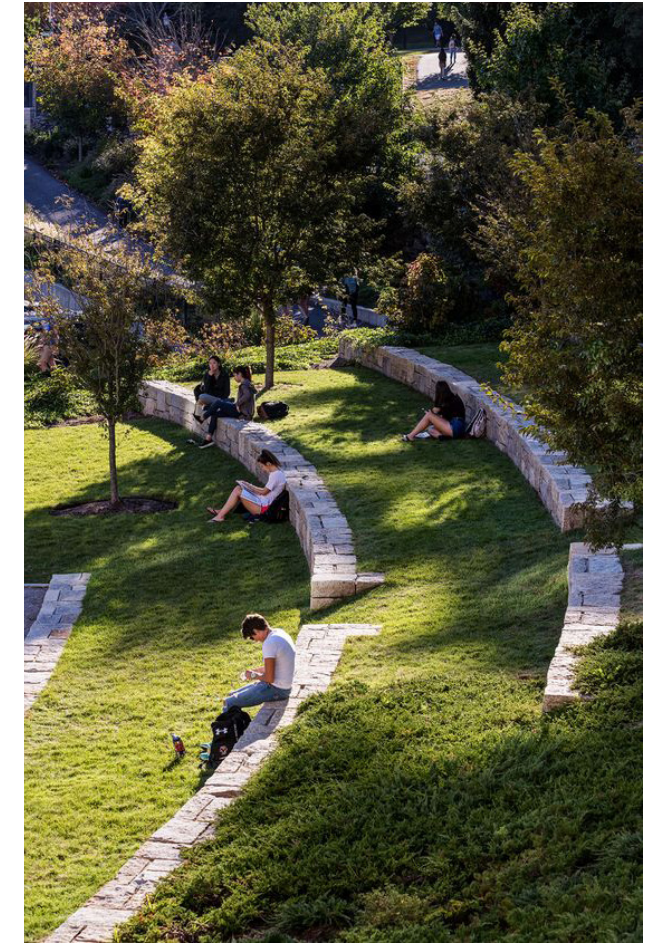
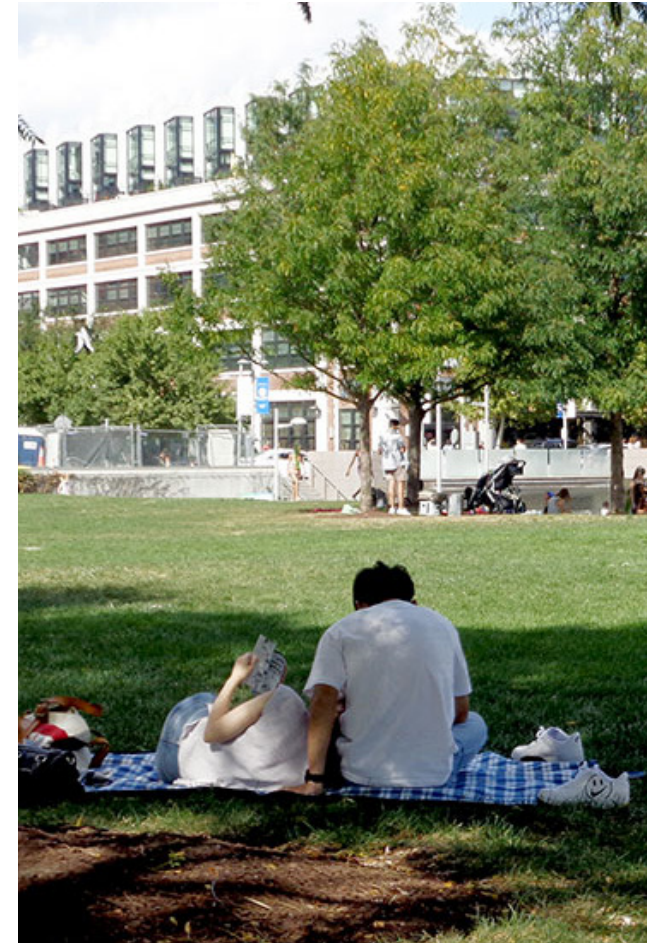
VIEWING GARDEN

PERFORMANCE AREA

LEGEND
 - - - - - Property Line



BETHESDA MARKET PARK NORTH - AMENITIES



INSPIRATION IMAGES - GREAT LAWN



FOOSBALL

BOARD GAMES

PINGPONG

READING ROOMS

INFORMAL SOCIAL DINING

ENTRY GARDENS

LEGEND

--- Property Line



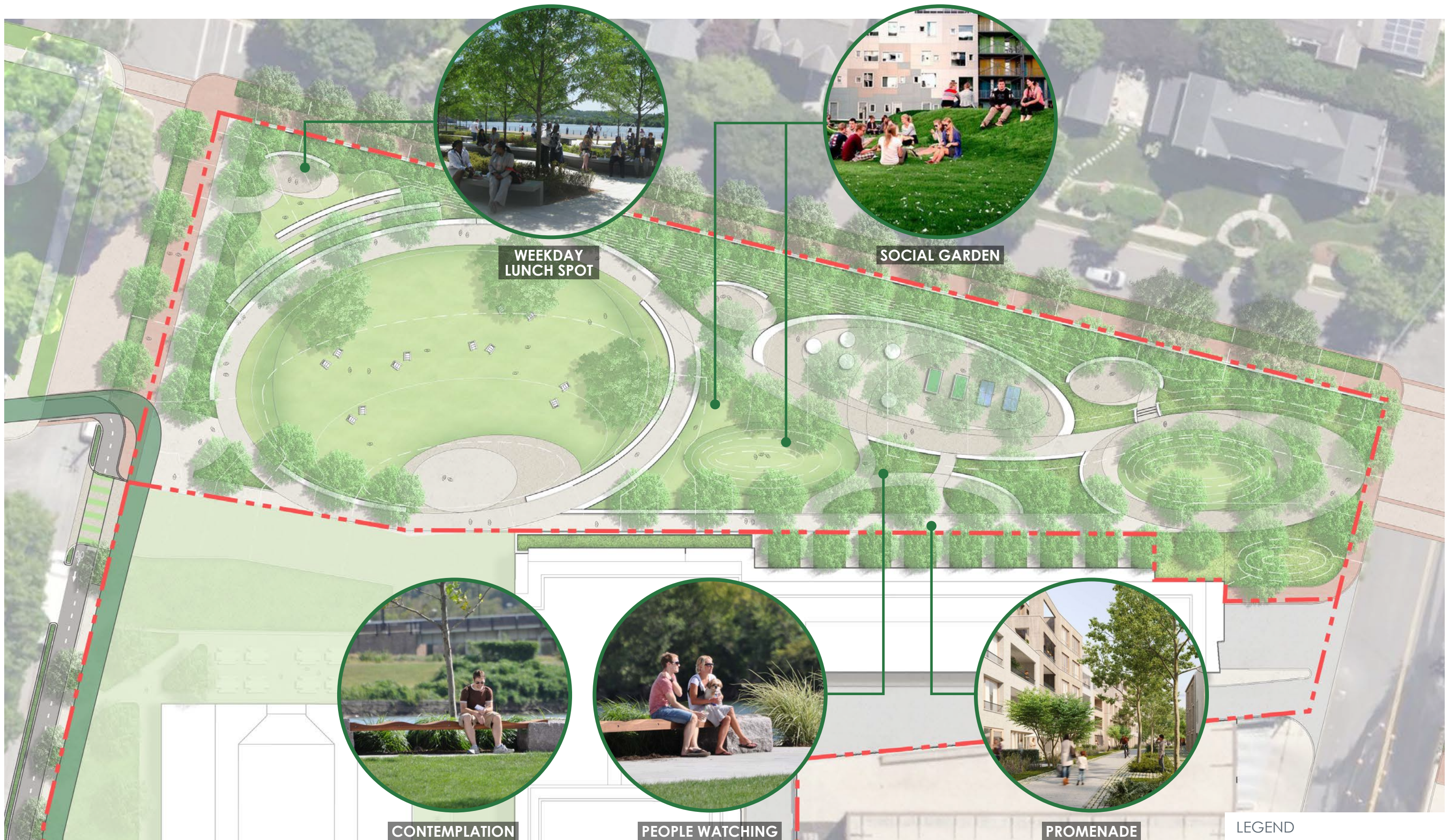
BETHESDA MARKET PARK NORTH - AMENITIES



INSPIRATION IMAGES - GAMES ROOM



INSPIRATION IMAGES - ENTRY GARDEN



WEEKDAY LUNCH SPOT

SOCIAL GARDEN

CONTEMPLATION

PEOPLE WATCHING

PROMENADE

LEGEND

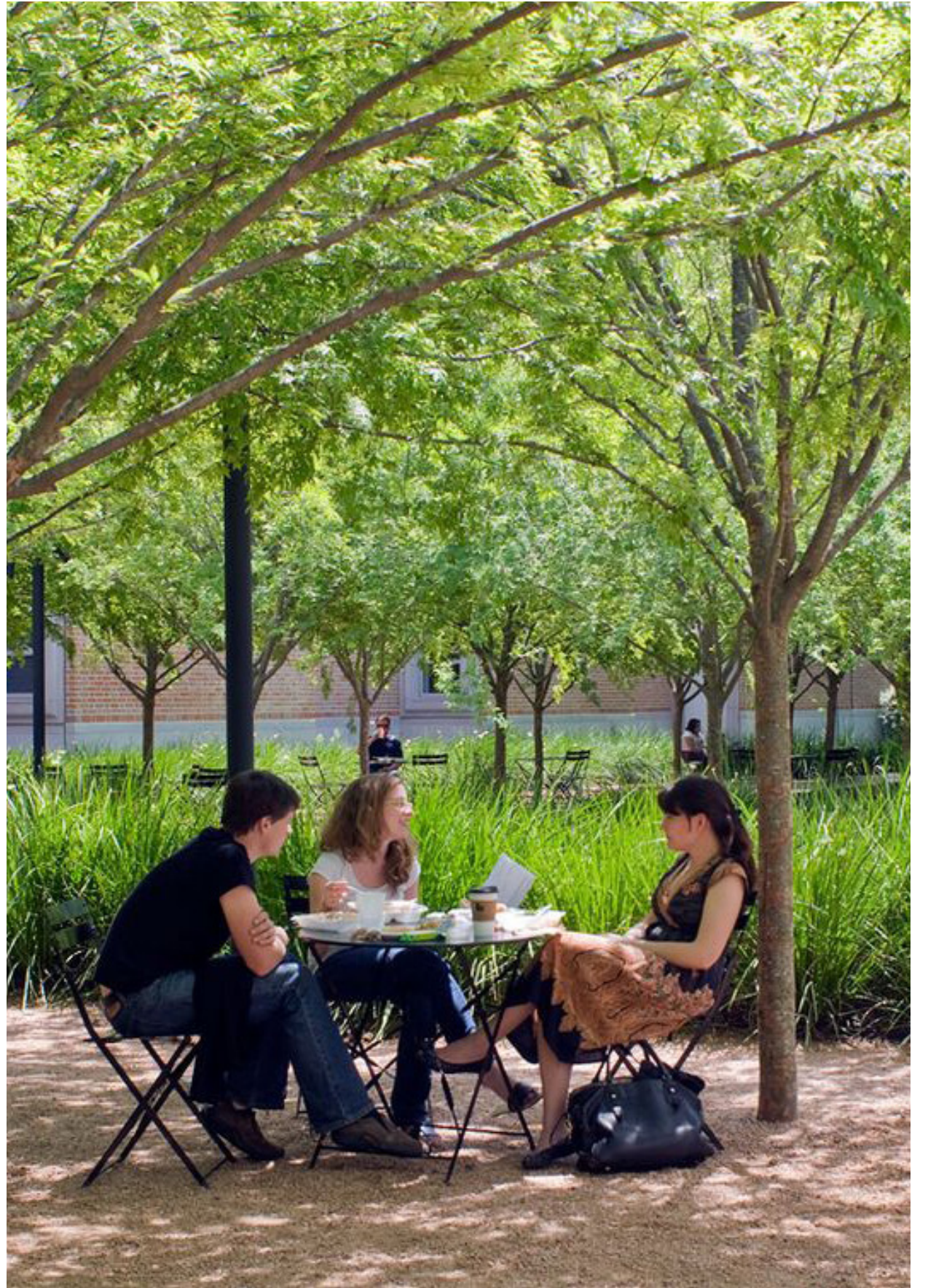
--- Property Line



BETHESDA MARKET PARK NORTH - AMENITIES



INSPIRATION IMAGES - SOCIAL GARDENS



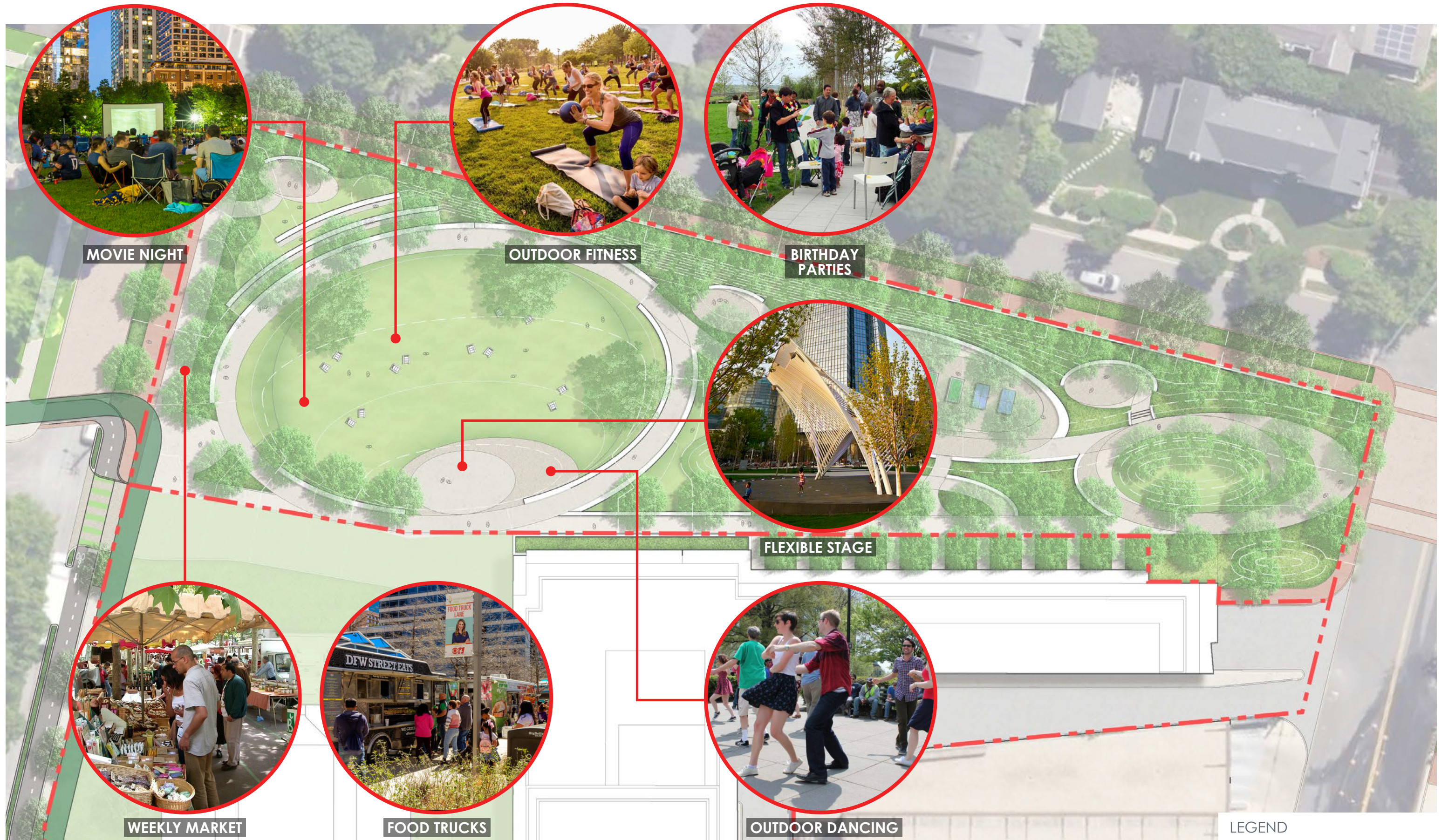
INSPIRATION IMAGES - LUNCH BREAK



INSPIRATION IMAGES - GARDENS



BETHESDA MARKET PARK NORTH
PROGRAMMING OPPORTUNITIES



MOVIE NIGHT

OUTDOOR FITNESS

BIRTHDAY PARTIES

FLEXIBLE STAGE

WEEKLY MARKET

FOOD TRUCKS

OUTDOOR DANCING

LEGEND

--- Property Line



BETHESDA MARKET PARK NORTH - PROGRAMMING OPPORTUNITIES



CHESS TOURNAMENTS



BOOK FAIR



GAMING COMPETITIONS



POP-UP LIBRARY



FLEXIBLE GATHERINGS



POP-UP PERFORMANCE



MOVEABLE FEASTS

LEGEND
- - - - - Property Line



BETHESDA MARKET PARK NORTH - PROGRAMMING OPPORTUNITIES



BETHESDA MARKET PARK SOUTH
AMENITIES



46TH STREET

ENTRY PLAZA

MULTIGENERATIONAL ACTIVE ZONE

LARGE DOG PARK

SMALL DOG PARK

LELAND STREET

WALSH STREET

LEGEND

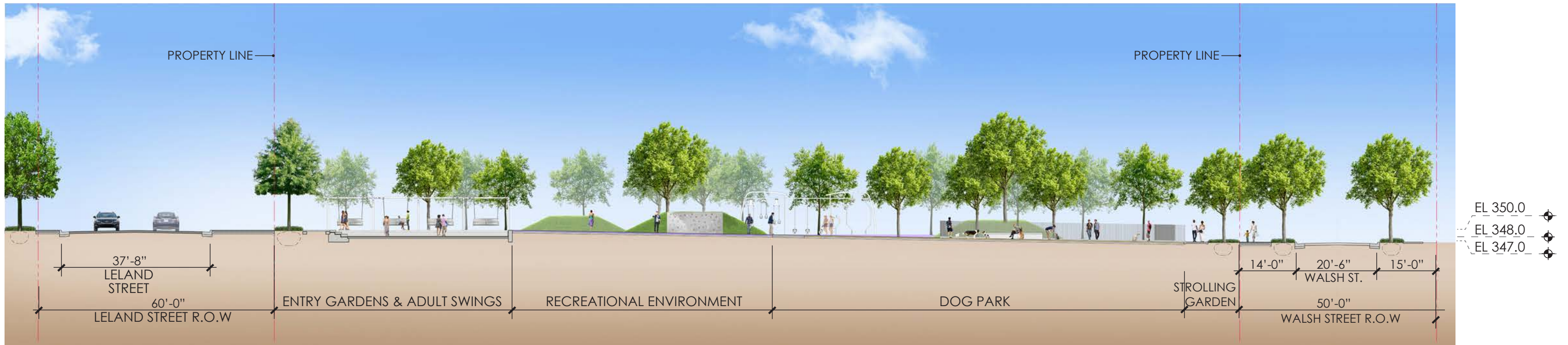
--- Property Line



BETHESDA MARKET PARK SOUTH - ENLARGEMENT PLAN



KEY PLAN



BETHESDA MARKET PARK NORTH - SECTION THROUGH MULTIGENERATIONAL ACTIVE AREA



ADULT SWINGS

OUTDOOR FITNESS

OUTDOOR FITNESS

CLIMBING MOUNDS

STROLLING PATH

DOG PARKS

LEGEND
 - - - - - Property Line



BETHESDA MARKET PARK SOUTH - AMENITIES



BETHESDA MARKET PARK SOUTH

TOTAL: 9,954 SF

SMALL DOG PARK:

4,702 SF

LARGE DOG PARK:

5,252 SF



TOMPKINS SQ PARK

7,000 SF



SWAMPDOODLE

5,000 SF



LEVY PARK

7,977 SF



MCCARREN PARK

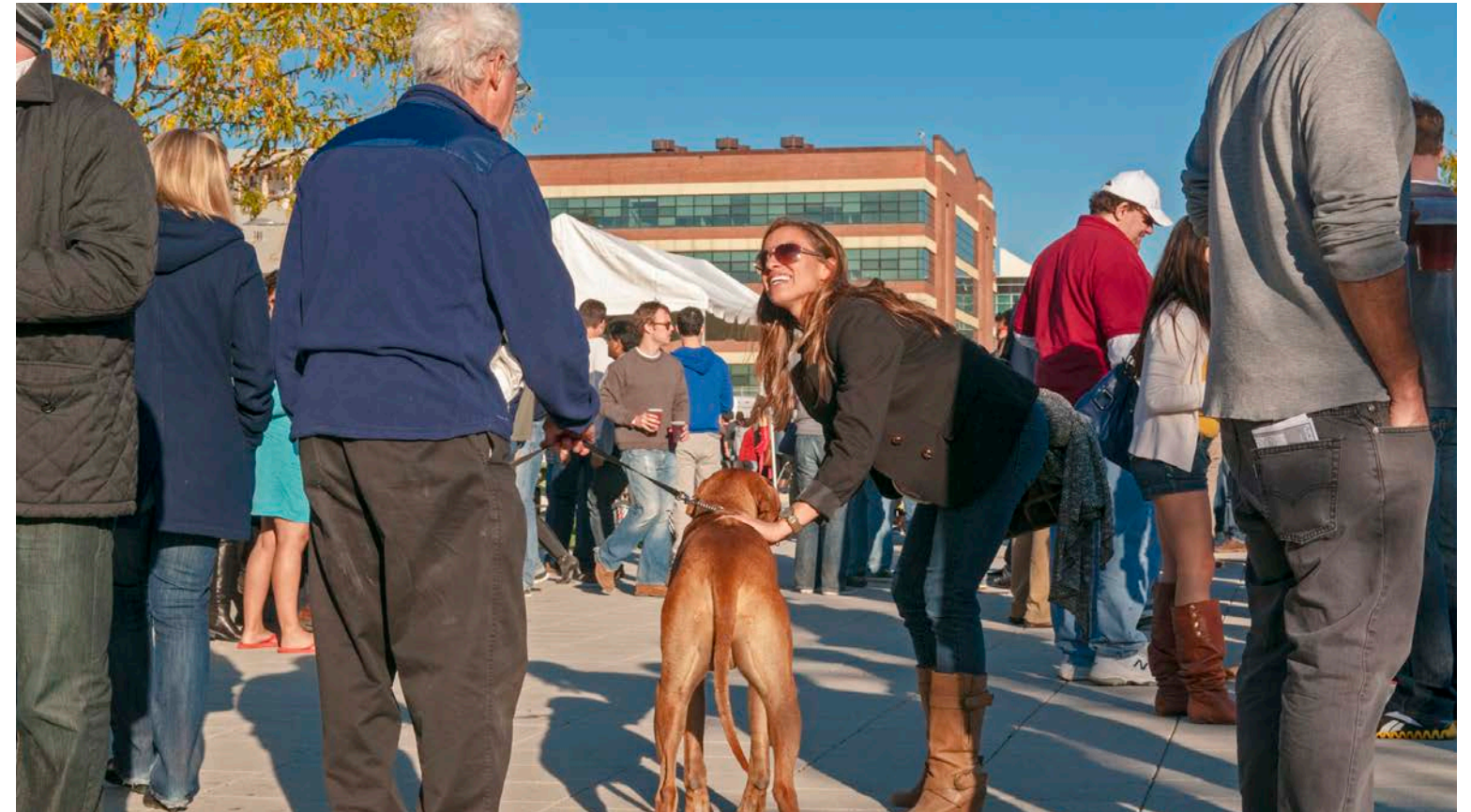
6,975 SF



MADISON SQUARE PARK

11,842 SF

COMPARABLE SPACES - DOG PARKS



INSPIRATION IMAGES - A PLACE FOR ALL AGES TO MEET AND SOCIALIZE



INSPIRATION IMAGES - OUTDOOR FITNESS



INSPIRATION IMAGES - DOG PARKS



BETHESDA MARKET PARK SOUTH **PROGRAMMING OPPORTUNITIES**



PROGRAM OCCUPANCY

5,069 SF (SMALL DOG PARK)+ 4,016 SF (LARGE DOG PARK) = 9,085 SF

Net Paved Area:

3,508 SF (SMALL DOG PARK)+ 3,952 SF (LARGE DOG PARK) = 7,460 SF

7 SF per person (Standing) = 1,060 People

10 SF per person (Standing) = 750 People



12 Qty 10' X 10' Tents



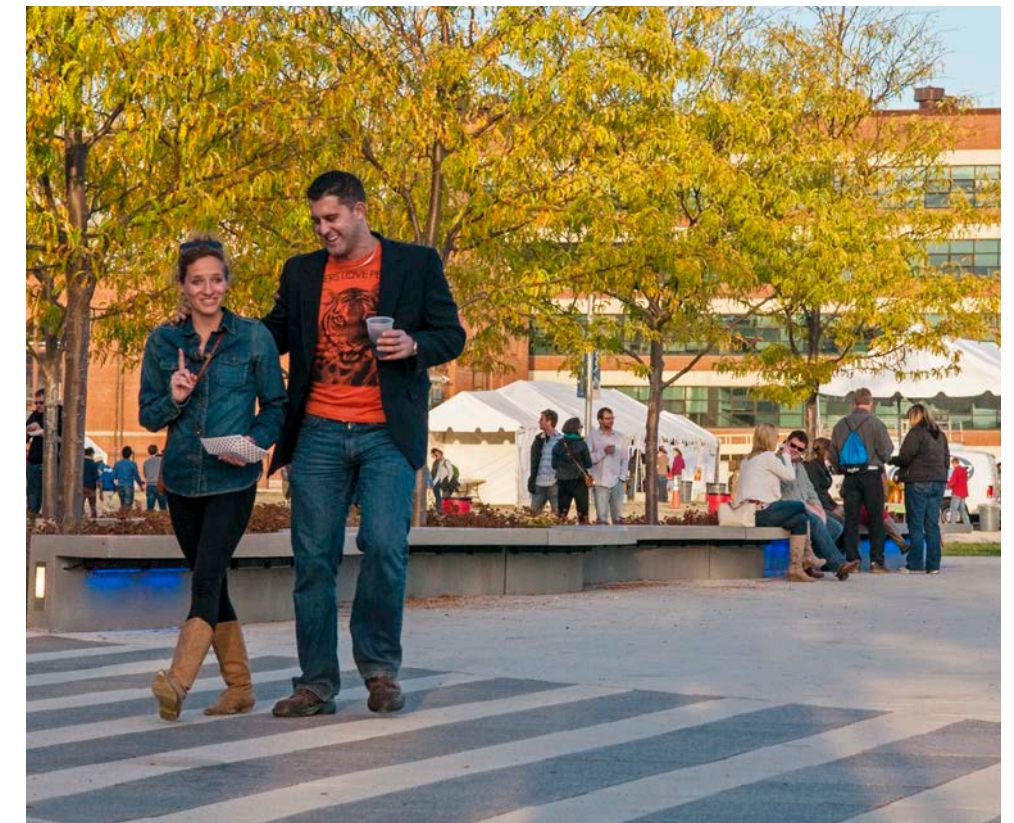
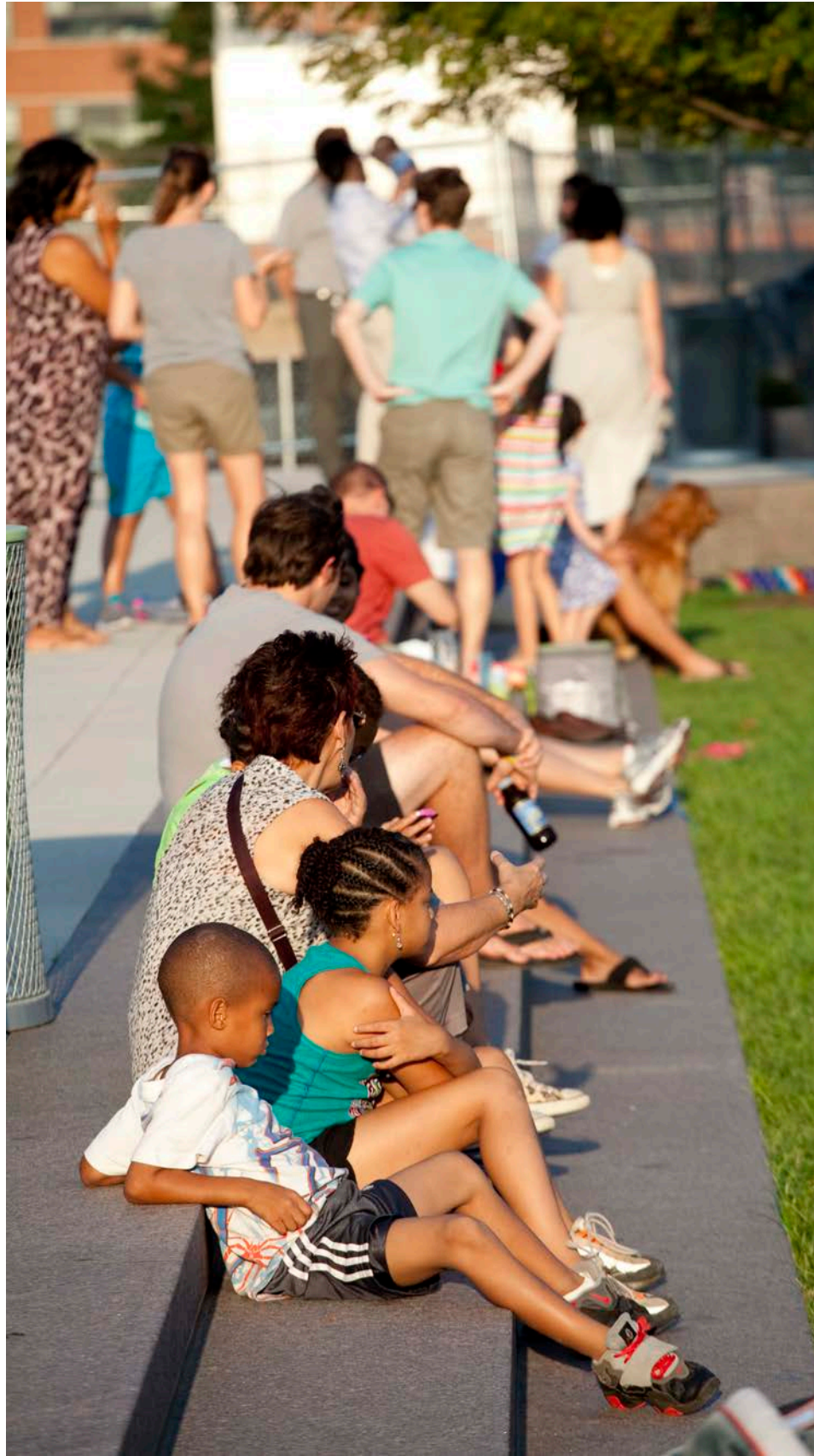
BETHESDA MARKET PARK SOUTH - SPECIAL EVENT: YAPPY HOUR

FINAL THOUGHTS





INSPIRATION IMAGES - A PLACE FOR LEISURE AND CULTURE



INSPIRATION IMAGES - A PLACE TO MEET



INSPIRATION IMAGES - VERSATILE SPACES: A SPACE FOR EVERYONE

NEXT STEPS IN THE DEVELOPMENT OF YOUR PARK

- Collect, Synthesize and Present Community Feedback
- Develop Program Options in Response to Collective Feedback

- Visit the **Project Website: MoCoParks.org/BethesdaMP**

- Attend the next **Community Meeting** which will be virtual and held on **May 24th at 7pm**
 - Check project website for the Zoom Link

- Take the survey and provide your comments regarding the new Parks! The survey will be online from **March 15-April 15**.
 - Link to the **Virtual Town Hall Survey** can be found on the project website or at MoCoParks.org/BMPSurvey

- **Questions:**
 - Contact Linda Komes via email: linda.komes@montgomeryparks.org