

# LONG BRANCH TRAIL

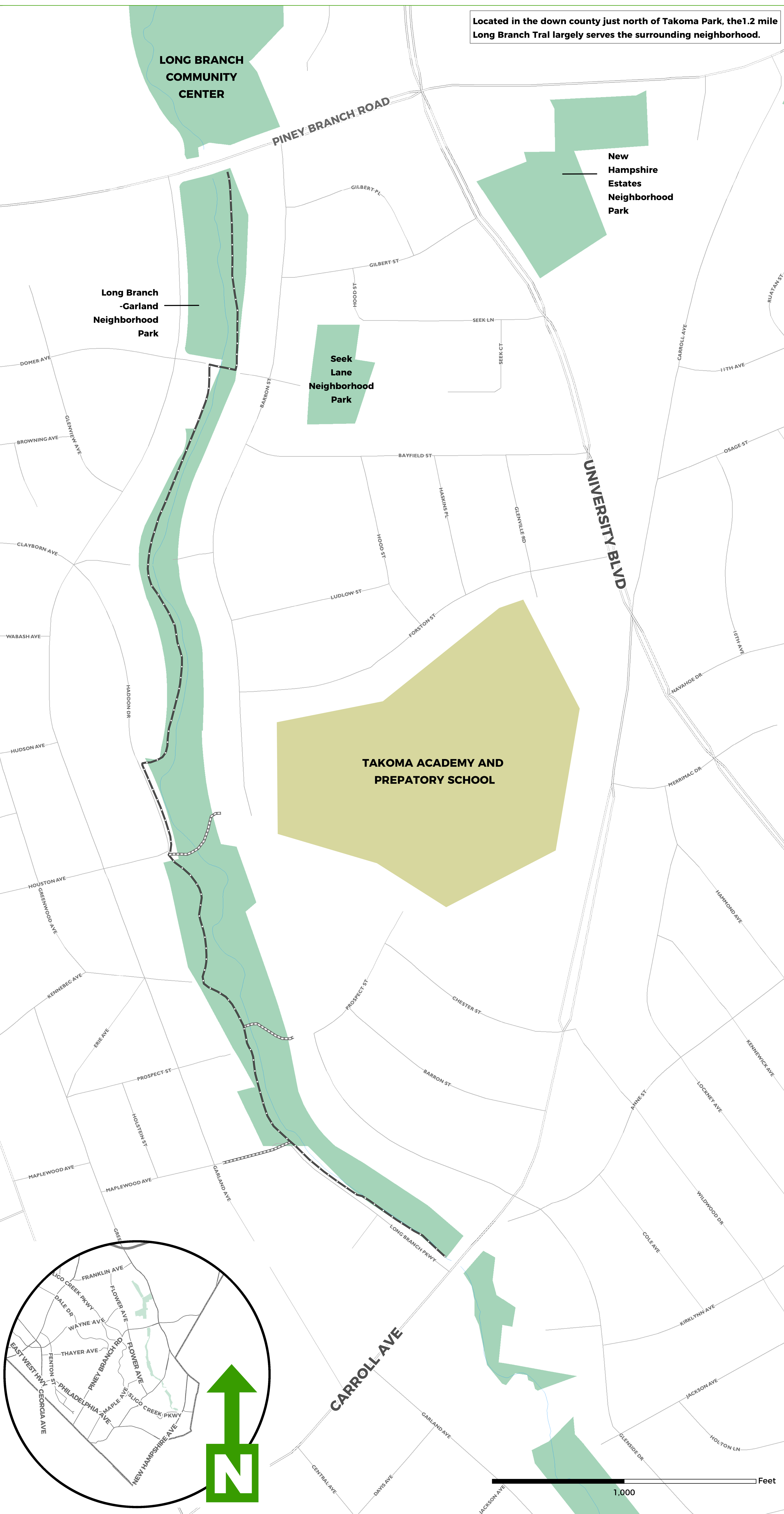
Located in the down county just north of Takoma Park, the 1.2 mile Long Branch Trail largely serves the surrounding neighborhood.

## PLEASE

- Stay on marked trails and do not blaze new trails. Trails not shown on the map are not sanctioned or maintained.
- Avoid using trails during extremely wet or soggy conditions.
- Use restrictions do apply. Observe and obey access signs.
- Be courteous to other users. Yield right of way as follows: Mountain bikers to all users; hikers to equestrians.

## PARK RULES

- Park closes at dusk unless otherwise notified.
- Pets must be kept on a leash at all times.
- Alcoholic beverages are not permitted in the park.
- Smoking is prohibited.
- Visitors to the park must follow all M-NCPPC Rules and Regulations, as well as any rules specific to a park facility or activity.
- For all the park rules, visit: [montgomeryparks/rules-and-regulations](http://montgomeryparks/rules-and-regulations)



**LONG BRANCH TRAIL** .92 mi



### LONG BRANCH TRAIL

- PAVED TRAIL
- PAVED CONNECTOR

- WATER AREAS
- MONTGOMERY PARKS



Questions? Concerns?  
 Call us: 301-495-2595  
 E-mail us: [Info@MontgomeryParks.org](mailto:Info@MontgomeryParks.org)  
 Park Police: 301-949-3010/ 8010 (non-emergency)

Submit your question or concern online:  
[MontgomeryParks.org/Customer](http://MontgomeryParks.org/Customer)

**MontgomeryParks.org**